

TM 5-4310-281-15

DEPARTMENT OF THE ARMY TECHNICAL MANUAL

OPERATOR, ORGANIZATIONAL, DIRECT SUPPORT,
GENERAL SUPPORT, AND DEPOT MAINTENANCE MANUAL
INCLUDING REPAIR PARTS AND SPECIAL TOOLS LIST

COMPRESSOR, RECIPROCATING, AIR, RECEIVER
MOUNTED ELECTRIC MOTOR DRIVEN, 5 CFM, 175 PSI
(CHAMPION PNEUMATIC MODEL 60CAW20HM-1)

FSN 4310-930-7147

(CHAMPION PNEUMATIC MODEL 60CAW20HM-2)

FSN 4310-832-9868



HEADQUARTERS, DEPARTMENT OF THE ARMY
JULY 1968

SAFETY PRECAUTIONS

BEFORE OPERATION

Do not attempt fabrication of any air line.

Remove all tools, parts, and other items from the compressor.

Check all fittings, gages and connections for proper installation.

Improperly installed items may become missiles when extreme pressure is applied.

DURING OPERATION

Never direct the stream of compressed air at personnel. High pressure air may cause serious bodily injury.

Never attempt to service any of the air compressor components until the unit has been relieved of all air pressure.

AFTER OPERATION

Never attempt to service any of the air compressor components until the unit has been relieved of all air pressure.

CHANGE

NO. 4

HEADQUARTERS
DEPARTMENT OF THE ARMY
WASHINGTON D. C., 15 July 1993

Operator, Organizational, Direct Support
General Support and Depot Maintenance Manual
Including Repair Parts and Special Tools List

**COMPRESSOR, RECIPROCATING, AIR, RECEIVER
MOUNTED, ELECTRIC MOTOR DRIVEN, 5CFM, 175 PSI
(CHAMPON PNEUMATIC MODEL 60CAW20HM-1)
NSN 4310-00-930-7147
(CHAMPON PNEUMATIC MODEL 60CAW20HM-2)
NSN 4310-00-832-9868**

DISTRIBUTION STATEMENT A: Approved for public release; distribution is unlimited

TM 5-4310-281-15, 3 July 1968 is changed as follows:

Page 1, paragraph 1-1 change second sentence address to read: Your letter or DA Form 2028 (Recommended Changes to Publications and Blank Forms) should be mailed direct to Commander, US Army Aviation and Troop Command, ATTN: AMSAT-I-MP, 4300 Goodfellow Blvd., St. Louis, MO 63120-1798.

Page 46, last item, gage, pressure, dial: 1/4, 0 to 300 pound:

Change NSN, Cage and P/N to
FSN 6685-00-425-2373
Ref. No. 050755
Mfr. Code (61349)

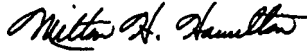
Page 63, last item, gage, pressure, dial, change same as page 46.

Page 88, Section VII. Index, change M519C reference no. 11568 mfg. code for index no. 00120 to read ref. no.050755, mfg. code 61349.

Page 90, Section VII. Index change stock number 6685-264-3961 for index no. 00120 to read 6685-425-2373.

By Order of the Secretary of the Army:

Official:



MILTON H. HAMILTON
*Administrative Assistant to the
Secretary of the Army*
0 4 6 0 9

GORDON R. SULLIVAN
*General, United States Army
Chief of Staff*

DISTRIBUTION:

To be distributed in accordance with DA Form 12-25-E, block no. 3914, requirements for TM 5-4310-281-15.

Changes in force: C2 and C3

*TM 5-4310-281-15
C3

CHANGE }
No. 3 }

HEADQUARTERS
DEPARTMENT OF THE ARMY
WASHINGTON, D. C., 5 February 1979

**Operator, Organizational, Direct Support
General Support and Depot Maintenance Manual
Including Repair Parts and Special Tools List**

**COMPRESSOR, RECIPROCATING, AIR, RECEIVER
MOUNTED, ELECTRIC MOTOR DRIVEN, 5CFM, 175 PSI
(CHAMPON PNEUMATIC MODEL 60CAW20HM-1)
NSN 4310-00-930-7147
(CHAMPON PNEUMATIC MODEL 60CAW20HM-2)
NSN 4310-00-832-9868**

TM 5-4310-281-15, 3 July 1968 is changed as follows.

The title is changed as shown above.

Page 1, paragraph 1-2.1 is added.

2.1. Forms and Records. Hand receipts for the End Item/Components of End Item (COEI), Basic Issue Items (BI), and Additional Authorized List (AAL) items are Published in a Hand Receipt Manual. The Hand Receipt Manual numerical designation is the same as the related Technical Manual with letters HR added to the number. These manuals are published to aid in property accountability and are available through: Commander, U. S. Army Adjutant General Publication Center, ATTN: AGDL-OD, 1655 Woodson Road, St. Louis, MO 63114.

Page 13. Appendix A, Basic Issue Items List is superseded as follows:

*This change supersedes C1, 24 May 1973.

APPENDIX A

COMPONENTS OF END ITEMS LIST SECTION I. INTRODUCTION

1. SCOPE.

This appendix lists Integral Components of and Basic Issue Items (BII) for the Air Compressor to help you inventory items required for safe and efficient operation.

2. GENERAL.

The components of end item list are divided into the following sections:

a. Section II. Intergral Components of the End Item. These items, when assembled, comprise the Air Compressor and must accompany it whenever it is transferred or turned in. These illustrations will help you identify these items.

b. Section III. Basic Issue Items. These are minimum essential items required to place the Air Compressor in operation, to operate it and to perform emergency repairs. Although shipped separately packed, they must accompany the Air Compressor during operation and whenever it is transferred between accountable officers. The illustrations will assist you with hard-to-identify items. This manual is your authority to requisition replacement BII based on Table(s) of Organization and Equipment (TOE)/Modification Table of Organization and Equipment (MTOE) authorization of the end item.

3. EXPLANATION OF COLUMNS.

a. Illustration: This column is divided as follows:

(1) *Figure Number.* Indicates the figure number of the illustration on which the item is shown (if applicable).

(2) *Item Number.* The number used to identify item called out in the illustration.

b. National Stock Number (NSN): Indicates the national stock number assigned to the end item which will be used for requisitioning.

c. Part Number (P/N): Indicates the primary number used by the manufacturer which controls the design and characteristics of the item by means of its engineering drawings, specifications, standards and inspection requirements to identify an item or range of items.

d. Description: Indicates the federal item name and, if required, a minimum description to identify the item.

e. Location: The physical location of each item listed is given in this column. The lists are designed to inventory all items in one area of the major item before moving on to an adjacent area.

f. Usable on Code: Usable on codes are included to help you identify which component items are used on the different models. Identification of the codes used in this list are:

CODE	USED ON
A	Champion Compressor, Model 60CAW20HM-1
B	Champion Compressor, Model 60CAW20HM-2

g. Quantity Required (Qty Read): This column lists the quantity of each item required for a complete major item.

h. Quantity: This column is left blank for use during inventory. Under the received column, list the quantity you actually receive on your major item. The date columns are for use when you inventory the major item at a later date, such as for shipment to another site.

**Section II.
INTEGRAL COMPONENTS OF END ITEM**

(1) ILLUSTRATION (a) (b) FIGURE ITEM NO. NO.		(2) NATIONAL STOCK NUMBER	(3) PART NO. & FSCM	(4) DESCRIPTION	(5) LOCATION	(6) USABLE ON CODE	(7) QTY REQD
1		4910-00-030-2365		INFLATOR ASSEMBLY	On end of air hose	A B	1
1		4720-00-874-3179		HOSE ASSEMBLY	On end of air tank	A B	1

**Section III.
BASIC ISSUE ITEMS**

(1) ILLUSTRATION (a) (b) FIGURE ITEM NO. NO.		(2) NATIONAL STOCK NUMBER	(3) PART NO. & FSCM	(4) DESCRIPTION	(5) LOCATION	(6) USABLE ON CODE	(7) QTY REQD
				DA Technical Manual		A	1
				TM 5-4310-281-15		B	1

Appendix A.1 is added as follows:

**APPENDIX A. 1
ADDITIONAL AUTHORIZATION LIST
SECTION I. INTRODUCTION**

1. SCOPE.

This appendix lists additional items you are authorized for the support of the Air Compressor.

2. GENERAL.

This list identifies items that do not have to accompany the Air Compressor and that do not have to be turned in with it. These items are authorized to you by CTA, MTOE, TDA or JTA.

3. EXPLANATION OF LISTING.

National stock number, descriptions and quantities are provided to help you identify and request the additional items you require to support this equipment. "USABLE ON" codes are identified as follows:

CODE	USED ON
A	Champion Compressor, Model 60CAW20HM-1
B	Champion Compressor, Model 60CAW20HM-2

Section II.
ADDITIONAL AUTHORIZATION LIST

(1) NATIONAL STOCK NUMBER	(2) DESCRIPTION	(3)	(4)
	PART NUMBER & FSCM	USABLE ON CODE	QTY AUTH
4210-00-555-8837	EXTINGUISHER, FIRE	A B	EA 1

Page 47. Line item 00124, column 1 is changed as follows: "POR", add to column 2 "4310-00-462-7487", add to column 7a through d "* * * *" respectively.

Page 64. Line item 00124, column 1 is changed as follows: "POR", add to column 2 "4310-00-462-7487", add to column 7a through c "* * *" respectively, add to column 8a through c "* * *" respectively, add to column 9 "3".

By Order of the Secretary of the Army:

Official:

J. C. PENNINGTON
Major General, United States Army
The Adjutant General

BERNARD W. ROGERS
General, United States Army
Chief of Staff

Distribution:

To be distributed in accordance with DA Form 12-25A, Operator maintenance requirements for Air Compressors: 5 CFM.

TM 5-4310-281-15
C 2

CHANGE }
No. 2 }

HEADQUARTERS
DEPARTMENT OF THE ARMY
WASHINGTON, DC 30 September, 1974

**Operator, Organizational, Direct and General Support,
and Depot Maintenance Manual (Including
Repair Parts and Special Tools Lists)**

**COMPRESSOR, RECIPROCATING, AIR; POWER DRIVEN;
RECEIVER MOUNTED; AC, 115-230V, 60 HZ, 1-PHASE;
5 CFM, 175 PSI (CHAMPION PNEUMATIC MODELS)
(60 CAW 20 HM-1) FSN 4310-930-7147
(60 CAW 20 HM-2) FSN 4310-832-9868**

TM 5-4310-281-15, 3 July 1968 is changed as follows:

Reverse of Cover Page. Add to Safety Precautions:

WARNING

This compressor is NOT SUITABLE for the supply of air for charging cylinders with BREATHABLE AIR.

WARNING

Cleaning solvent, PD-680, is POTENTIALLY DANGEROUS CHEMICAL. Do not use near open flame.

Page 1, paragraph 1.1 is added.

1-1. Recommendation for Maintenance Publications Improvements. You can help to improve this manual by calling attention to errors and by recommending improvements. Your letter or DA Form 2028 (Recommended Changes to Publications and Blank Forms) should be mailed direct to Commander, US Army Troop Support Command, ATTN: AMSTS MPP, 4300 Goodfellow Boulevard, St. Louis, MO 63120-1717. A reply will be furnished direct to you. *Aviation and Troop Command, ATTN: AMSAT-I-m*
Page 3, paragraph 7, add:

WARNING

This compressor is NOT SUITABLE for the supply of air for charging cylinders with BREATHABLE AIR.

Page 4, paragraph 22, add:

WARNING

Dry cleaning solvent, PD-680, used for cleaning is POTENTIALLY DANGEROUS CHEMICAL. Do not use near open flame. Flash point of solvent is 100-138°F. (38-59°C.).

By Order of the Secretary of the Army:

FRED C. WEYAND
General, United States Army
Vice Chief of Staff

Official:

VERNE L. BOWERS

Major General, United States Army

The Adjutant General

Distribution:

To be distributed in accordance with DA Form 12-25A (qty rqr block No. 6), Organizational maintenance requirements for Air Compressors, 5 CFM.

☆ U.S. GOVERNMENT PRINTING OFFICE: 1974-665134/165

TECHNICAL MANUAL

HEADQUARTERS

DEPARTMENT OF THE ARMY

No. 5-4310-281-15

WASHINGTON, D. C., 3 July 1968

Operator, Organizational, Direct Support,
 General Support, and Depot Maintenance Manual
 Including Repair Parts and Special Tools List

Compressor, Reciprocating, Air, Receiver Mounted
 Electric Motor Driven, 5 CFM, 175 PSI,
 (Champion Pneumatic Model 60CAW20HM-1)
 FSN 4310-930-7147
 (Champion Pneumatic Model 60CAW20HM-2)
 FSN 4310-832-9868

	Page No.
General Description -----	1
Installation -----	2
Location and Mounting-----	2
Heat Coil Selection-----	2
Electrical Connections -----	2
Preparation for Use-----	3
Operation -----	3
Preventive Maintenance -----	3
Lubrication -----	4
Repair and Replacement-----	4
Special Tools-----	4
Disassembly-----	4
Belt Guard Assembly-----	4
V Belts-----	4
Pressure Switch Assmbly -----	4
Magnetic Motor Starter-----	4
Valve Assemblies-----	4
Crankshaft-----	4
Bearing Assemblies-----	4
Piston Connecting Rods-----	4
Oil Seal -----	4
Cleaning-----	4
Inspection-----	4
Repair-----	4
Reassmbly -----	4
Pressure Switch Assmbly-----	4
Magnetic Motor Starter-----	4
Valve Assemblies-----	5
Crankcase Hand Hole Plate-----	5
Crankshaft Bearing Assemblies-----	5
Piston Connecting Rods -----	5
Piston Rings-----	5
Test Procedure -----	5
Adjustment -----	5
Trouble Shooting-----	5
APPENDIX A. BASIC ISSUE ITEMS LIST -----	13
B. MAINTENANCE ALLOCATION CHART -----	18
C. REPAIR PARTS AND SPECIAL TOOLS LIST -----	30

1. GENERAL DESCRIPTION

The 60CAW20HM-1,-2 (fig. 1) is a three cylinder, reciprocating type air compressor capable of delivering 5 cubic feet per minute. The compressor assembly and associated electric motor are mounted on a frame which is welded to the air receiver, a 60 gallon steel tank. The electric motor drives the compressor assembly by means of a matched pair of V belts.

The pressure switch assembly determines cut-in and cut-out pressure for the compressor assembly. The switch can be adjusted for cut-out pressures over the range of 140 to 175 psi. The switch can also be adjusted for a 35 psi to 65 psi differential between cut-in and cut-out pressure. The safety valve assembly releases when air receiver pressure exceeds 200 psi.

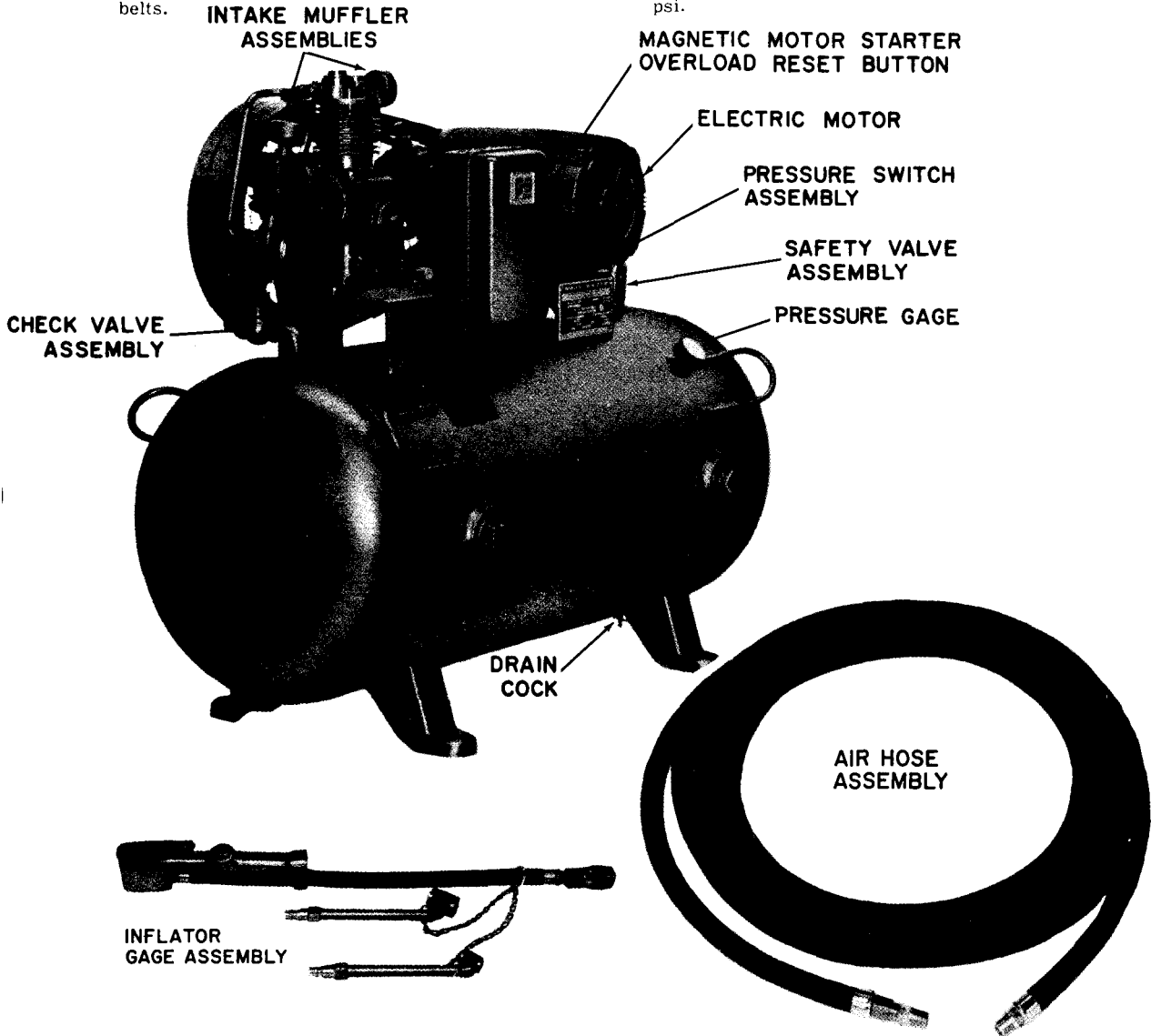


Figure 1. 60CAW20HM-1,-2) Air Compressor

Table 1. Tabulated Data (For Model 60CAW20HM-1)

Bore and Stroke	2-5/8 x 2 first stage (2 cyl); 1-3/4 x 2 second stage
CU. FT/REV	0.01252
Air Receiver Working Pressure	200 psi at -25° to +450°F
Displacement	9.3 CFM
Delivery65 CFM
Crankcase capacity	1 pint
Shipping weight	282 lbs
Overall Dimensions	39" x 22" x 52"
Power Requirements	208-220 or 416-440 volts, 60 cps, 3 phase

2. INSTALLATION

3. LOCATION AND MOUNTING

Installation should be accomplished on a solid, level base, preferably concrete, with at least 14 inches clearance at the belt guard assembly. Figure 2 shows drilling dimensions for bolting or lagging down through bolt holes in the base feet. Shims should be used where the base is uneven. Base feet should never be pulled down to the base as this results in abnormal vibration.

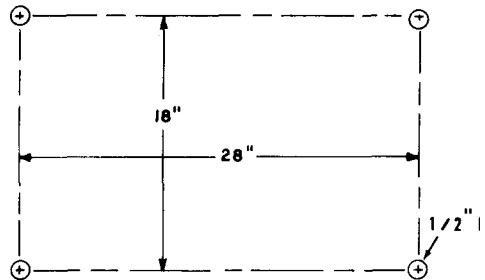


Figure 2. Drilling Dimensions for Mounting

4. HEAT COIL SELECTION (See figure 3)

The magnetic motor starter contains two pairs of overload heat coils. One pair is for 208-220 volt service and the other pair is for 416-440 volt service. Install the correct heat coils on the two thermal overloads (5 & 8, fig. 6). Secure the remaining pair of heat coils inside the magnetic motor starter box for possible future use.

5. ELECTRICAL CONNECTIONS

Ascertain that available electrical service is 208-220 or 416-440 volts, 60 cps, 3 phase. Shut off electrical service and make wiring connections shown in figure 4. Be sure that V, M, and W terminal wiring corresponds to available voltage.

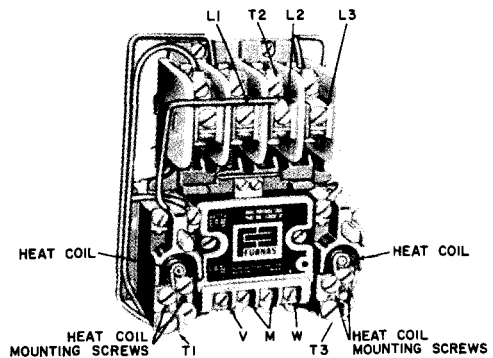


Figure 3. Magnetic Motor Starter

CAUTION

Do not allow electrical service to be turned on until crankcase has been filled with oil.

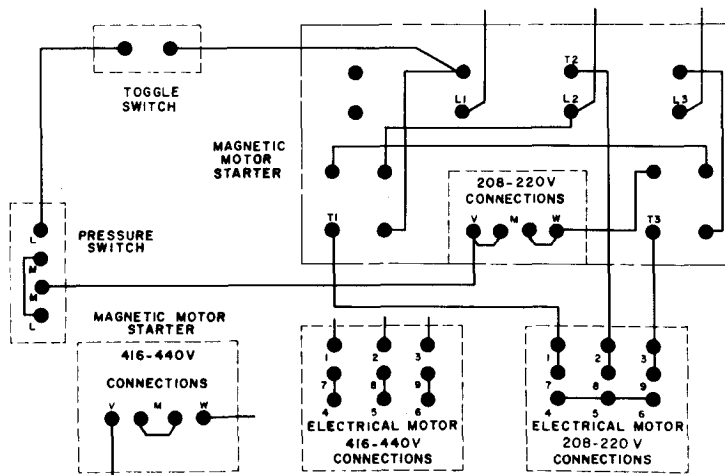


Figure 4. Electrical Wiring

Table 1. Tabulated Data (For Model 60CAW20HM-2)

Bore and Stroke	2-5/8 x 2 first stage (2 cyl); 1-3/4 x 2 second stage
CU FT/REV	0.01252
Air Receiver Working Pressure	200 psi at -25° to +450°F
Displacement	..9.3 CFM
Delivery	..6.5 CFM
Crankcase capacity	1 pint
Shipping weight	282 lbs
Overall Dimensions	39" x 22" x 52"
Power Requirements	115 or 230 volts, 60 cps, single phase

2.1. INSTALLATION

3.1. LOCATION AND MOUNTING

Installation should be accomplished on a solid, level base, preferably concrete, with at least 14 inches clearance at the belt guard assembly. Figure 2.1 shows drilling dimensions for bolting or lagging down through bolt holes in the base feet. Shims should be used where the base is uneven. Base feet should never be pulled down to the base as this results in abnormal vibration.

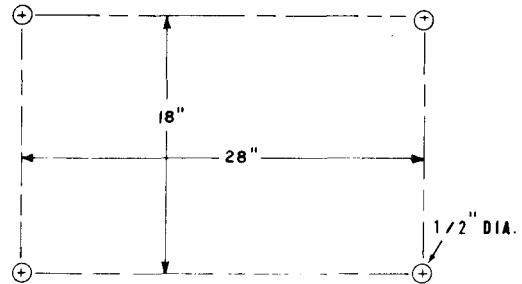


Figure 2.1 Drilling Dimensions for Mounting

4.1. HEAT COIL SELECTION (See figure 3.1)

The magnetic motor starter contains two overload heat coils. One is for 115 volt service and the other is for 230 volt service. Install the correct heat coil on the thermal overload (5, fig. 7). Secure the other heat coil inside the magnetic motor starter box for possible future use.

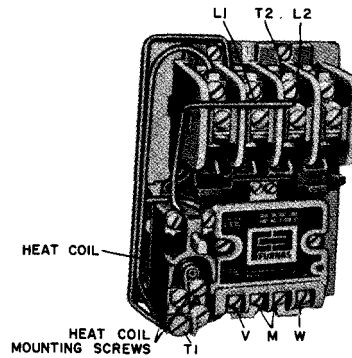


Figure 3.1 Magnetic Motor Starter

5.1. ELECTRICAL CONNECTIONS

Ascertain that available electrical service is 115 or 230 volts, 60 cps, single phase. Shut off electrical service and make wiring connections shown in figure 4.1. Be sure that V, M, and W terminal wiring corresponds to available voltage.

CAUTION

Do not allow electrical service to be turned on until crankcase has been filled with oil.

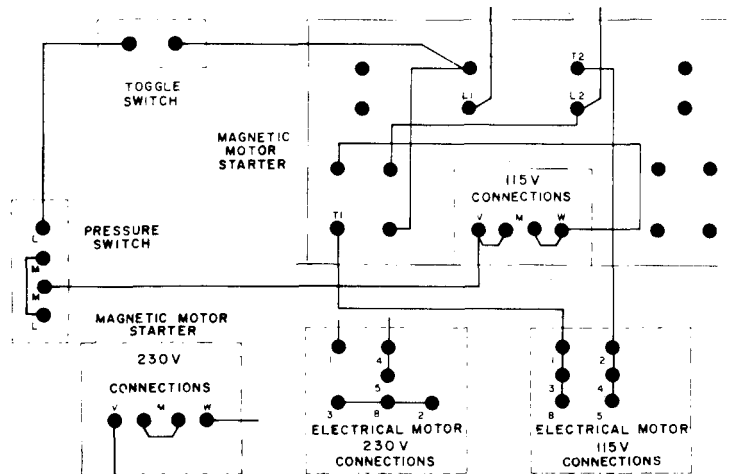


Figure 4.1 Electrical Wiring

6. PREPARATION FOR USE

If the air compressor will not be used immediately, omit steps d and e.

- a. Connect air hose assembly (**figure 1**) to globe valve (**15 fig.8**) and connect inflator gage assem. (**fig. 1**) to air hose assembly.
- b. Close globe valve assembly by rotating fully clockwise.
- c. Add oil to crankcase according to lubrication instructions (paragraph 9).
- d. Turn on electrical service and place toggle switch (**2, fig.6**) on magnetic motor starter box to on (up) position.
- e. Allow equipment to operate until operating pressure is indicated on pressure gage (**13, fig.18**), at which time the electric motor will stop. This normally takes up to 21 minutes.
- f. Place toggle switch on magnetic motor starter box to off(down) position.

7. OPERATION

- a. To start up air compressor, proceed as follows :

1. Place toggle switch (**2, fig.6**) on magnetic motor starter box to on (up) position. Unless operating pressure is already indicated on pressure gage, equipment may operate for up to 21 minutes to build up pressure.

2. When operating pressure is reached, open globe valve assembly by rotating fully counterclockwise.

- b. To shut down air compressor for a prolonged period, proceed as follows:

1. Place toggle switch on magnetic motor starter box to off (down) position.

2. Disconnect air hose assembly and allow compressed air to bleed off.

3. Close globe valve assembly by rotating fully clockwise.

8. PREVENTIVE MAINTENANCE

The following table contains the schedule of preventive maintenance under normal operating conditions. Under high salt, sand, or dust conditions, clean overall equipment and muffler assemblies more frequently.

TABLE 2. PREVENTIVE MAINTENANCE SCHEDULE

INTERVAL	MAINTENANCE REQUIRED
Daily	<ol style="list-style-type: none"> 1. Check oil level at oil level gage (17, fig.9). If necessary, add oil (paragraph 9). 2. Drain moisture from air receiver by opening drain cock (20, fig.8). 3. Turn off air compressor at end of day's operation and close globe valve assembly.
Weekly	<ol style="list-style-type: none"> 1. Turn off air compressor. Clean dust and foreign matter from cylinder head, motor, fan blade, air lines, inter-cooler, and air receiver. Pay particular attention to baffles. 2. Turn off air compressor. Remove muffler assemblies and clean them with gasoline or any commercial solvent other than carbon tetrachloride. 3. Check V belts for tightness. Belts should be tight enough to prevent slipping. If necessary, adjust belt tension to allow approximately 3/8 inch depression (paragraph 14).
3 Months	<ol style="list-style-type: none"> 1. Change oil (paragraph 9). 2. Use soap solution and brush to check entire equipment for air leakage around fittings, connections, and gaskets. 3. Tighten all nuts and cap screws.
12 Months	<ol style="list-style-type: none"> 1. Check and clean compressor valves (paragraphs 17 and 28). Replace springs, discs, and seats when worn or damaged.

9. LUBRICATION

At installation and when changing oil, the crankcase should be filled with a good grade of unused, clean motor oil (See LO 5-4310-281-12).

Oil is drained by removing cap plug (27, fig. 9) from pipe. Oil is added by removing fill plug(39) and filling opening to overflow.

The electric motor is equipped with sealed-for-life bearings and requires no further lubrication.

10. REPAIR AND REPLACEMENT

11. SPECIAL TOOLS

None.

12. DISASSEMBLY (figs. 8 thru 10).

The general disassembly procedure can be determined by referring to the exploded view illustrations (figs. 8 thru 10). Exceptions and peculiarities are described in paragraphs 13 through 21).

NOTE

The equipment should be disassembled only to the point where required repair or replacement can be made.

13. BELT GUARD ASSEMBLY. The top bracket of the belt guard assembly is secured with the capscrew (19, fig.10) for the high pressure cylinder head.

14. V BELTS. To remove V belts, loosen screws (5, fig. 8) and slide electric motor to reduce V belt tension.

15. PRESSURE SWITCH ASSEMBLY. The pressure switch assembly should not be disassembled. Replace it as a unit.

16. MAGNETIC MOTOR STARTER. The magnetic motor starter should not be disassembled except to salvage heat coils (paragraph 4). Replace it as a unit.

17. VALVE ASSEMBLIES. (See fig. 10) When a valve assembly is removed, it should be tagged for identification of cylinder and whether it is an intake or exhaust valve. Valve assemblies should not be disassembled unless replacement of parts is necessary.

18. CRANKSHAFT. (See fig. 9) Convenience slots are provided in the crankcase for removal of the crankshaft.

19. BEARING ASSEMBLIES. (See fig. 9) Do not remove a bearing assembly unless replacement of

parts is necessary. Knock bearing assembly off with a soft hammer or other blunt instrument. Take care not to mar crankshaft. Never insert anything against inner race for removal.

20. PISTON CONNECTING RODS. (See fig. 9) Piston connecting rods are manufactured in two matching parts. When removing, tag both parts to identify crankshaft location.

21. OIL SEAL. The oil seal (See fig. 9) can be knocked out with a blunt instrument through the hand hole. A badly deteriorated oil seal can be dug out with a screwdriver.

22. CLEANING

Clean the equipment with a washing solvent. Blow or wipe dry before reassembly.

23. INSPECTION

Inspect all packing, seals, gaskets, pistons, rods, and crankshaft. Look for wear, scoring, cracks, breaks, and distortion of parts.

24. REPAIR

Replace packing, seals, and gaskets. Replace broken, cracked and distorted parts. Replace both parts of a piston connecting rod if one part is defective. Replace worn and scored parts if pressure loss is evidenced in test procedure (paragraph 33).

The pressure switch assembly uses a diaphragm to open and close a set of contacts (fig. 5). Clean contacts by using sandpaper lightly.

Valves may become fouled by carbon or other foreign matter. Disassemble valve to clean. Seat and disc may be lapped in on fine sandpaper if badly carboned. If a smooth finish cannot be obtained, replace with new parts.

Before servicing the check valve, be sure pressure is 0 psi. If disc at bottom of plunger is not clean and free of scratches, lap in on fine sandpaper, turn over to other side, or replace the part.

25. REASSEMBLY

Reassembly is essentially the reverse of disassembly. Exceptions and peculiarities are described in paragraphs 26 through 32.

26. PRESSURE SWITCH ASSEMBLY. (fig. 5) When a new pressure switch assembly is installed, it should be adjusted according to paragraph 34.

27. MAGNETIC MOTOR STARTER. (figs. 6 & 7) When a new magnetic motor starter is installed, the correct heat coils should be installed according to paragraphs 4 or 4.1.

28. VALVE ASSEMBLIES. (See fig. 10) When any valve assembly is removed, always install a new valve gasket. Be sure to replace a valve assembly in its original position.

29. CRANKCASE HAND HOLE PLATE. When hand hole plate (See fig.9) is removed for any reason, always install a new hand hole gasket (22).

30. CRANKSHAFT BEARING ASSEMBLIES. (See fig. 9) The bearing assemblies are pressed onto the crankshaft up against a shoulder. Be sure to press bearing cone and roller and bearing cup until positive stop is reached.

31. PISTON CONNECTING ROD (See fig. 9) When installing a new piston connecting rod, be sure that both parts of the new rod are used. Both parts of the old rod must be discarded.

32. PISTON RINGS. (See fig. 9) Piston rings are received in sets and upper and lower rings are identified in the sets.

33. TEST PROCEDURE

Table 3 indicates the minimum performance standards that the equipment must meet. To make the test, perform the following steps.

- a. Place toggle switch (2,fig. 6) to off (down) position.
- b. Remove air hose assembly (fig. 1) from globe valve assembly (15, fig. 8).
- c. Open globe valve assembly (ccw) until pressure gage indicates 0 psi, then close valve assembly.
- d. Reconnect air hose assembly and open globe valve assembly.
- e. Place toggle switch to on (up) position and check pumping time according to table 3. If cut-out pressure is incorrect, adjust according to paragraph 34.
- f. Operate inflator gage assembly to lower air pressure until compressor starts. If cut-in pressure is incorrect, adjust according to paragraph 34.

Table 3. Minimum Pumping Time Requirements

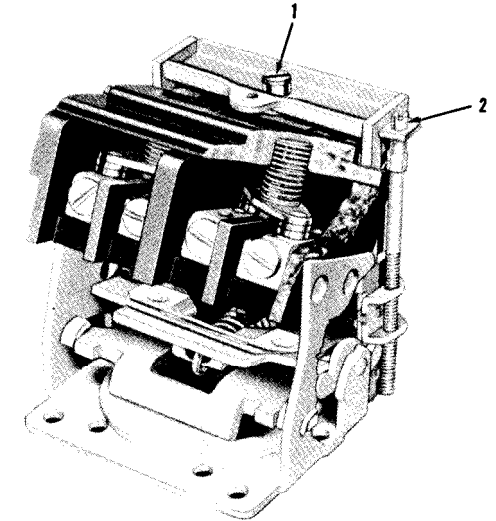
PRESSURE	PUMPING TIME
0 to 100 psi	12 minutes
0 to 125 psi	15 minutes
0 to 150 psi	18 minutes
0 to 175 psi	21 minutes

34. ADJUSTMENT

- a. To raise cut-in and cut-out pressure, turn screw (1, figure 5) on pressure switch assembly clockwise.

CAUTION

Do not turn screw (2) further that it will turn easily.



1. PRESSURE ADJUSTMENT SCREW
2. DIFFERENTIAL ADJUSTMENT SCREW

Figure 5. Pressure Switch Assembly Adjustments

- b. To lower differential (difference between cut-in and cut-out pressure), turn screw (2) counterclockwise.
- c. To increase differential and maintain same cut-out pressure, simultaneously turn screw (2) clockwise and turn screw (1) counterclockwise.

NOTE

If differential is increased by turning only screw (2) clockwise, the cut-in pressure changes only slightly and the cut-out pressure rises.

35. TROUBLESHOOTING

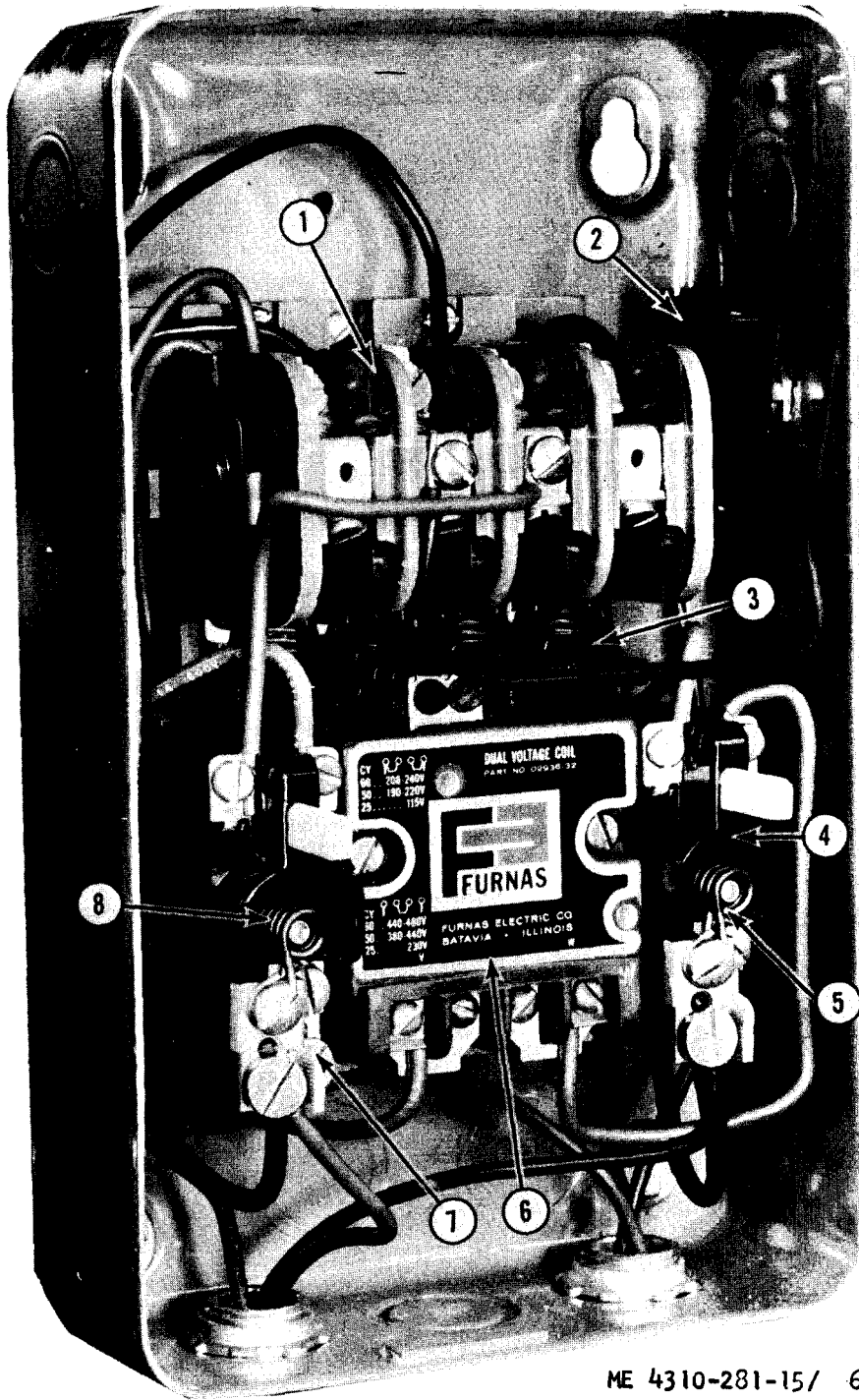
Table 4 lists troubles that may occur during installation, operation and test. One or more remedial steps are indicated for each of the troubles.

Table 4. Troubleshooting

TROUBLE	PROBABLE CAUSE	REMEDY
Motor will not start.	Electrical power to motor interrupted.	Check that wall switch (if used) is on and that associated fuses are not blown. Check that heat coils on magnetic motor starter are not broken. (See figure 3.) Check contacts and diaphragm in pressure switch assembly.
	Mechanical bind causing motor overload.	Check that electrical motor and flywheel operate freely. Depress reset pushbutton on magnetic motor starter box. (See figure 1.)
	Air flow restricted.	Badly worn compressors which are pumping oil may deposit carbon within aftercooler tube and the check valve. Clean or replace parts as necessary.
Motor is noisy or overheats.	Valves fouled.	Repair valve parts by cleaning or replacement.
	Air flow restricted.	Badly worn compressors which are pumping oil may deposit carbon within aftercooler tube and the check valve. Clean or replace parts as necessary.
Compressor runs hot.	Dirt or dust accumulation on baffles, which acts as an insulation.	Clean baffles on cylinder and tubing by blowing with air or use a wire brush.
	V belts slipping.	Tighten V belts to provide correct tension (paragraph 14).
	Intake mufflers clogged.	Clean intake mufflers.
	Oil level low.	Add oil if necessary (paragraph 9).
	Wrong flywheel rotation.	If flywheel rotates against direction shown by arrows, reverse rotation of motor by correcting motor wiring (figure 4).
	Valves fouled.	Repair valve parts by cleaning or replacement.
	Air flow restricted.	Badly worn compressors which are pumping oil may deposit carbon within aftercooler tube and the check valve. Clean or replace parts as necessary.
Compressor pumps too slowly.	Leakage in system.	Use a soap solution to check for leaks at all connections and any other suspected points. Any leakage will be evidenced by bubbles.
	Valves fouled.	Repair valve parts by cleaning or replacement.
	Air flow restricted.	Badly worn compressors which are pumping oil may deposit carbon within aftercooler tube and the check valve. Clean or replace parts as necessary.
Compressor will not shut off.	Pressure switch assembly defective.	Check contacts and diaphragm in pressure switch assembly.
Compressor runs too often.	Leakage in system.	Use a soap solution to check for leaks at all connections and any other suspected points. Any leakage will be evidenced by bubbles.

Table 4. Troubleshooting (continued)

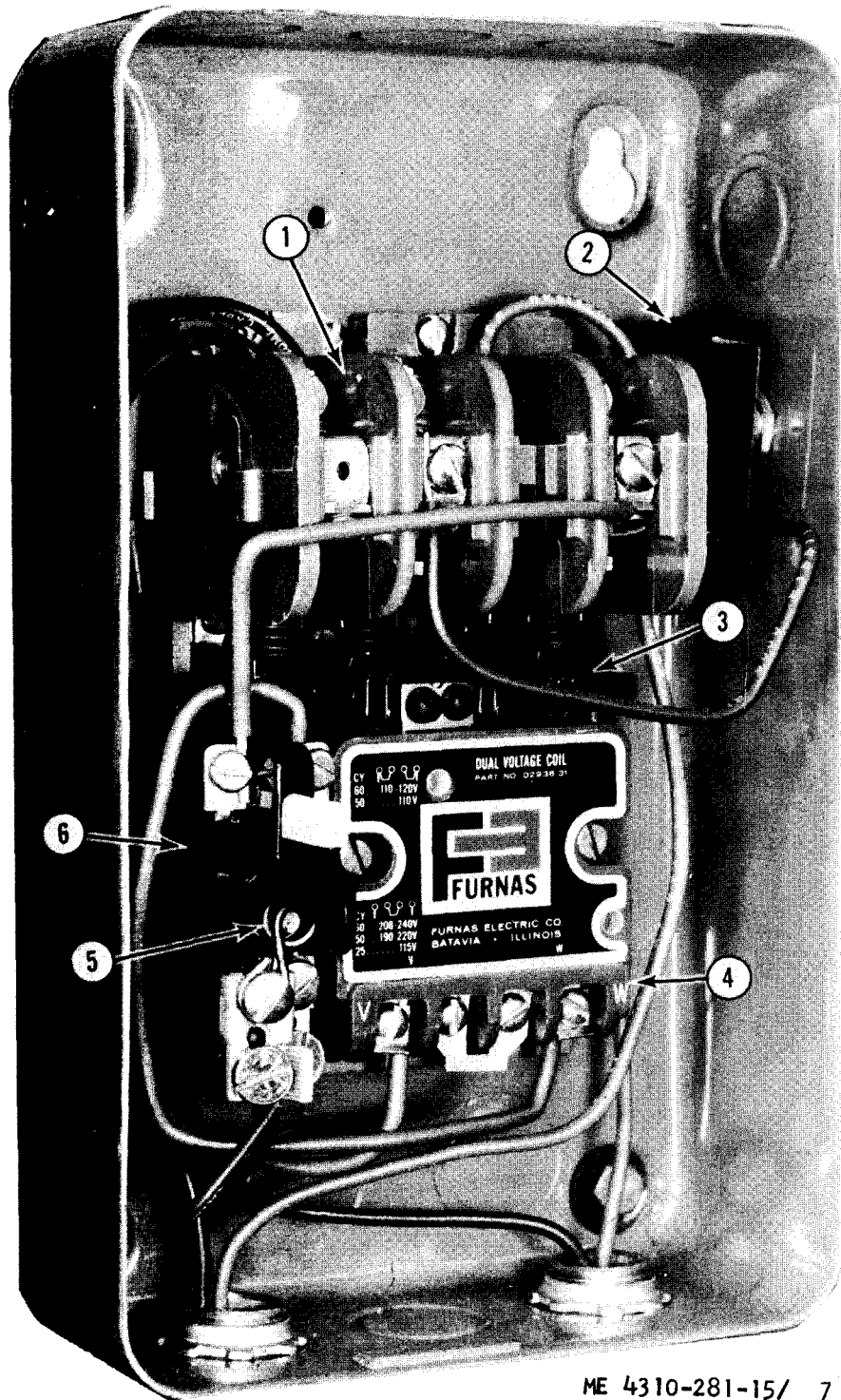
TROUBLE	PROBABLE CAUSE	REMEDY
Compressor runs too often (continued).	Pressure switch needs adjustment.	Check according to paragraph 33.
	Large accumulation of water in air receiver.	Drain water from air receiver by opening drain cock (20, fig. 8).
	Leakage in check valve.	Clean, repair, or replace check valve parts.
Magnetic motor starter kicks out.	Electrical service voltage is too low.	Test, or have power company test, for low voltage.
	Momentary voltage surge.	After several minutes, depress reset pushbutton on magnetic motor starter box.
	Mechanical bind causing motor overload.	Check that electrical motor and flywheel operate freely.
Noisy check valve.	Check valve is worn.	Repair or replace check valve parts.
Excessive V belt wear.	V belts slipping.	Tighten V belts to provide correct tension (paragraph 14).
	Motor pulley and flywheel misaligned.	Move motor pulley in or out by loosening set screw on key and tapping pulley in appropriate direction.



ME 4310-281-15/ 6

- | | | | |
|---|---------------|---|------------------------------|
| 1 | Contact board | 5 | Heating element |
| 2 | Switch | 6 | Magnet and armature assembly |
| 3 | Arm assembly | 7 | Relay |
| 4 | Relay | 8 | Heater |

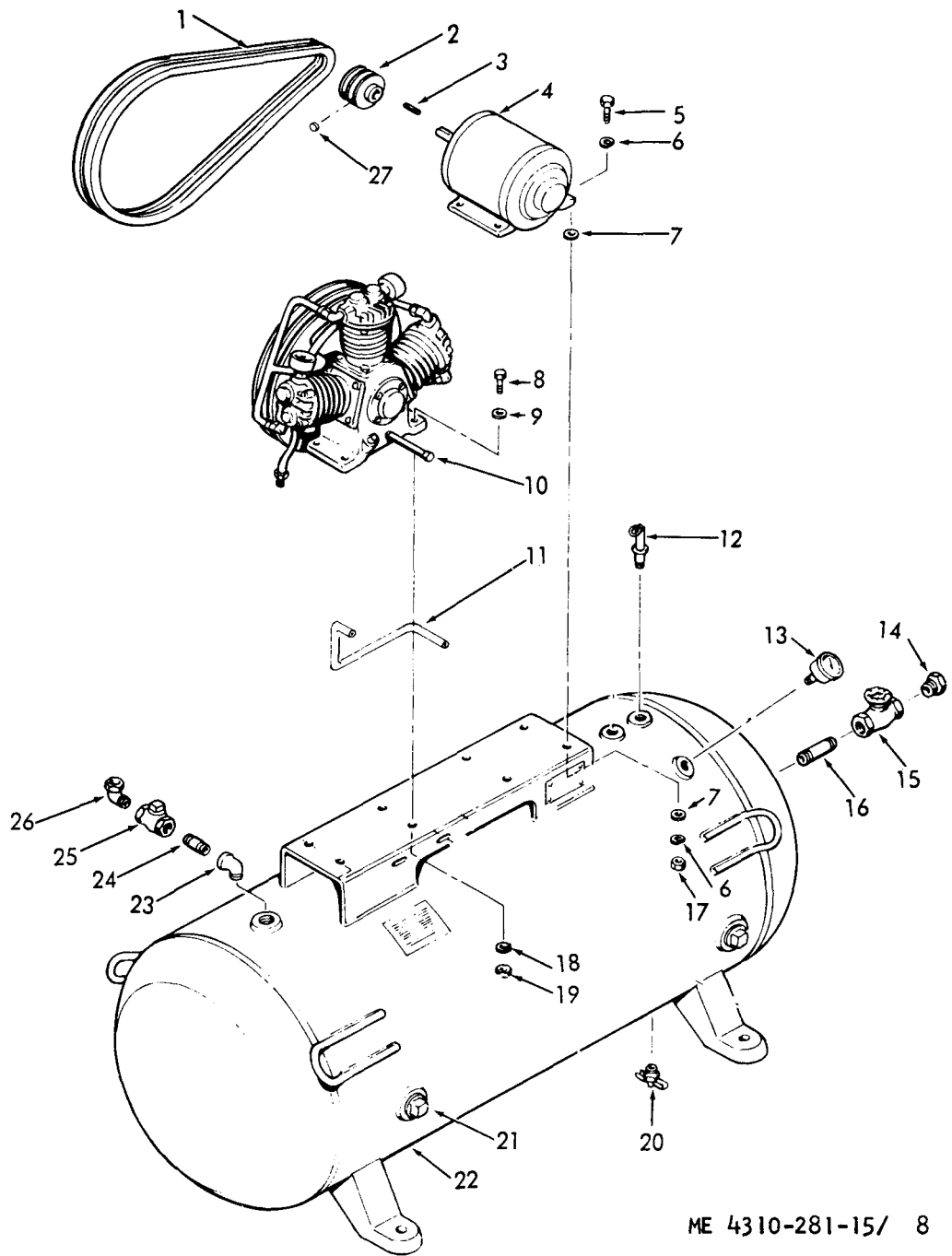
Figure 6. Magnetic Starter (For Model 60CAW20HM-1).



ME 4310-281-15/ 7

- | | |
|-----------------|--------------------------------|
| 1 Contact board | 4 Magnet and armature assembly |
| 2 Switch | 5 Element |
| 3 Arm assembly | 6 Relay |

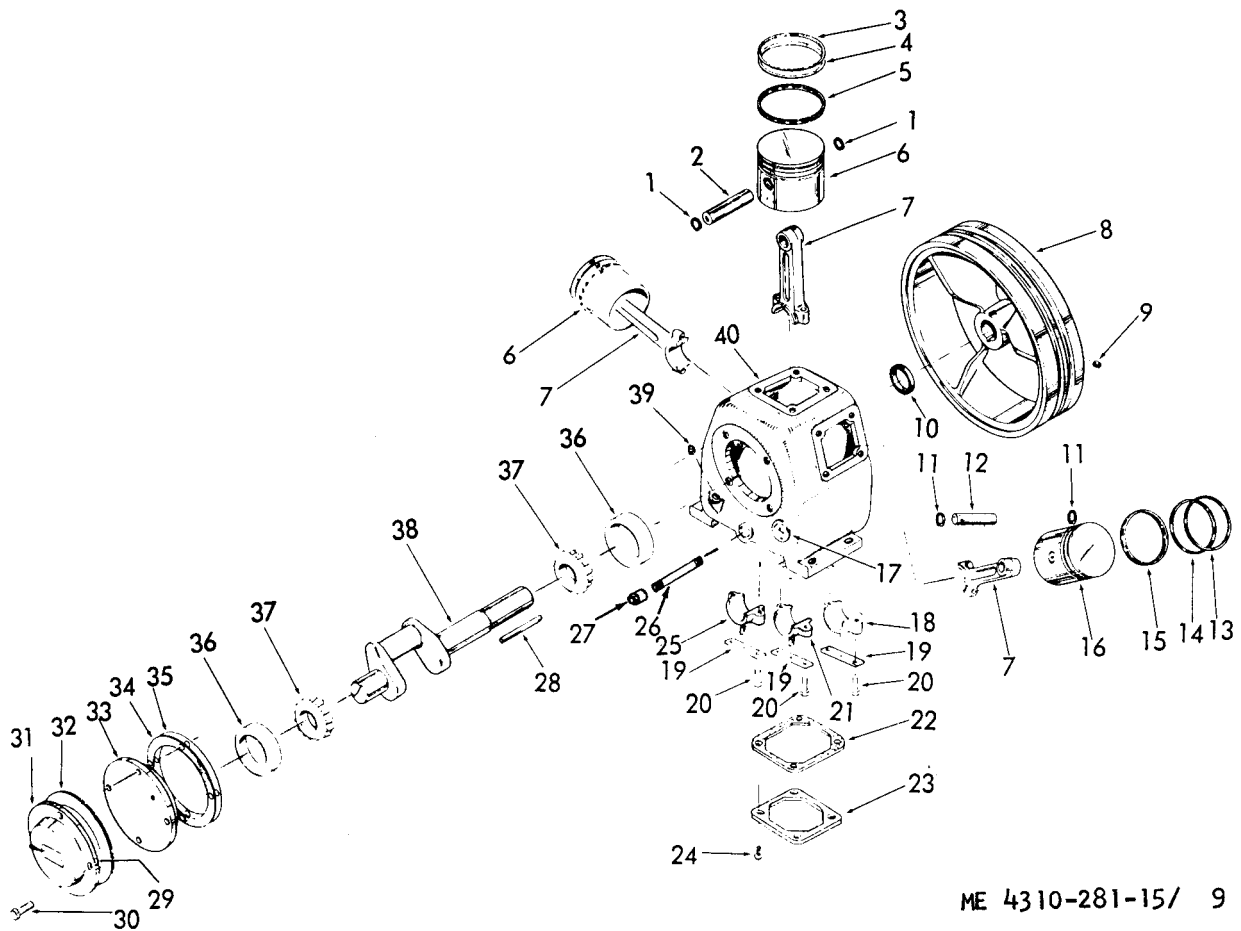
Figure 7. Magnetic Starter (For Model 60CAW20HM-2).



ME 4310-281-15/ 8

- | | | |
|----------|------------------------|-------------|
| 1 Belts | 10 Compressor Assembly | 19 Nut |
| 2 Pulley | 11 Tube | 20 Cock |
| 3 Key | 12 Valve | 21 Plug |
| 4 Motor | 13 Gage | 22 Receiver |
| 5 Screw | 14 Bushing | 23 Elbow |
| 6 Washer | 15 Valve | 24 Nipple |
| 7 Washer | 16 Nipple | 25 Valve |
| 8 Bolt | 17 Nut | 26 Elbow |
| 9 Washer | 18 Washer | 27 Setscrew |

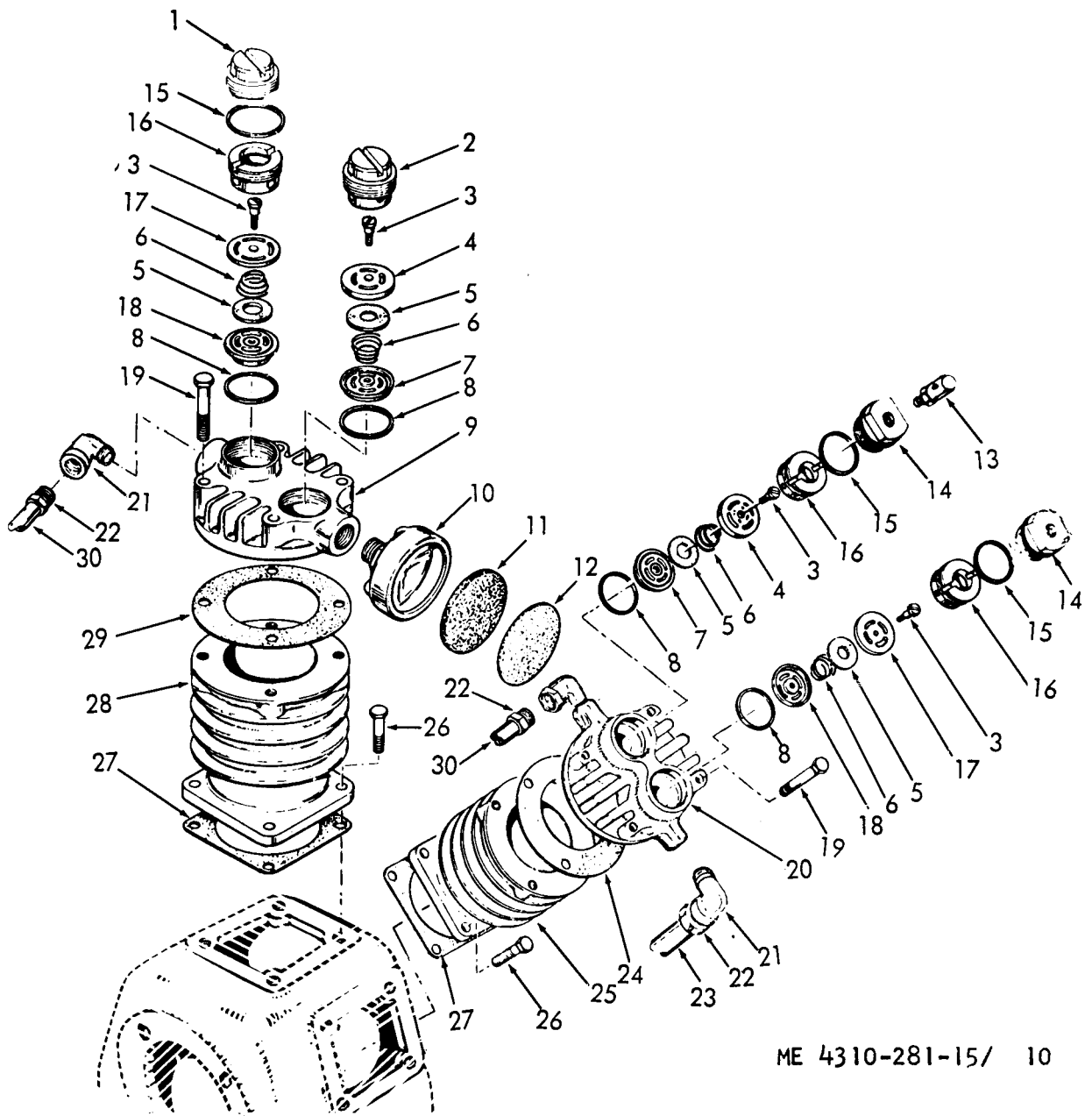
Figure 8. Compressor, Motor and Tank.



ME 4310-281-15/ 9

- | | | | |
|----|----------|----|------------------|
| 1 | Retainer | 21 | Scoop |
| 2 | Pin | 22 | Gasket |
| 3 | Ring | 23 | Plate |
| 4 | Ring | 24 | Screw |
| 5 | Ring | 25 | Scoop |
| 6 | Piston | 26 | Nipple |
| 7 | Rod | 27 | Cap |
| 8 | Flywheel | 28 | Key |
| 9 | Setscrew | 29 | Element |
| 10 | Seal | 30 | Screw |
| 11 | Retainer | 31 | Chamber |
| 12 | Pin | 32 | Gasket |
| 13 | Ring | 33 | Cover |
| 14 | Ring | 34 | Gasket |
| 15 | Ring | 35 | Gasket |
| 16 | Piston | 36 | Cup |
| 17 | Gage | 37 | Cone and Rollers |
| 18 | Scoop | 38 | Crankshaft |
| 19 | Retainer | 39 | Plug |
| 20 | Screw | 40 | Crankcase |

Figure 9. Compressor -
exploded view.



ME 4310-281-15/ 10

- | | | |
|------------|-------------------|-------------------------|
| 1 Cap | 11 Filter element | 21 Elbow |
| 2 Retainer | 12 Filter element | 22 Nut |
| 3 Screw | 13 Valve | 23 Aftercooler assembly |
| 4 Seat | 14 Cap | 24 Gasket |
| 5 Disc | 15 Gasket | 25 Cylinder |
| 6 Spring | 16 Retainer | 26 Bolt |
| 7 Cage | 17 Cage | 27 Gasket |
| 8 Gasket | 18 Seat | 28 Cylinder |
| 9 Head | 19 Bolt | 29 Gasket |
| 10 Body | 20 Head | 30 Intercooler assembly |

Figure 10. Compressor Valves.

APPENDIX A

BASIC ISSUE ITEMS LIST

Section I. INTRODUCTION

1. Scope

This appendix lists items which accompany the air compressor or are required for installation, operation or operator's maintenance.

2. Basic Issue Items -- Section II

This section is a listing of accessories, repair parts, tools, and publications required for operator's maintenance and operation, initially issued with, or authorized for the air compressor.

3. Explanation of Columns

The following provides an explanation of columns in the tabular list of Basic Issue Items, Section II:

a. Source, Maintenance, and Recoverability Codes (SMR), Column 1:

(1) Source Code indicates the selection status and source for the listed item. The Source Code is: P - Applied to repair parts which are stocked in or supplied from GSA/DSA Army supply system, and authorized for use at indicated maintenance categories.

(2) Maintenance Code indicates the lowest category of maintenance authorized to install the listed item. The maintenance level code is: O - Organizational maintenance.

b. Federal Stock Number, Column 2. This column indicates the Federal Stock Number for the item.

c. Description, Column 3. This column indicates the Federal item name and any additional description required. A five-digit manufacturer's or other service code is shown in parentheses followed by the manufacturer's part number. Repair parts quantities included in kits, sets, and assemblies that differ from the actual quantity used in the specific item, are listed in parentheses following the repair part name.

d. Unit of Issue, Column 4. This column indicates the unit used as a basis of issue, e.g., ea, pr, ft, yd, etc.

e. Quantity Incorporated in Unit Pack, Column 5. This column indicates the actual quantity contained in the unit pack.

f. Quantity Incorporated in Unit, Column 6. This column indicates the quantity of the item used in the equipment.

g. Quantity Furnished with Equipment, Column 7. This column indicates the quantity of an item furnished with the equipment in excess of the quantity incorporated in the unit.

h. Quantity Authorized, Column 8. This column indicates the quantity of an item authorized the operator/crew to have on hand or to obtain as required. As required items are indicated with an asterisk.

i. Illustration, Column 9. This column is divided as follows:

(1) Figure Number, column 9a, indicates the figure number of the illustration in which the item is shown.

(2) Item Number, column 9b, indicates the callout number used

to reference the item in the illustration.

4. Federal Supply Code for Manufacturers

Code	Manufacturer
11568	Champion Pneumatic Machinery Co.
23826	Furnas Electric Co.
25472	B. F. Goodrich Co.
81348	Federal Specifications promulgated by General Services Administration

SECTION II

BASIC ISSUE ITEMS LIST

(1) SOURCE, MAINT, AND RECOV CODE			(2) FEDERAL STOCK NO.	(3) DESCRIPTION	(4) UNIT OF ISSUE	(5) QTY INC IN UNIT PACK	(6) QTY INC IN UNIT	(7) QTY FURN WITH EQUIP	(8) QTY AUTH	(9) ILLUSTRATION	
(A)	(B)	(C)								(A) FIG NO.	(B) ITEM NO.
S	M	R									
				GROUP 31 - BASIC ISSUE ITEMS MANUFACTURER INSTALLED							
				3100 - BASIC ISSUE ITEMS, MANUFACTURER OR DEPOT INSTALLED							
P	0		7520-559-9618	CASE: maintenance and operational man- uals, cotton duck, water repellent, mildew-resistant, MIL-B-11743B	EA		1	1	1		
P	0		4310-873-1767	HOSE ASSEMBLY: air tubing (11568) Z538	EA		1	1	1		
P	0		4910-030-2365	GAGE ASSEMBLY: (11568) Z218B	EA		1	1	1		
P	0		4310-994-8886	ELEMENT, HEATER: 115V (23826) H43 (For Model 60CAW20HM-2 only)	EA		2	2	2		
P	0		4310-911-6281	ELEMENT, FILTER: intake, air cleaner, polyurethane foam, reusable (11568) 322A	EA		2	2	2		
P	0		4310-378-9681	ELEMENT, HEATER: 208V (23826) H30 (For Model 60CAW20HM-1 only)	EA		2	2	2		
P	0		6110-802-6784	ELEMENT, HEATER: 230V (23826) H35	EA		2	2	2		
P	0		4310-911-6282	ELEMENT, FILTER: intake, air cleaner (11568) B22B	EA		2	2	2		

SECTION II

BASIC ISSUE ITEMS LIST

(1) SOURCE, MAINT, AND RECOV CODE			(2) FEDERAL STOCK NO.	(3) DESCRIPTION	(4) UNIT OF ISSUE	(5) QTY INC IN UNIT PACK	(6) QTY INC IN UNIT	(7) QTY FURN WITH EQUIP	(8) QTY AUTH	(9) ILLUSTRATION	
(A)	(B)	(C)								(A) FIG NO.	(B) ITEM NO.
S	M	R									
P	0		4310-019-4189	ELEMENT, HEATER: 416V (23826) H24 (For Model 60CAW20HM-1 only)	EA		2	2	2		
P	0			DEPARTMENT OF THE ARMY LUBRICATION ORDER LO 5-4310-281-12	EA		1	1	1		
P	0			DEPARTMENT OF THE ARMY OPERATOR, ORGANIZATIONAL, DIRECT SUPPORT, GENERAL SUPPORT AND DEPOT MAINTENANCE MANUAL TM 5-4310-281-15	EA		1	1	1		
				GROUP 32 - BASIC ISSUE ITEMS TROOP INSTALLED							
P	0		4210-555-8837	EXTINGUISHER, FIRE: monobromotrifluoromethane charged, hand, penetrating seal valve, stored pressure w/bracket, 2.75 lb.	EA			1	*		
P	0		3030-251-3941	BELTS, V: (25472) 4L580-2	SE		1	1	1		

APPENDIX B

MAINTENANCE ALLOCATION CHART

Section I. INTRODUCTION

1. General

a. This section provides a general explanation of all maintenance and repair functions authorized at various maintenance levels.

b. Section II designates overall responsibility for the performance of maintenance functions on the identified end item or component. The implementation of the maintenance functions upon the end item or component will be consistent with the assigned maintenance functions.

c. No special tools and test equipment required for maintenance functions.

d. Section III contains supplemental instructions, explanatory notes and/or illustrations required for a particular maintenance function.

2. Explanation of Columns in Section II

a. Group Number. Column 1. The functional group is a numerical group set up on a functional basis. The applicable functional grouping indexes (obtained from TB 750-93-1, Functional Grouping Codes) are listed on the MAC in the appropriate numerical sequence. These indexes are normally set up in accordance with their function and proximity to each other.

b. Functional Group. Column 2. This column contains a brief description of the components of each functional group.

c. Maintenance Functions. Column 3. This column lists the various maintenance functions (A through K) and indicates the lowest maintenance category authorized to perform these functions. The symbol designations for the various maintenance categories are as follows:

- C - Operator or crew
- O - Organizational maintenance
- F - Direct support maintenance
- H - General support maintenance
- D - Depot maintenance

The maintenance functions are defined as follows:

- A - INSPECT. To determine serviceability of an item by comparing its physical, mechanical, and electrical characteristics with established standards.
- B - TEST . To verify serviceability and to detect electrical or mechanical failure by use of test equipment.
- C - SERVICE. To clean, to preserve, to charge, to paint, and to add fuel, lubricants, cooling agents, and air.
- D - ADJUST. To rectify to the extent necessary to bring into proper operating range.
- E - ALIGN. To adjust specified variable elements of an item to bring to optimum performance.
- F - CALIBRATE. To determine the corrections to be made in the readings of instruments or test equipment used in precise measurement. Consists of the comparisons of two instruments, one of which is a

certified standard of known accuracy, to detect and adjust any discrepancy in the accuracy of the instrument being compared with the certified standard.

G - INSTALL. To set up for use in an operational environment such as an emplacement, site, or vehicle.

H - REPLACE . To replace unserviceable items with serviceable assemblies, subassemblies, or parts.

I - REPAIR . To restore an item to serviceable condition. This includes, but is not limited to, inspection, cleaning, preserving, adjusting, replacing, welding, riveting, and strengthening.

J . OVERHAUL. To restore an item to a completely serviceable condition as prescribed by maintenance serviceability standards using the Inspect and Repair Only as Necessary (IROAN) technique.

K . REBUILD . To restore an item to a standard as nearly as possible to original or new condition in appearance, performance, and life expectancy. This is accomplished through complete disassembly of the item, inspection of all parts or components, repair or replacement of worn or unserviceable elements (items) using original manufacturing tolerances and specifications, and subsequent reassembly of the item.

d. Remarks. Column 4. This column is provided for referencing by code, the remarks (Section III) pertinent to the maintenance functions.

3. Explanation of Columns in Section III.

a. Reference Code. This column consists of two letters separated by a dash, both of which are references to Section II. The first letter references column 5 and the second letter references a maintenance function, column 3, A through K.

b. Remarks. This column lists information pertinent to the maintenance function being performed, as indicated on the MAC Section II.

SECTION II - MAINTENANCE ALLOCATION CHART

22

(1) GROUP NO.	(2) FUNCTIONAL GROUP	(3) MAINTENANCE FUNCTIONS											(4) REMARKS				
		A	B	C	D	E	F	G	H	I	J	K					
		INSPECT	TEST	SERVICE	ADJUST	ALIGN	CALIBRATE	INSTALL	REPLACE	REPAIR	OVERHAUL	REBUILD					
22	BODY CHASSIS OR HULL AND ACCESSORY ITEMS																
2202	Accessory Items																
	Adapter, hose								O								
	Hose assembly								O								
	Chuck, air								O								
2210	Data Plates																
	Plate, identification								F								
40	ELECTRIC MOTOR																
4000	Motor, Alternating Current			C					O	F							
4001	Rotor Assembly								F								
4002	Stator Assembly																
	Frame and stator								F		D						A-J

SECTION II - MAINTENANCE ALLOCATION CHART

(1) GROUP NO.	(2) FUNCTIONAL GROUP	(3) MAINTENANCE FUNCTIONS											(4) REMARKS
		A	B	C	D	E	F	G	H	I	J	K	
		INSPECT	TEST	SERVICE	ADJUST	ALIGN	CALIBRATE	INSTALL	REPLACE	REPAIR	OVERHAUL	REBUILD	
4004	Ventilating System												
	Baffle								F				
4005	Frame Support & Housing												
	Bearings								F				
4006	Starting and Protective Devices (For Model 60CAW- 20HM-2 only)												
	Capacitor		F						F				
	Switch, starter								F				
4007	Drive Components												
	Pulley								O				

23

SECTION II - MAINTENANCE ALLOCATION CHART

24

(1) GROUP NO.	(2) FUNCTIONAL GROUP	(3) MAINTENANCE FUNCTIONS											(4) REMARKS					
		A	B	C	D	E	F	G	H	I	J	K						
		INSPECT	TEST	SERVICE	ADJUST	ALIGN	CALIBRATE	INSTALL	REPLACE	REPAIR	OVERHAUL	REBUILD						
4010	Master Control Assembly																	
	Starter, magnetic										O	O						B-I
	Heater, thermal										O							
	Master control assembly										O	O						
	Switch, pressure					C					O	F						C-I
	Tube, pressure switch to tank										O							
4012	Switches																	
	Switch, push										O							
4014	Terminal Boxes, Panels, Wiring																	
	Conduit										O							
	Wire										O							

SECTION II - MAINTENANCE ALLOCATION CHART

(1) GROUP NO.	(2) FUNCTIONAL GROUP	(3) MAINTENANCE FUNCTIONS											(4) REMARKS		
		A	B	C	D	E	F	G	H	I	J	K			
		INSPECT	TEST	SERVICE	ADJUST	ALIGN	CALIBRATE	INSTALL	REPLACE	REPAIR	OVERHAUL	REBUILD			
47	GAGES (NON-ELECTRICAL)														
4702	Gages														
	Gage, pressure dial								O						
50	PNEUMATIC EQUIPMENT														
5000	Air Compressor Assembly														
	Compressor, air			C				C	O	O	D				
5001	Crankcase, Block, Cylinder Head														
	Crankcase								F						
	Cylinder								F						
	Head, cylinder								O						
5002	Crankshaft														
	Crankshaft								F						

SECTION II - MAINTENANCE ALLOCATION CHART

(1) GROUP NO.	(2) FUNCTIONAL GROUP	(3) MAINTENANCE FUNCTIONS											(4) REMARKS	
		A	B	C	D	E	F	G	H	I	J	K		
		INSPECT	TEST	SERVICE	ADJUST	ALIGN	CALIBRATE	INSTALL	REPLACE	REPAIR	OVERHAUL	REBUILD		
5007	Compressor Drive Belt V				0				0					
5008	Air Intake Filter air, assembly			0					0					
5009	Unloader System Components Valves, relief and safety Springs Valve assembly, unloader Tube, release								0					
5010	Compressor, Cooling Tube, inner cooler after cooler								0					

B-10

27

SECTION II - MAINTENANCE ALLOCATION CHART

82

(1) GROUP NO.	(2) FUNCTIONAL GROUP	(3) MAINTENANCE FUNCTIONS											(4) REMARKS				
		A	B	C	D	E	F	G	H	I	J	K					
		INSPECT	TEST	SERVICE	ADJUST	ALIGN	CALIBRATE	INSTALL	REPLACE	REPAIR	OVERHAUL	REBUILD					
5014	Air Receiver Tank assembly Valve check		F	C							O	O					
5015	Air Discharge System Valve, globe Cock drain Valve, pressure										O	O	O				
76	FIRE FIGHTING EXTINGUISHER																
7603	Fire Extinguisher Extinguisher, fire			O							O						

D-I

SECTION III
REMARKS

REFERENCE CODE	REMARKS
A-J	Rewind stator (TM 5-764 Electric Motor and Generator Repair)
B-I	Install kit
C-I	Install kit
D-I	Install kit

APPENDIX C
REPAIR PARTS LIST
SECTION I
INTRODUCTION

C-1. Scope

This appendix lists repair parts required for the performance of organizational, direct support, general support, and depot maintenance of the Champion Compressor.

C-2. General

a. The repair parts list is arranged as follows:

- (1) Individual parts and major assemblies are listed alphabetically by item name within the numbered functional groups.
- (2) Assembly components and subassemblies are indented and listed alphabetically by item name under major assemblies.

b. This Repair Parts and Special Tools List is divided into the following sections:

- (1) Prescribed Load Allowance (PLA) - Section II. A consolidated listing of repair parts quantitatively allocated for initial stockage at the organizational level. This is a mandatory minimum stockage allowance.
- (2) Special Tools, Test and Support Equipment - Section III. A list of special tools, test and support equipment authorized for the performance of maintenance at the organizational level. Not Applicable.

- (3) Repair Parts - Section IV. A list of repair parts authorized for the performance of maintenance at the organizational level.
- (4) Repair Parts - Section V. A list of repair parts authorized for the performance of maintenance at the direct support, general support, and depot level.
- (5) Special Tools, Test and Support Equipment - Section VI. A list of special tools, test and support equipment authorized for the performance of maintenance at the direct support, general support, and depot level. Not Applicable.
- (6) Federal Stock Number and Reference Number Index - Section VII. A list of Federal stock numbers followed by reference numbers, appearing in all the listings, in ascending alphanumeric sequence cross-referenced to index number.

C-3. Explanation of Columns

The following provides an explanation of columns in the tabular lists in sections II through VI.

a. Source, Maintenance, and Recoverability Codes (SMR).

- (1) Source Code. Indicates the selection status and source for the listed item. Source codes used are:

Code	Explanation
P	Applied to repair parts which are stocked in or supplied from DSA/GSA or Army supply system, and authorized for use at indicated maintenance categories.
M	Applied to repair parts which are not procured or stocked but are to be manufactured at indicated maintenance categories.

Code	Explanation
A	Applied to assemblies which are not procured or stocked as such but made up of two or more units, each of which carry individual stock numbers and descriptions and are procured and stocked and can be assembled by units at indicated maintenance categories.
X	Applied to parts and assemblies which are not procured or stocked, the mortality of which is normally below that of the applicable end item, and the failure of which should result in retirement of the end item from the supply system.
X1	Applied to repair parts which are not procured or stocked, the requirement for which will be supplied by use of the next higher assembly or components.
X2	Applied to repair parts which are not stocked. The indicated maintenance category requiring such repair parts will attempt to obtain them through cannibalization; if not obtainable through cannibalization, such repair parts will be requisitioned with supporting justification through normal supply channels.
C	Applied to repair parts authorized for local procurements. If not obtainable from local procurement, such repair parts will be requisitioned through normal supply channels with a supporting statement of nonavailability from local procurement.
G	Applied to major assemblies that are procured with PEMA (Procurement Equipment Missile Army) funds for initial issue

Code	Explanation
	only to be used as exchange assemblies at DSU and GSU maintenance level. These assemblies will not be stocked above DSU and GSU level or returned to depot supply level.
	<u>Note.</u> Source code is not shown on common hardware items known to be readily available in Army supply channels and through procurement.

- (2) **Maintenance Code.** Indicates the lowest category of maintenance authorized to install the listed item. The maintenance level codes are:

Code	Explanation
O	Organizational maintenance
F	Direct support maintenance
H	General support maintenance
D	Depot maintenance

- (3) **Recoverability Code.** Indicates whether unserviceable items should be returned for recovery or salvage. Items not coded are expendable. Recoverability codes are:

Code	Explanation
R	Applied to repair parts and assemblies which are economically repairable at DSU and GSU activities and normally are furnished by supply on an exchange basis.
T	Applied to high dollar value recoverable repair parts which are subject to special handling and are issued on an exchange basis. Such repair parts normally are repaired or overhauled at depot maintenance activities.

Code	Explanation
U	Applied to repair parts specifically selected for salvage by reclamation units because of precious metal content, critical materials, high dollar value reusable casings or castings.

(4) This column also lists, below the SMR code, an index number for each item in ascending numerical sequence, which is used to locate items in the publication when the Federal stock number and/or reference number is known.

b. Federal Stock Number. Indicates the Federal stock number for the item.

c. Description. Indicates the Federal item name and any additional description of the item required. A part number or other reference number is followed by the applicable five-digit Federal supply code for manufacturers in parentheses.

d. Unit of Issue. Indicates the unit used as a basis for issue, e.g., ea, pr, ft, yd, etc.

e. Quantity Incorporated in Unit Pack. Indicates the actual quantity contained in the unit pack.

f. Quantity Incorporated in Unit. Indicates the quantity of the item used in the functional group,

g. Fifteen-Day Organizational Maintenance Allowances.

(1) The allowance columns are divided into four subcolumns. Indicated in each subcolumn opposite the first appearance of each item is the total quantity of items authorized for the number of equipments supported. Subsequent appearances of the

same item will have no entry in the allowance columns but will have in the description column a reference to the first appearance of the item. Items authorized for use as required but not for initial stockage are identified with an asterisk in the allowance column.

- (2) The quantitative allowances for organizational level of maintenance represents one initial prescribed load for a 15-day period for the number of equipments supported. Units and organizations authorized additional prescribed loads will multiply the number of prescribed loads authorized by the quantity of repair parts reflected in the appropriate density column to obtain the total quantity of repair parts authorized.
- (3) Organizational units providing maintenance for more than 100 of these equipments shall determine the total quantity of parts required by converting the equipment quantity to a decimal factor by placing a decimal point before the next to last digit of the number to indicate hundredths, and multiplying the decimal factor by the parts quantity authorized in the 51-100 allowance column. Example, authorized allowance for 51-100 equipments is 12; for 140 equipments multiply 12 by 1.40 or 16.80 rounded off to 17 parts required.
- (4) Subsequent changes to allowances will be limited as follows:
No change in the range of items is authorized. If additional items are considered necessary, recommendation should be forwarded to U. S. Army Mobility Equipment Command for ex-

ception or revision to the allowance list. Revisions to the range of items authorized will be made by this Command based upon engineering experience, demand data, or TAERS information.

h. Thirty-Day DS/GS Maintenance Allowances.

- (1) The allowance columns are divided into three subcolumns. Indicated in each subcolumn, opposite the first appearance of each item, is the total quantity of items authorized for the number of equipments supported. Subsequent appearances of same item will have no entry in the allowance column, but will have in the description column a reference to the first appearance of the item. Items authorized for use as required but not for initial stockage are identified with an asterisk in the allowance column.
- (2) The quantitative allowances for DS/GS levels of maintenance will represent initial stockage for a 30-day period for the number of equipments supported.
- (3) Determination of the total quantity of parts required for maintenance of more than 100 of these equipments can be accomplished by converting the equipment quantity to a decimal factor by placing a decimal point before the next to last digit of the number by the parts quantity authorized in the 51-100 allowance column. Example, authorized allowance for 51-100 equipments is 40; for 150 equipments multiply 40 by 1.50 or 60 parts required.

i. One-Year Allowances Per 100 Equipments/Contingency Planning Purposes. Indicates opposite the first appearance of each item the

total quantity required for distribution and contingency planning purposes. The range of items indicates total quantities of all authorized items required to provide for adequate support of 100 equipments for one year.

j. Depot Maintenance Allowance Per 100 Equipments. Indicates opposite the first appearance of each item the total quantity authorized for depot maintenance of 100 equipments. Subsequent appearances of the same item will have no entry in this column, but will have in the description column a reference to the first appearance of the item. Items authorized for use but not for initial stockage are identified with an asterisk in the allowance column.

k. Illustration.

(1) Figure Number. Indicates the figure number of the illustration in which the item is shown.

(2) Item Number. Indicates the callout number used to reference the item in the illustration.

C-4. Special Information

a. Identifications of the usable on codes of this publication are:

Code	Used on
A	Champion Compressor, Model 60CAW20HM-1
B	Champion Compressor, Model 60CAW20HM-2

Repair parts not symbolized are used on all models.

b. Repair parts mortality has been based on 1200 hours of operation per year.

c. Parts which require manufacture or assembly at a category higher than that authorized for installation will indicate in the source

column the higher category.

C-5. How to Locate Repair Parts

a. When Federal Stock Number or reference number is unknown:

(1) First. Using the table of contents, determine the functional group or subgroup within which the repair part belongs.

This will refer to a page in the parts listing.

(2) Second. The illustration column of the page refers to a figure number.

(3) Third. Locate the figure and identify the repair parts, noting the item number.

(4) Fourth. Refer back to the page of the parts listing. Find the item number in the illustration column that corresponds with the figure number.

b. When Federal Stock number or reference number is known:

(1) First. Using the Index of Federal Stock Numbers and Reference Numbers, find the pertinent Federal stock number or reference number. This index is in ascending alphanumeric sequence cross-referenced to an index number.

(2) Second. Using the Repair Part Listing, find the index number referenced in the Index of Federal Stock Numbers and Reference Numbers.

C-6. Abbreviations

Abbreviations	Explanation
hp	Horsepower
in.	Inch (es)

Abbreviations	Explanation
lg	long
mtg	mounted (ing)
no.	number
sq	square
thd	thread
thk	thick

C-7. Federal Supply Codes for Manufacturers

Code	Manufacturer
11568	Champion Pneumatic Machinery Co.
23452	Franklin Electric Co. Inc.
23826	Furnas Electric Co.
24981	Gits Bros. Mfg. Co.
53477	Schraders A and Son Division of Scovill Mfg. Co.
60038	Timken Roller Bearing Co.
72219	Consolidated Brass Co.
73559	Carling Electric Inc.
74851	Independent Rubber Co.
75336	Kingston F. C. Co.
78394	Swan Rubber Co.
80201	Chicago Rawhide Mfg. Co.
81348	Federal Specifications Promulgated by General Services Administration
86107	Central Brass Mfg. Co.
94894	Punxsutawny Co.
96906	Military Standards Promulgated by Standardiza- tion Div Directorate of Logistic Services DSA

SECTION II

PRESCRIBED LOAD ALLOWANCE							
(1) FEDERAL STOCK NUMBER	(2) DESCRIPTION useable on code	(3) QTY INC IN UNIT PACK	(4) 15-DAY ORG MAINT. ALW				
			(A)	(B)	(C)	(D)	
			1-5	6-20	21-50	51-100	
	4010 - MASTER CONTROL ASSEMBLY						
4310-019- 4189	HEATER, THERMAL RELEASE: starter switch (A) (23826) H24		*	*	*	2	
4310-378- 9681	HEATING ELEMENT, ELECTRICAL: starter switch (A) (23826) H30		*	*	*	2	
4310-994- 8886	ELEMENT, HEATER: starter switch (B) (23826) H43		*	*	*	2	
6110-802- 6784	HEATER, THERMAL RELEASE: starter switch (B) (23826) H35		*	*	*	2	
	4012 - SWITCHES						
5930-241- 8921	SWITCH, TOGGLE: starter switch (73559) 2DA25-73		*	*	*	2	
	5005 - VALVES						
4310-911- 6608	VALVE ASSEMBLY, EXHAUST (11568) Z122A		*	*	2	2	
4310-911- 6609	VALVE ASSEMBLY, INTAKE: low pressure (11568) Z121A		*	*	*	2	
	5007 - COMPRESSOR DRIVE						
3030-251- 3941	BELTS, V, MATCHED SET (2 belts per set) (7485 1) 4L580-2		*	*	2	2	
	5008 - AIR INTAKE						
4310-911- 6281	FILTER ELEMENT, INTAKE: front (11568) B22A		*	2	2	2	
4310-911- 6282	FILTER ELEMENT, INTAKE: rear (11568) B22B		*	2	2	2	
	5014 - AIR RECEIVER						
4310-875- 4108	SPRING: check valve (11568) M453A		*	*	2	2	

40

(1) SMR CODE INDEX NO.	(2) FEDERAL STOCK NUMBER	(3) DESCRIPTION Reference Number & Mfr Code Usable on Code	(4) UNIT OF ISSUE	(5) QTY INC IN UNIT PACK	(6) QTY INC IN UNIT	(7) 15-DAY ORGANIZATIONAL MAINTENANCE ALW				(8) ILLUS- TRATION	
						(a)	(b)	(c)	(d)	(a) FIG NO.	(b) ITEM NO.
						1-5	6-20	21-50	51-100		
00001		SECTION IV - REPAIR PARTS FOR ORGANIZATIONAL MAINTENANCE									
00001A		GROUP 22 - BODY, CHASSIS OR HULL AND ACCESSORY ITEMS									
00002		2202 - ACCESSORY ITEMS									
P O 00003	4910-030-2365	GAGE, TIRE PRESSURE G1506 (81348)	EA	1	1	*	*	*	*	C2	
X1 00005		COUPLER INFLATOR 61F1-71S (94894)	EA	1	1					C2	7
X1 00006	6685-910-8359	GAGE, PRESSURE, DIAL: JUMBO PROBE 1506 (94894)	EA	1	1					C2	6
X1 00007		PLUG: JUMBO PROBE 729 (94894)	EA	1	1					C1	8
X1 00008		HOSE, WHIP: INFLATOR 506-32 (94894)	EA	1	1					C2	3
X1 00009	4910-806-8185	INFLATOR-GAGE, PNEUMATIC 506 (94894)	EA	1	1					C2	4
X1 00010		KEY RING: CHAIN TO INFLATOR 1508 (94894)	EA	1	1					C2	9
X1 00011		KEY RING: PROBE TO CHAIN 1509 (94894)	EA	1	2					C2	5
X1 00012		PROBE STANDARD: INFLATOR 5004 (94894)	EA	1	1					C2	1
X1 00013		PLUG: STANDDARD PLUG 729 (94894)	EA	1	1					C2	8
P O 00014	4310-873-1767	HOSE ASSEMBLY, AIR: TANK TO GAGE, 25 FT LG Z538 (11568)	EA	1	1	*	*	*	*	C1	
X20 00015	4730-595-1721	ADAPTER, STRAIGHT, PIPE TO HOSE: AIR HOSE 6362 (53477)	EA	1	1					C1	6

(1) SMR CODE INDEX NO.	(2) FEDERAL STOCK NUMBER	(3) DESCRIPTION Reference Number & Mfr Code Usable on Code	(4) UNIT OF ISSUE	(5) QTY INC IN UNIT PACK	(6) QTY INC IN UNIT	(7) 15-DAY ORGANIZATIONAL MAINTENANCE ALW				(8) ILLUS- TRATION		
						(a)	(b)	(c)	(d)	(a) FIG NO.	(b) ITEM NO.	
						1-5	6-20	21-50	51-100			
X20 00016		COUPLING: HOSE TO TANK M3413 (72219)	EA	1	1					C1	1	
X20 00017		FERRULE, HOSE DD (53477)	EA	1	2					C1	4	
X1 00018		HOSE, RUBBER: AIR HOSE 25 FT 11613 (7839A)	EA	1	1					C1	5	
X20 00019		NUT, UNION: HOSE FERRULE C1439 (72219)	EA	1	1					C1	2	
X20 00020		STEM, HOSE J2807 (72219)	EA	1	1					C1	3	
00024 00025		GROUP 40 - ELECTRIC MOTOR 4000 - MOTOR										
P O 00026	6105-849-2300	MOTOR, ELECTRIC: 2 HP 2HP184FR (23452)	A	EA	1	1	*	*	*	*	C8	4
P O 00027		MOTOR ELECTRIC 4100121101 (23452)	B	EA	1	1	*	*	*	*	C8	4
O 00028	5310-638-3899	NUT, PLAIN, HEXAGON: MOTOR MTG, 3/8-16 UNC M909A (11568)		EA	1	1					C8	17
O 00029	5305-186-7448	SCREW, CAP, HEXAGON HEAD: MOTOR MTG, 3/8-16 THD SIZE, 1 1/4 IN. LG M456 (11568)		EA	1	4					C8	5
O 00030	5310-018-7076	WASHER, FLAT: MOTOR MTG, 3/8 IN. SCREW SIZE SE5-88 (11568)		EA	1	4					C8	7
O 00031	5310-010-3321	WASHER, LOCK: MOTOR MTG, 3/8 IN. SCREW SIZE M917H (11568)		EA	1	12					C8	6

(1) SMR CODE INDEX NO.	(2) FEDERAL STOCK NUMBER	(3) DESCRIPTION Reference Number & Mfr Code	(4) UNIT OF ISSUE	(5) QTY INC IN UNIT PACK	(6) QTY INC IN UNIT	(7) 15-DAY ORGANIZATIONAL MAINTENANCE ALW				(8) ILLUS- TRATION		
						(a)	(b)	(c)	(d)	(a) FIG NO.	(b) ITEM NO.	
						1-5	6-20	21-50	51-100			
00066		4007 - DRIVE COMPONENTS										
O 00067	5315-526-9637	KEY, MACHINE: PULLEY, 3/16 IN. SQ. 1 1/4 IN. LG T8 (11568)	EA	1	1					C8	3	
X20 00068	3020-837-1270	PULLEY, GROOVE: ELECTRIC MOTOR M498 (11568)	EA	1	1					C8	2	
O 00069	5305-010-2728	SETSCREW: PULLEY MTG, 3/8-16 TWO SIZE, 3/8 IN. LG M568 (11568)	EA	1	1					C8	27	
00070		4010 - MASTER CONTROL ASSEMBLY										
PO 00071	4310-994-8886	ELEMENT, HEATER: STARTER SWITCH H43 (23826)	B	EA	1	2	*	*	*	2	C7	5
PO 00072	4310-378-9681	HEATING ELEMENT, ELECTRICAL: STARTER SWITCH H30 (23826)	A	EA	1	2	*	*	*	2	C6	5
PO 00073	4310-019-4189	HEATER, THERMAL RELEASE: STARTER SWITCH H24 (23826)	A	EA	1	2	*	*	*	2	C6	8
PO 00074	6110-082-6784	HEATER, THERMAL RELEASE: STARTER SWITCH H35 (23826)	B	CA	1	2	*	*	*	2		
O 00075	5310-011-3739	NUT, PLAIN, HEXAGON: STARTER MTG, 1/4-20 THD SIZE M907A (11568)	EA	1	2							
O 00076	5305-639-8115	SCREW, CAP, HEXAGON HEAD: STARTER MTG, 1/4-20 THD SIZE, 3/4 IN. LG M696 (11568)	EA	1	4							
PO 00077	6110-891-0905	STARTER, COMPRESSOR: ELECTRIC MOTOR 14CA32BCX26 (23826)	A	EA	1	1	*	*	*	*		
X1 00078		ARM ASSEMBLY, CROSS: STARTER D50937-10 (23826)	A	EA	1	1					C6	3
X1 00079		CONTACT BOARD: STARTER D50912-13 (23826)	A	EA	1	1					C6	1

(1) SMR CODE INDEX NO.	(2) FEDERAL STOCK NUMBER	(3) DESCRIPTION Reference Number & Mfr Code Usable on Code		(4) UNIT OF ISSUE	(5) QTY INC IN UNIT PACK	(6) QTY INC IN UNIT	(7) 15-DAY ORGANIZATIONAL MAINTENANCE ALW				(8) ILLUS- TRATION	
							(a) 1-5	(b) 6-20	(c) 21-50	(d) 51-100	(a) FIG NO.	(b) ITEM NO.
X1 00080	5945-910-4717	MAGNET AND ARMATURE ASSEMBLY: STARTER D16577-1 (23826)	A	EA	1	1					C6	6
X1 00081		RELAY: THERMAL OVERLOAD 480811A (23826)	A	EA	1	1					C6	4
X1 00082		RELAY: THERMAL OVERLOAD, QUICK TRIP 480812A (23826)	A	EA	1	1					C6	7
P 0 00083		STARTER, COMPRESSOR: ELECTRIC MOTOR 14DA12BAX26 (23826)	B	EA	1	1	*	*	*	*	C7	
X1 00084		ARM ASSEMBLY, CROSS: STARTER D50937-10 (23826)	B	EA	1	1					C7	3
X1 00085		CONTACT BOARD; STARTER D50912-13 (23826)	B	EA	1	1					C7	1
X1 00086	5945-910-4717	MAGNET AND ARMATURE ASSEMBLY: STARTER D16577-1 (23826)	B	EA	1	1					C7	4
X1 00087		RELAY: THERMAL OVERLOAD 480B11A (23826)	B	EA	1	1					C7	6
P O 00088		5930-501-0059	SWITCH, PRESSURE: 140 TO 175 PSI HJ1 (23826)		EA	1	1	*	*	*	*	C5
X1 00089	5930-772-6081	BAR, TOP D9935-1 (23826)		EA	1	1					C5	4
X1 00090		CONTACT BOARD: PRESSURE SWITCH D1673-1 (23826)		EA	1	1					C5	1
X1 00091		COVER, ENCLOSURE: PRESSURE SWITCH D9943-10 (23826)		EA	1	1					C5	7
X1 00092		DIAPHRAGM, ELECTRICAL D7878-1 (23826)		EA	1	1					C5	9
X1 00093	6110-820-0708	DIAPHRAGM, NEOPREME D274-1 (23826)		EA	1	1					C5	10
X1 00094		EQUALIZER: SPRING D276-1 (23826)		EA	1	1					C5	2

(1) SMR CODE INDEX NO.	(2) FEDERAL STOCK NUMBER	(3) DESCRIPTION Reference Number & Mfr Code Usable on Code	(4) UNIT OF ISSUE	(5) QTY INC IN UNIT PACK	(6) QTY INC IN UNIT	(7) 15-DAY ORGANIZATIONAL MAINTENANCE ALW				(8) ILLUS- TRATION		
						(a)	(b)	(c)	(d)	(a) FIG NO.	(b) ITEM NO.	
						1-5	6-20	21-50	51-100			
X1 00095		FRAME, WITH KNIFE EDGE BEARINGS D9078-1 (23826)	EA	1	1					C5	14	
X1 00096		LEVER: PRESSURE SWITCH D1366 (23826)	EA	1	1					C5	15	
X1 00097		SCREW, DIFFERENTIAL AND NUT D9096-1 (23826)	EA	1	1					C5	6	
X1 00098	5305-808-3109	SCREW, PRESSURE ADJUSTING D323-1 (23826)	EA	1	1					C5	5	
X1 00099	5930-530-4936	SPRING, HELICAL, COMPRESSION: PRESSURE SWITCH D467-1 (23826)	EA	1	1					C5	8	
X1 00100	6110-887-5001	STIRRUP; DIAPHRAGM PLATE D10456-1 (23826)	EA	1	1					C5	11	
X1 00101	5930-756-9452	SPRING, HELICAL, EXTENSION: PRESSURE SWITCH D357-1 (23826)	EA	1	1					C5	12	
X1 00102	5304-o805-O8	SPRING, MAIN: PRESSURE SWITCH D10037-1 (23826)	EA	1	1					C5	3	
X1 00103	6110-877-5005	TOGGLE BAR: PRESSURE SWITCH D317-2 (23826)	EA	1	1					C5	13	
O 00104	5310-010-3339	WASHER, FLAT: STARTER MTG 1/4 IN. SCREW SIZE M905A (11568)	EA	1	4							
O 00105	5310-011-4604	WASHER, LOCK: STARTER MTG, 1/4 IN. SCREW SIZE M919A (11568)	EA	1	4							
00106		4012 - SWITCHES										
P O 00107	5930-241-8921	SWITCH, TOGGLE: STARTER SWITCH 2DA25-73 (73559)	A	EA	1	1	*	*	*	2	C6	2
P O 00108	5930-241-8921	SWITCH, TOGGLE: STARTER SWITCH 2DA25-73 (73559) (SEE INDEX NO. 107 FOR STOCKAGE ALLOWANCES)	B	EA	1	1					C7	2

(1) SMR CODE INDEX NO.	(2) FEDERAL STOCK NUMBER	(3) DESCRIPTION Reference Number & Mfr Code Usable on Code		(4) UNIT OF ISSUE	(5) QTY INC IN UNIT PACK	(6) QTY INC IN UNIT	(7) 15-DAY ORGANIZATIONAL MAINTENANCE ALW				(8) ILLUS- TRATION		
							(a) 1-5	(b) 6-20	(c) 21-50	(d) 51-100	(a) FIG NO.	(b) ITEM NO.	
00109		4014 - TERMINAL BOXES, PANELS, WIRING											
X1 00110		BOX, BOTTOM: ELECTRIC MOTOR, CONDUIT 110202-901 (23452) (COMPONENT or MOTOR, STOCK No. 6105-849-2300, GROUP 4000)		A	EA	1	1					C3	12
X1 00111		BOX, BOTTOM ELECTRIC MOTOR, CONDUIT 110202-901 (23452) (COMPONENT or MOTOR, STOCK No. (23452) 4100121101, GROUP 4000)		B	EA	1	1					C4	13
X1 00112		COVER, CONDUIT MOTOR 110043-101 (23452) (COMPONENT or MOTOR, STOCK No. 6105-849-2300, GROUP 4000)		A	EA	1	1					C3	10
X1 00113		COVER, CONDUIT BOX: ELECTRIC MOTOR 110043-101 (23452) (COMPONENT or MOTOR, STOCK No. (23452) 4100121101, GROUP 4000)		B	EA	1	1					C3	10
O 00114	5305-98M1723	SCREW, MACHINE: CONDUIT BOX MTG, 1/4-20 THD SIZE, 1/2 IN. LG 110229-106 (23452)		A	EA	1	2					C3	11
O 00115	5305-98.-1723	SCREW, MACHINE: CONDUIT BOX MTG, 1/4-20 THD SIZE, 1/2 IN. LG 110229-106 (23452)		B	EA	1	2					C3	11
O 00116	5305-071-2091	SCREW, MACHINE: CONDUIT COVER MTG, 1/4-20 THD SIZE, 3 IN. LG 275150-518 (23452)		A	EA	1	2					C3	9
O 00117	5305-071-2091	SCREW, MACHINE: CONDUIT COVER MTG, 1/4-20 THD SIZE 3 IN. LG 275150-518 (23452)		B	EA	1	2					C4	14
00118		GROUP 47 - GAGES (NON-ELECTRICAL)											
00119		4702 - GAGES											
P O 00120	6685-00- 425-2373	GAGE, PRESSURE, DIAL: 1/4, 0 TO 300 POUND 058755 (61349)			EA	1	1	*	*	*	*	C8	13

(1) SMR CODE INDEX NO.	(2) FEDERAL STOCK NUMBER	(3) DESCRIPTION Reference Number & Mfr Code Usable on Code	(4) UNIT OF ISSUE	(5) QTY INC IN UNIT PACK	(6) QTY INC IN UNIT	(7) 15-DAY ORGANIZATIONAL MAINTENANCE ALW				(8) ILLUS- TRATION	
						(a)	(b)	(c)	(d)	(a) FIG NO.	(b) ITEM NO.
						1-5	6-20	21-50	51-100		
00121		GROUP 50 - PNEUMATIC EQUIPMENT									
00122		5000 - AIR COMPRESSOR ASSEMBLY									
O 00123	5306-298-781	SCREW, HEXAGON HEAD: COMPRESSOR MTG, 5/16-18 THD SIZE, 1 1/4 IN. LG	EA	1	4					C8	8
X20 R 00124		COMPRESSOR ASSEMBLY, AIR CAM (11568)	EA	1	1					C8	10
O 00125	5310-012-0376	NUT, PLAIN, HEXAGON: COMPRESSOR MTG, 5/16-18 THD SIZE M935A (11568)	EA	1	8					C8	19
O 00126	5310-010-3331	WASHER, FLAT: COMPRESSOR MTG, 3/8 IN. SCREW SIZE	EA	1	4					C8	9
O 00127	5310-514-6674	WASHER, LOCK: COMPRESSOR MTG, 5/16 IN. SCREW SIZE M911A (11568)	EA	1	8					C8	18
00128		5001 - CRANKCASE, BLOCK, CYLINDER HEAD									
O 00129	5306-206-5613	BOLT, MACHINE: CYLINDER HEAD MTG, 5/16-18 THD SIZE, 1 1/4 IN. LG M457 (11568)	EA	1	8					C10	19
X20 00139		GASKET: CYLINDER HEAD, HIGH PRESSURE C31 (11568)	EA	1	1					C10	24
P O 00140	4310-901-0359	GASKET CYLINDER HEAD, LOW PRESSURE B31 (11568)	EA	1	2	*	*	*	*	C10	29
X20 00141		HEAD, CYLINDER: HIGH PRESSURE C1 (11568)	EA	1	1					C10	20
X20 00142		HEAD, CYLINDER: LOW PRESSURE B1A (11568)	EA	1	2					C10	9

(1) SMR CODE INDEX NO.	(2) FEDERAL STOCK NUMBER	(3) DESCRIPTION Reference Number & Mfr Code Usable on Code		(4) UNIT OF ISSUE	(5) QTY INC IN UNIT PACK	(6) QTY INC IN UNIT	(7) 15-DAY ORGANIZATIONAL MAINTENANCE ALW				(8) ILLUS- TRATION	
							(a)	(b)	(c)	(d)	(a) FIG NO.	(b) ITEM NO.
							1-5	6-20	21-50	51-100		
00169		5005 - VALVES										
X20 00170		CAP, VALVE CHAMBER: HIGH PRESSURE C28A (11568)		EA	1	2					C10	14
X20 00171		CAP, VALVE CHAMBER: LOW PRESSURE B28A (11568)		EA	1	2					C10	1
PO 00172	4310-900-2318	GASKET: VALVE CHAMBER CAP B75 (11568)		EA	1	4					C10	15
X20 00173		RETAINER, INTAKE VALVE B23 (11568)		EA	1	2					C10	2
X20 00174		RETAINER, VALVE B26A (11568)		EA	1	4					C10	16
PO 00175	4310-911-6608	VALVE ASSEMBLY, EXHALIST Z122A (11568)		EA	1	3	*	*	2	2		
X1 00176		CAGE, EXHAUST VALVE U69A (11568)		EA	1	3					C10	17
X1 00177	4310-893-5124	DISC, COMPRESSOR VALVE U70A (11568)		EA	1	3					C10	5
PO 00178	4310-900-2317	GASKET: EXHAUST VALVE U48 (11568)		EA	1	6	*	*	*	*	C10	8
O 00179	5305-156-2357	SCREW, MACHINE: CAGE MTG, NO. 8-32 THD SIZE, 7/16 IN. LG U81 (11568)		EA	1	3					C10	3
X1 00180		SEAT, EXHAUST VALVE U68A (11568)		EA	1	3					C10	18
PO 00181	4310-893-5126	SPRING, COMPRESSOR VALVE U71 (11568)		EA	1	3	*	*	*	*	C10	6
PO 00182	4310-911-6607	VALVE ASSEMBLY, INTAKE: HIGH PRESSURE Z184 (79150)		EA	1	1	*	*	*	*		
X1 00183		CAGE, INTAKE VALVE U67A (11568)		EA	1	1					C10	7
X1 00184		DISC, COMPRESSOR VALVE U70A (11568)		EA	1	1					C10	5

(1) SMR CODE INDEX NO.	(2) FEDERAL STOCK NUMBER	(3) DESCRIPTION Reference Number & Mfr Code	(4) UNIT OF ISSUE	(5) QTY INC IN UNIT PACK	(6) QTY INC IN UNIT	(7) 15-DAY ORGANIZATIONAL MAINTENANCE ALW				(8) ILLUS- TRATION	
						(a)	(b)	(c)	(d)	(a) FIG NO.	(b) ITEM NO.
						1-5	6-20	21-50	51-100		
PO 00185	4310-900-2317	GASKET: INTAKE VALVE U48 (11568) (INITIALLY LISTED AS INDEX NO. 00178)	EA							C10	8
O 00186	5305-156-2357	SCREW, MACHINE: INTAKE VALVE SEAT, NO. 8-32 THD SIZE, 7/16 IN. LG U81 (11568)	EA	1	1					C10	3
X1 00187		SEAT, INTAKE VALVE U66A (11568)	EA	1	1					C10	4
PO 00188	4310-893-5126	SPRING, COMPRESSOR VALVE U71 (11568) (INITIALLY LISTED AS INDEX NO. 00181)	EA							C10	6
PO 00189	4310-911-6609	VALVE ASSEMBLY, INTAKE: LOW PRESSURE Z121A (11568)	EA	1	2	*	*	*	2		
X1 00190		CAGE, INTAKE VALVE U67A (11568)	EA	1	2					C10	7
X1 00191	4310-893-5124	DISC, COMPRESSOR VALVE U70A (11568)	EA	1	2					C10	5
PO 00192	4310-900-2317	GASKET: INTAKE VALVE U48 (11568) (INITIALLY LISTED AS INDEX No. 00178)	EA		6					C10	8
O 00193	5305-156-2357	SCREW, MACHINIE: INTAKE VALVE SEAT, NO. 8-32 THD SIZE 7/16 IN., LG U81 (11568)	EA	1	2					C10	3
X1 00194		SEAT, INTAKE VALVE U66A (11568)	EA	1	2					C10	4
PO 00195	4310-893-5126	SPRING, COMPRESSOR VALVE U71 (11568) (INITIALLY LISTED AS INDEX NO. 00181)	EA		2					C10	6

(1) SMR CODE INDEX NO.	(2) FEDERAL STOCK NUMBER	(3) DESCRIPTION Reference Number & Mfr Code	(4) UNIT OF ISSUE	(5) QTY INC IN UNIT PACK	(6) QTY INC IN UNIT	(7) 15-DAY ORGANIZATIONAL MAINTENANCE ALW				(8) ILLUS- TRATION	
						(a)	(b)	(c)	(d)	(a)	(b)
						1-5	6-20	21-50	51-100	FIG NO.	ITEM NO.
00196		5006 - LUBRICATION SYSTEM									
O 00197	4730-018-4201	CAP, PIPE: OIL DRAIN, 3/8 IN. PIPE	EA	1	1					C9	27
X20 00199		ELEMENT, CRANKCASE BREATHER A100-3 (11568)	EA	1	1					C9	29
X20 00200		GAGE, OIL LEVEL 0712-000017 (24981)	EA	1	1					C9	17
O 00203	4730-208-1218	NIPPLE, PIPE: OIL DRAIN, 3/8 IN. PIPE, 6 IN. LG	EA	1	1					C9	26
O 00205	4730-278-3390	PLUG, PIPE: OIL FILL, 3/8 IN. M485 (11568)	EA	1	1					C9	39
00208		5007 - COMPRESSOR DRIVE									
P O 00209	3030-251-3941	BELTS, V, MATCHED SET 4L580-2 (81300) (2 BELTS PER SET)	EA	1	1	*	*	2	2	C8	1
X20 00210		FLYWHEEL: COMPRESSOR NR4-7AL (11568)	EA	1	1					C9	8
X20 00211		GUARD ASSEMBLY, BELT Z318 (11568)	EA	1	1						
X20 00212	4310-874-0350	BRACKET: BELT GUARD Z247-4 (11568)	EA	1	1					C11	11
X20 00213	4310-874-0350	BRACKET: BELT GUARD Z247-2 (11568)	EA	1	1					C11	6
X20 00214		BRACKET: BELT GUARD M809 (11568)	EA	1	1					C11	4
X20 00215	4310-837-1377	GUARD, BELT M501 (11568)	EA	1	1					C11	5

(1) SMR CODE	(2) FEDERAL STOCK NUMBER	(3) DESCRIPTION	(4) UNIT OF ISSUE	(5) QTY INC IN UNIT PACK	(6) QTY INC IN UNIT	(7) 15-DAY ORGANIZATIONAL MAINTENANCE ALW				(8) ILLUS- TRATION					
										(a)	(b)	(c)	(d)	(a)	(b)
										1-5	6-20	21-50	51-100	FIG NO.	ITEM NO.
INDEX NO.		Reference Number & MFR Code	Usable on Code												
O 00216	5310-176-8141	NUT, PLAIN, HEXAGON: BRACKET, 5/16-18 THD SIZE AN340-516 (88044)	EA	1	3					C11	1				
O 00217	5310-194-7307	WASHER, FLAT: BRACKET MTG,	EA	1	3					C11	3				
O 00218	5310-010-3320	WASHER, LOCK: BRACKET MTG, 5/16 IN, SCREW SIZE MS35338-7 (96906)	EA	1	3					C11	2				
O 00219	5315-050-5795	KEY, MACHINE; FLYWHEEL MTG, 1/4 IN, 90 .1 3/2 IN. LG 48 (11568)	EA	1	1					C9	28				
O 00220	5310-011-3739	NUT, EXPLAIN, HEXAGON: BELT GUARD MTG, 1/4-20 THD SIZE M907A (11568)	EA	1	1					C11	7				
O 00221	5305-639-8115	SCREW, CAP, HEXAGON HEAD: BELT GUARD MTG, 1/4-20 THD SIZE, 3/4 IN. LG M696 (11568)	EA	1	2					C11	9				
O 00222	5305-012-5843	SETSCREW, FLYWHEEL MTG, 3/8-16 THD SIZE 3/8 IN. LG M568 (11568)	EA	1	1					C9	9				
O 00223	5310-010-3339	WASHER, FLAT; BELT GUARD MTG, 1/4 IN. SCREW SIZE M905A (11568)	EA	1	2					C11	10				
O 00224	5310-012-1753	WASHER, LOCK: BELT BRACKET MTG 1/4 IN. SCREW SIZE M919A (11568)	EA	1	4					C11	8				
00225 X20		5008- AIR INTAKE MUFFLER ELEMENT, INTAKE: FRONT	EA	1	2					C10					
00226		2129C (11568)													
P O 00227	4310-911-6281	FILTER ELEMENT, INTAKE: FRONT B22A (11568)	EA	1	2	*	2	2	2	C10	12				

(1) SMR CODE	(2) FEDERAL STOCK NUMBER	(3) DESCRIPTION	(4) UNIT OF ISSUE	(5) QTY INC IN UNIT PACK	(6) QTY INC IN UNIT	(7) 15-DAY ORGANIZATIONAL MAINTENANCE ALW				(8) ILLUS- TRATION					
										(a)	(b)	(c)	(d)	(a)	(b)
						INDEX NO.	Reference Number & Mfr Code	Usable on Code	(a) 1-5	(b) 6-20	(c) 21-50	(d) 51-100	FIG NO.	ITEM NO.	
P O 00228	4310-911-6282	FILTER ELEMENT, INTAKE: REAR 6228 (11568)	EA	1	2	*	2	2	2	C10	11				
X1 00229		BODY, INTAKE: AIR FILTER B57A (11568)	EA	1	2					C10	10				
00230		509 - UNLOADER SYSTEM COMPONENTS													
P O 00231	4310-870-5911	VALVE, HIGH PRESSURE: INTERSTAGE SAFETY 267-75 (75336)	EA	1	1	*	*	*	*	C10	13				
P O 00232	4820-844-8636	VALVE, SAFETY RELIEF 206-200 (75336)	EA	1	1	*	*	*	*	C8	12				
00233		5010 - COMPRESSOR COOLING													
X20 00234		AFTERCOOLER ASSEMBLY: COMPRESSOR A45 (11568)	EA	1	1					C10	23				
O 00235	4730-050-4118	ELBOW, PIPE TO TUBE: INTERCOOLER LINES 1/2 IN. TUBE, 3/8 IN. PIPE, 90 DEGREE M515 (11568)	EA	1	4					C10	21				
X20 00236		INTERCOOLER ASSEMBLY: COMPRESSOR A12 (11568)	EA	1	1					C10	30				
O 00237	4730-237-1918	NUT, TUBE COUPLING: INTERCOOLER, COMPRESSION 1/2 IN. TUBE M594 (11568)	EA	1	4					C10	22				
00238		5014 - AIR RECEIVER													
O 00239	4730-818-6896	ELBOW, PIPE: CHECK VALVE LINE, 1/2 IN. 90 DEGREE, STREET M9828 (11568)	EA	1	1					C8	23				
O 00241	4730-426-8352	ELBOW, PIPE TO TUBE: CHECK VALVE TO INTERCOOLER LINE 5/8 IN. TUBE, 1/2 IN. PIPE, 90 DEGREE M808 (11568)	EA	1	1					C8	26				
O 00242	4730-042-9452	NIPPLE, PIPE: CHECK VALVE LINE, 1/2 IN. CLOSE M10278 (11568)	EA	1	2					C8	24				

(1) SMR CODE	(2) FEDERAL STOCK NUMBER	(3) DESCRIPTION	(4) UNIT OF ISSUE	(5) QTY INC IN UNIT PACK	(6) QTY INC IN UNIT	(7) 15-DAY ORGANIZATIONAL MAINTENANCE ALW				(8) ILLUS- TRATION	
						(a)	(b)	(c)	(d)	(a)	(b)
						1-5	6-20	21-50	51-100	FIG NO.	ITEM NO.
X1 00243		RECEIVER, AIR; 60 GALLON P2761B (11568)	EA	1	1					C8	22
O 00244	4730-287-0022	PLUG, PIPE: AIR RECEIVER, 1/2 IN. M569 (11568)	EA	1	2					C8	21
X20 00245		TUBE, RELEASE VALVE 44-7 (11568)	EA	1						C8	11
P O 00246	4310-532-7791	VALVE, CHECK: COMPRESSOR 2208 (11568)	EA	1	1	*	*	*	*	C8	25
X1 00247		BODY: CHECK VALVE M4498 (11568)	EA	1	1					C12	7
X1 1 00248		CAP: CHECK VALVE M450A (11568)		EA	1	1					C12
X1 5 00249		DISC: CHECK VALVE		EA	1	1					C12
O 00250	5310-176-8142	H41P (11568) NUT, PLAIN, HEXAGON: DISC MTG, BRAS, 1/4-20 THD SIZE AN33584 (88044)	EA	1	1					C12	3
X1 00251		PLUNGER: CHECK VALVE M454 (11568)	EA	1	1					C12	4
O 00252	5305-290-3051	SCREW, MACHINE: DISC MTG, BRASS, 1/4-20 THD SIZE, 5/8 IN. LG. AN515UB416-10 (88044)	EA	1	1					C12	6
P O 00253	4310-875-4108	SPRING: CHECK VALVE M453 (11568)	EA	1	1	*	*	2	2	C12	2
O 00254		5015 - AIR DISCHARGE SYSTEM									
O 00255	4730-202-6669	BUSHING, PIP: VALVE TO AIR HOSE, 1/2 TO 1/4 IN. PIPE M554 (11568)	EA	1	1					C8	14
X20 00256	4310-874-3181	COCK, DRAIN: AIR RECEIVER M629 (11568)	EA	1	1					C8	20

(1) SMR CODE INDEX NO.	(2) FEDERAL STOCK NUMBER	(3) DESCRIPTION Reference Number & Mfr Code Usable on Code		(4) UNIT OF ISSUE	(5) QTY INC IN UNIT PACK	(6) QTY INC IN UNIT	(7) 15-DAY ORGANIZATIONAL MAINTENANCE ALW				(8) ILLUS- TRATION	
							(a)	(b)	(c)	(d)	(a)	(b)
							1-5	6-20	21-50	51-100	FIG NO.	ITEM NO.
O 00257	4730-092-9452	NIPLE, PIPE: GLOBE VALVE TO TANK, 1/2 IN. GLOBE M10278 (11568)		EA	1	1					C8	16
P O 00258	4820-274-7389	VALVE, GLOBE: HOSE LINE 592-14 (86107)		EA	1	1	*	*	*	*	C8	15

(1) SMR CODE	(2) FEDERAL STOCK NUMBER	(3) DESCRIPTION Reference Number & MFR Code Usable On Code	(4) UNIT OF ISSUE	(5) QTY INC IN	(6) QTY INC	(7) 30-DAY DS MAINT ALLOWANCE			(8) 30-DAY GS MAINT ALLOWANCE			(9) 1-YR ALW PER 100	(10) DEPO T MAIN T ALW- PER 100	(11) ILLUS- TRATION (a) (b)		
						(a)	(b)	(c)	(a)	(b)	(c)	EQUIP CNTG	EQUIF	FIG NO.	ITEM NO.	
						1-20	21-50	51-100	1-20	21-50	51-100					
00001		SECTION V - REPAIR PARTS FOR DS, GS, ----- AND DEPOT MAINTENANCE														
00001A		GROUP 22 - BODY, CHASSIS OR HULL AND ----- ACCESSORY ITEMS														
00002		2202 - ACCESSORY ITEMS														
P O 00003	4910-030-2365	GAGE, TIRE PRESSURE G1506 (81348)	EA	1	1	*	*	2	*	*	2	10	10	C2		
X1 00004		CHAIN, LINK: INFLATOR TO PRODE 11 LINKS EACH 1507 (94894)	EA	1	2									C2	2	
X1 00005		COUPLER: INFLATOR 61F1-71S (94894)	EA	1	1									C2	7	
X1 00006	6685-910-8335	GAGE, PRESSURE, DIAL: JUMBO PROBE 1506 (94894)	EA	1	1									C2	6	
X1 00007		PLUG, JUMBO PROBE 729 (94894)	EA	1	1									C2	8	
X1 00008		HOSE, WHIP: INFLATOR 506-32 (94894)	EA	1	1									C2	3	
X1 00009	4910-806-8185	INFLATOR-GAGE, PNEUMATIC 506 (94894)	EA	1	1									C2	4	
X1 00010		KEY RING: CHAIN TO INFLATOR 1508 (94894)	EA	1	1									C2	9	
X1 00011		KEY RING: PROBE TO CHAIN 1059 (94894)	EA	1	2									C2	5	
X1 00012		PROBE, STANDARD: INFLATOR 5004 (94894)	EA	1	1									C1	1	
X1 00013		PLUG: STANDARD PLUG 729 (94894)	EA	1	1									C2	8	

(1) SMR CODE	(2) FEDERAL STOCK NUMBER	(3) DESCRIPTION Reference Number & MFR Code	(4) UNIT OF ISSUE	(5) QTY INC IN UNIT PACK	(6) QTY INC IN UNIT	(7) 30-DAY DS MAINT ALLOWANCE			(8) 30-DAY GS MAINT ALLOWANCE			(9) 1-YR ALW PER 100 EQUIP CNTGCTY	(10) DEPOT MAINT ALW- PER 100 EQUIP	(11) ILLUS- TRATION	
						(a)	(b)	(c)	(a)	(b)	(c)			(a)	(b)
						1-20	21-50	51-100	1-20	21-50	51-100			FIG NO.	ITEM NO.
P O 00014	4310-873-1767	HOSE ASSEMBLY, AIR: TANK TO GAGE, 25 FT LG 2538 (11568)	EA	1	1	*	*	2	*	*	2	10	10	C1	
X20 00015	4730-595-1721	ADAPTER, STRAIGHT, PIPE TO HOSE: AIR HOSE 6362 (53477)	EA	1	1									C1	6
X20 00016		COUPLING: HOSE TO TANK M3413 (72219)	EA	1	1									C1	1
X20 00017		FERRULE, HOSE DD (53477)	EA	1	2									C1	4
X1 00018		HOSE, RUBBER: AIR HOSE 25 FT 11613 (78394)	EA	1	1									C1	5
X20 00019		NUT, UNION: HOSE FERRULE C1439 (72219)	EA	1	1									C1	2
X20 00020		STEM, HOSE J2807 (72219)	EA	1	1									C1	3
00021		2210 - DATA PLATES													
X2F 00022		PLATE, IDENTIFICATION M739 (11)	EA	1	1										
F 00023	5305-253-5612	SCREW, DRIVE: PLATE MTG, NO. 2, 1/4 IN. LG AN535-2-4 (11568)	EA	1	4										
00024		GROUP 40 - ELECTRIC MOTOR													
00025		4000 - MOTOR													
P O 00026	6105-849-2300	MOTOR, ELECTRI: 2 HP 2HP148FR (23452)	A	EA	1	1	*	*	*	*	*	5	5	C8	4
P O 00027		MOTOR, ELECTRIC 4100121101 (23452)	B	EA	1	1	*	*	*	*	*	3	3	C8	4
O 00028	5310-638-3899	NUT, PLAIN, HEXAGON: MOTOR MTG, 3/8-16 UNC M909A (11568)	EA	1	4									C8	17

(1) SMR CODE	(2) FEDERAL STOCK NUMBER	(3) DESCRIPTION Reference Number & MFR Code		(4) UNIT OF ISSUE	(5) QTY INC IN UNIT PACK	(6) QTY INC IN UNIT	(7) 30-DAY DS MAINT ALLOWANCE			(8) 30-DAY GS MAINT ALLOWANCE			(9) 1-YR ALW PER 100 EQUIP CNTGCTY	(10) DEPOT MAINT ALW- PER 100 EQUIP	(11) ILLUS- TRATION	
							(a)	(b)	(c)	(a)	(b)	(c)			(a)	(b)
							1-20	21-50	51-100	1-20	21-50	51-100			FIG NO.	ITEM NO.
O 00029	5305-186-7448	SCREW, CAP, HEXAGON HEAD: MOTOR MTG, 3/8-16 SIZE, 1 1/4 IN. LG M456 (11568)		EA	1	4									C8	5
O 00030	5310-018-7076	WASHER, FLAT: MOTOR MTG, 3/8 IN. SCREW SIZE SE5-88 (11568)		EA	1	4									C8	7
O 00031	5310-010-3321	WASHER, LOCK: MOTOR MTG, MTG, 3/8 IN. SCREW SIZE M91H (11568)		EA	1	12									C8	6
00032		4001 - ROTOR ASSEMBLY														
X1 00033		ROTOR ASSEMBLY, MOTOR 108550-902 (23452) (COMPONENT OF MOTOR, STOCK NO. 6105-849-2300, GROUP 4000)		A	EA	1	1								C3	15
X1 00034		ROTOR ASSEMBLY, MOTOR 108339-814 (23452) (COMPONENT OF MOTOR, STOCK NO. (23452)4100121101, GROUP 4000)		B	EA	1	1								C4	8
X1 00035		SHAFT, ROTOR 10426-104 (23452)		B	EA	1	1									
00036		4002 - STATOR ASSEMBLY														
X1 00037		FRAME ASSEMBLY, MOTOR 14430-901 (23452) (COMPONENT OF MOTOR, STOCK NO. 6105-849-2300, GROUP 4000)		A	EA	1	1								C3	13
X1 00038		FRAME, ELECTRIC MOTOR 10323-101 (23452) (COMPONENT OF MOTOR, STOCK NO. (23452)4100121101, GROUP 4000)		B	EA	1	1								C4	6
X1 00039		CORE, STATOR 105501-914 (23452)		B	EA	1	1								C4	7

(1) SMR CODE	(2) FEDERAL STOCK NUMBER	(3) DESCRIPTION Reference Number & Mfr Code	(4) UNIT OF ISSUE	(5) QTY INC IN UNIT	(6) QTY INC IN UNIT	(7) 30-DAY DS MAINT ALLOWANCE			(8) 30-DAY GS MAINT ALLOWANCE			(9) 1-YR ALW PER 100 EQUIP CNTGCTY	(10) DEPOT MAINT ALW- PER 100 EQUIP	(11) ILLUS- TRATION		
						(a)	(b)	(c)	(a)	(b)	(c)			(a)	(b)	
						1-20	21-50	51-100	1-20	21-50	51-100			FIG NO.	ITEM NO.	
X1 00040		WINDING, STATOR 147430-100 (23452)	B	EA	1	1									C4	5
00041		4004 - VENTILATING SYSTEM														
X2F 00042		BAFFLE: ELECTRIC MOTOR FAN 110000-101 (23452)	A	EA	1	2									C3	8
X2F 00043		BAFFLE: ELECTRIC MOTOR COOLING 110000-101 (23452)	B	EA	1	1									C4	9
X2F 00044		BAFFLE: ELECTRIC MOTOR COOLING 110076-101 (23452)	B	EA	1	1									C4	3
00045		405 - FRAME SUPPORT AND HOUSING														
P F 00046	3110-937-3853	BEARING, BALL, ANNULAR: COMMUTATOR END BELL 275092-104 (23452)	A	EA	1	1	2	2	3	2	2	3	40	40	C4	5
P F 00047	3110-937-3853	BEARING, BALL, ANNULAR: COMMUTATOR AND BELL 275092-104 (23452) (SEE INDEX NO. 046 FOR STACKAGE ALLOWANCES)	B	EA	1	1									C4	18
P F 00048	3110-840-5983	BEARING, BALL, ANNULAR: DRIVE END BELL 275095-101 (23452)	A	EA	1	1	*	2	2	*	2	2	20	20	C3	14
P F 00049		BEARING, BALL, ANNULAR: DRIVE END 275095-105 (23452)	B	EA	1	1	*	2	2	*	2	2	20	20	C4	11
X2F 00050		BOLT, THRU: END BELL MTG 11204-101 (23452)	A	EA	1	4									C3	1
X2F 00051		BOLT, THRU: END BELL MTG 11204-108 (23452)	B	EA	1	4									C4	16
X2F 00052		CAP, END: ELECTRIC MOTOR END BELL 292063-101 (23452)	A	EA	1	1									C3	2
X2F 00053		END BELL: ELECTRIC, MOTOR, COMMUTATOR END 103031-104 (23452)	A	EA	1	1									C3	3

(1) SMR CODE	(2) FEDERAL STOCK NUMBER	(3) DESCRIPTION Reference Number & MFR Code		(4) UNIT OF ISSUE	(5) QTY INC IN UNIT	(6) QTY INC IN UNIT	(7) 30-DAY DS MAINT ALLOWANCE			(8) 30-DAY GS MAINT ALLOWANCE			(9) 1-YR ALW PER 100 EQUIP CNTGCTY	(10) DEPOT MAINT ALW- PER 100 EQUIP	(11) ILLUS- TRATION	
							(a)	(b)	(c)	(a)	(b)	(c)			(a)	(b)
							1-20	21-50	51-100	1-20	21-50	51-100			FIG NO.	ITEM NO.
X2F 00054		END BELL: ELECTRIC MOTOR, COMMUTATOR END 10356-106 (23452)	B	EA	1	1									C4	4
X2F 00055		END BELL: ELECTRIC MOTOR, DRIVE 103022-105 (23452)	A	EA	1	1									C3	7
X2F 00056		END BELL: ELECTRIC MOTOR, DRIVE END 10322-105 (23452)	B	EA	1	1									C4	10
F 00057	5310-012-0375	NUT, PLAIN, HEXAGON: END BELL MTG, 1/4-20 THD SIZE 275514-110 (23452)	A	EA	1	4									C3	6
F 00058	5310-012-0375	NUT, PLAIN, HEXAGON: END BELL MTG, 1/4-20 THD SIZE 275514-110 (23452)	B	EA	1	1									C4	12
X2F 00059		PLUG, COMMUTATOR, END BELL 11004-101 (23452)	B	EA	1	4									C4	10
X2F 00060		WASHER, SPRING TENSION COMMUTATOR END BEARING 110002-103 (23452)	A	EA	1	1									C3	4
X2F 00061		WASHER, SPRING TENSION: COMMUTATOR END BEARING 11002-103 (23452)	B	EA	1	1									C4	17
00062		4006 - STARTING AND PROTECTING DEVICES														
P F 00063		CAPACITOR: ELECTRI MOTOR START 275462 (23452)	B	EA	1	1									C4	15
X2F 00064		MECHANISM, CENTRIFUGAL: ELECTRIC MOTOR START 110034-902 (23452)	B	EA	1	1									C4	2
P F 00065		SWITCH, CENTRIFUGAL: ELECTRICAL MOTOR START 110209-901 (23452)	B	EA	1	1	*	*	2	*	*	2	10	10	C4	1
00066		4007 - DRIVE COMPONENTS														
O 00067	5315-526-9637	KEY, MACHINE: PULLEY, 3/16 IN. SQ, 11/4 IN. LG T8 (11568)		EA	1	1									C8	3

(1) SMR CODE	(2) FEDERAL STOCK NUMBER	(3) DESCRIPTION Reference Number & MFR Code Usable On Code		(4) UNIT OF ISSUE	(5) QTY INC IN UNIT PACK	(6) QTY INC IN UNIT	(7) 30-DAY DS MAINT ALLOWANCE			(8) 30-DAY GS MAINT ALLOWANCE			(9) 1-YR ALW PER 100 EQUIP CNTGCTY	(10) DEPOT MAINT ALW- PER 100 EQUIP	(11) ILLUS- TRATION		
							(a)	(b)	(c)	(a)	(b)	(c)			(a)	(b)	
							1-20	21-50	51-100	1-20	21-50	51-100			FIG NO.	ITEM NO.	
X20 00068	3020-837-1270	PULLEY, GROOVE: ELECTRIC MOTOR M498 (11568)		EA	1	1										C8	2
0 00069	5305-010-2728	SETSRCEW: PULLEY MTG, 3/8-16 THD SIZE, 3/8 IN. LG M568 (11568)		EA	1	1										C8	27
00070		4010 - MASTER CONTROL ASSEMBLY															
P O 00071	4310-994-8886	ELEMENT, HEATER: STARTER SWITCH H43 (23826)		B	EA	1	2	*	2	2	*	2	2	20	20	C7	5
P O 00072	4310-378-9681	HEATING ELEMENT, ELECTRICAL: STARTER SWITCH H30 (21826)		A	EA	1	2	*	2	2	*	2	2	20	20	C6	5
P O 00073	4310-019-4189	HEATER, THERMAL RELEASE: STARTER SWITCH H24 (23826)		A	EA	1	2	*	2	2	*	2	2	20	20	C6	8
P O 00074	6110-802-6784	HEATER, THERMAL RELEASE: STARTER SWITCH H35 (23826)		B	EA	1	2	*	2	2	*	2	2	20	20		
O 00075	5310-011-3739	NUT, PLAIN, HEXAGON: STARTER MTG, 1/4-20 THD SIZE M907A (11568)		EA	1	2											
O 00076	5305-639-8115	SCREW, CAP, HEXAGON HEAD: STARTER MTG, 1/4-20 THD SIZE, 3/4 IN. LG M696 (11568)		EA	1	4											
P O 00077	6110-891-0905	STARTER, COMPRESSOR: ELECTRIC MOTOR 14CA32BCX26 (23826)		A	EA	1	1	*	*	*	*	*	*	*	5	5	
X1 00078		ARM ASSEMBLY, CROSS: STARTER 050937-10 (23826)		A	EA	1	1									C6	3
X1 00079		CONTACT BOARD: STARTER D50915-13 (23826)		A	EA	1	1									C6	1
X1 00080		MAGNET AND ARMATURE ASSEMBLY: STARTER D16577-1 (23826)		A	EA	1	1									C6	6
X1 00081	5945-910-4717	RELAY: THERMAL OVERLOAD 480B11A (23826)		A	EA	1	1									C6	4

(1) SMR CODE	(2) FEDERAL STOCK NUMBER	(3) DESCRIPTION Reference Number & Mfr Code	(4) UNIT OF ISSUE	(5) QTY INC IN UNIT PACK	(6) QTY INC IN UNIT	(7) 30-DAY DS MAINT ALLOWANCE			(8) 30-DAY GS MAINT ALLOWANCE			(9) 1-YR ALW PER 100 EQUIP CNTGCTY	(10) DEPOT MAINT ALW- PER 100 EQUIP	(11) ILLUS- TRATION		
						(a)	(b)	(c)	(a)	(b)	(c)			(a)	(b)	
						1-20	21-50	51-100	1-20	21-50	51-100			FIG NO.	ITEM NO.	
X1 00082		RELAY: THERMAL OVERLOAD, QUICK TRIP 480B12A (23826)	A	EA	1	1									C6	7
P O 00083		STARTER, COMPRESSOR: ELECTRIC MOTOR 14DA12BAX26 (23826)	B	EA	1	1	*	*	*	*	*	*	5	5	C7	
X1 00084		ARM ASSEMBLY, CROSS: STARTER D550937-10 (23826)	B	EA	1	1									C7	3
X1 00085		CONTACT BOARD: STARTER D50912-13 (23826)	B	EA	1	1									C7	1
X1 00086		MAGNET AND ARMATURE ASSEMBLY: STARTER D16577-1 (23826)	B	EA	1	1									C7	4
X1 00087	5945-910-4717	RELAY: THERMAL OVERLOAD 480B11A (23826)	B	EA	1	1									C7	6
P O 00088	5930-501-0059	SWITCH, PRESSURE: 140 TO 175 PSI HU1 (23826)		EA	1	1	*	*	2	*	*	2	10	10	C5	
X1 00089		BAR, TOP D9935-1 (23826)		EA	1	1									C5	4
X1 00090		CONTACT BOARD: PRESSURE SWITCH D1673-1 (23826)		EA	1	1									C5	1
X1 00091		COVER, ENCLOSURE: PRESSURE SWITCH D9943-10 (23826)		EA	1	1									C5	7
X1 00092	5930-772-6081	DIAPHRAGM, ELECTRICAL D7878-1 (23826)		EA	1	1									C5	9
X1 00093		DIAPHRAGM, NEOPREME D274-1 (23826)		EA	1	1									C5	10
X1 00094	6110-820-0708	EQUALIZER: SPRING D276-1 (23826)		EA	1	1									C5	2
X1 00095		FRAME, WITH KNIFE EDGE BEARINGS D9078-1 (23826)		EA	1	1									C5	14
X1 00096		LEVER: PRESSURE SWITCH D1366 (23826)		EA	1	1									C5	15

(1) SMR CODE	(2) FEDERAL STOCK NUMBER	(3) DESCRIPTION Reference Number & Mfr Code Usable On Code		(4) UNIT OF ISSUE	(5) QTY INC IN UNIT PACK	(6) QTY INC IN UNIT	(7) 30-DAY DS MAINT ALLOWANCE			(8) 30-DAY GS MAINT ALLOWANCE			(9) 1-YR ALW PER 100 EQUIP CNTGCTY	(10) DEPOT MAINT ALW- PER 100 EQUIP	(11) ILLUS- TRATION	
							(a) 1-20	(b) 21-50	(c) 51-100	(a) 1-20	(b) 21-50	(c) 51-100			(a) FIG NO.	(b) ITEM NO.
X1 00097		SCREW, DIFFERENTIAL AND NUT D9096-1 (23826)		EA	1	1									C5	6
X1 00098	5305-808-3109	SCREW, PRESSURE ADJUSTING D323-1 (23826)		EA	1	1									C5	5
X1 00099	5930-530-4936	SPRING, HELICAL, COMPRESSION: PRESSURE SWITCH D467-1 (23826)		EA	1	1									C5	8
X1 00100	6110-887-5001	STIRRUP: DIAPHRAGM PLATE D10456-1 (23826)		EA	1	1									C5	11
X1 00101	5930-756-9452	SPRING, HELICAL, EXTENSION: PRESSURE SWITCH D357-1 (23826)		EA	1	1									C5	12
X1 00102	5340-805-0825	SPRING, MAIN: PRESSURE SWITCH D10037-1 (23826)		EA	1	1									C5	3
X1 00103	6110-887-5005	TOGGLE BAR: PRESSURE SWITCH D317-2 (23826)		EA	1	1									C5	13
O 00104	5310-010-3339	WASHER, FLAT: STARTER MTG, 1/4 IN. SCREW SIZE M905A (11568)		EA	1	4										
O 00105	5310-011-4604	WASHER, LOCK: STARTER MTG, 1/4 IN. SCREW SIZE M919A (11568)		EA	1	4										
00106		4012 - SWITCHES														
P O 00107	5930-241-8921	SWITCH, TOGGLE: STARTER SWITCH 2DA25-73 (73559)	A	EA	1	1	*	2	2	*	2	2	20	20	C6	2
P O 00108	5930-241-8921	SWITCH, TOGGLE: STARTER SWITCH 2DA25-73 (73559) (SEE INDEX NO. 107 OR STOCKAGE ALLOWANCES)	B	EA	1	1									C7	2
00109		4014 - TERMINAL BOXES, PANELS, WIRING														
X1 00110		BOX, BOTTOM: ELECTRIC MOTOR, CONDUIT 110202-901 (23452) (COMPONENT OF MOTOR, STOCK NO. 6105-849-2300, GROUP 4000)	A	EA	1	1									C3	12

(1) SMR CODE INDEX NO.	(2) FEDERAL STOCK NUMBER	(3) DESCRIPTION Reference Number & Mfr Code Usable On Code		(4) UNIT OF ISSUE	(5) QTY INC IN UNIT PACK	(6) QTY INC IN UNIT	(7) 30-DAY DS MAINT ALLOWANCE			(8) 30-DAY GS MAINT ALLOWANCE			(9) 1-YR ALW PER 100 EQUIP CNTGCTY	(10) DEPOT MAINT ALW- PER 100 EQUIP	(11) ILLUS- TRATION	
							(a)	(b)	(c)	(a)	(b)	(c)			(a)	(b)
							1-20	21-50	51-100	1-20	21-50	51-100			FIG NO.	ITEM NO.
X1 00111		BOX, BOTTOM: ELECTRIC MOTOR, CONDUIT 110202-901 (23452) (COMPONENT OF MOTOR, STOCK NO. (23452) 4100121101, GROUP 4000)	B	EA	1	1									C4	13
X1 00112		COVER, CONDUIT: MOTOR 110043-101 (23452) (COMPONENT OF MOTOR, STOCK NO. 6105-849-2300, GROUP 4000)	A	EA	1	1									C3	10
X1 00113		COVER, CONDUIT BOX: ELECTRIC MOTOR 110043-101 (23452) (COMPONENT OF MOTOR, STOCK NO. (23452) 410021101, GROUP 4000)	B	EA	1	1									C3	10
O 00114	5305-988-1723	SCREW, MACHINE: CONDUIT BOX MTG, 1/4-20 THD SIZE 1/2 IN. LG 110229-106 (23452)	A	EA	1	2									C3	11
O 00115	5305-988-1723	SCREW, MACHINE: CONDUIT BOX MTG, 1/4-20 THD SIZE, 1/2 IN. LG 110229-106 (23452)	B	EA	1	2									C3	11
O 00116	5305-071-2091	SCREW, MACHINE: CONDUIT COVER MTG, 1/4-20 THD SIZE, 3 IN. LG 275150-518 (23452)	A	EA	1	2									C3	9
O 00117	5305-071-2091	SCREW, MACHINE: CONDUIT COVER MTG, 1/4-20 THD SIZE 3 IN. LG 275150-518 (23452)	B	EA	1	2									C4	14
00118		GROUP 47 - GAGES (NON-ELECTRICAL)														
00119		4702 - GAGES														
P O	6685-00-425- 2373	GAGE, PRESSURE, DIAL: 1/4, 0 TO 300 POUND D56755 (61349)														

(1) SMR CODE	(2) FEDERAL STOCK NUMBER	(3) DESCRIPTION Reference Number & Mfr Code	(4) UNIT OF ISSUE	(5) QTY INC IN UNIT	(6) QTY INC IN UNIT	(7) 30-DAY DS MAINT ALLOWANCE			(8) 30-DAY GS MAINT ALLOWANCE			(9) 1-YR ALW PER 100 EQUIP CNTGCTY	(10) DEPOT MAINT ALW- PER 100 EQUIP	(11) ILLUS- TRATION		
						(a)	(b)	(c)	(a)	(b)	(c)			(a)	(b)	
						1-20	21-50	51-100	1-20	21-50	51-100			FIG NO.	ITEM NO.	
00121		GROUP 50 - PNEUMATIC EQUIPMENT														
00122		5000 - AIR COMPRESSOR ASSEMBLY														
O 00123	5306-298-4781	SCREW, HEXAGON HEAD: COMPRESSOR MTG, 5/16-18 THD SIZE 1 1/4 IN LG.	EA	1	4										C8	8
X20 R 00124		COMPRESSOR ASSEMBLY, AIR CAW (11568)	EA	1	1										C8	10
O 00125	5310-012-0376	NUT, PLAIN, HEXAGON: COMPRESSOR MTG, 5/16-18 THD SIZE M935A (11568)	EA	1	8										C8	19
O 00126	5310-010-3331	WASHER, FLAT: COMPRESSOR MTG, 3/8 IN. SCREW SIZE	EA	1	4										C8	9
O 00127	5310-514-6674	WASHER, LOCK: COMPRESSOR MTG, 5/16 IN. SCREW SIZE M911A (11568)	EA	1	8										C8	18
00128		5001 - CRANKCASE, BLOCK, CYLINDER HEAD														
O 00129	5306-206-5613	BOLT, MACHINE: CYLINDER HEAD MTG, 5/16-18 THD SIZE 1 1/4 IN. LG M457 (11568)	EA	1	8										C10	9
F 00130	5306-638-1459	BOLT, MACHINE: CYLINDER MTG, 5/16-18 THD SIZE 3/4 IN. LG M567 (11568)	EA	1	12										C10	26
X2F 00131		COVER, CRANKCASE C14B (11568)	EA	1	1										C9	33
X1 00132		CRANKCASE, COMPRESSOR B9 (11568)	EA	1	1										C9	40
X2F 00133		CYLINDER, HIGH PRESSURE C6B (11568)	EA	1	1										C10	25
X2F 00134		CYLINDER, LOW PRESSURE A6A (11568)	EA	1	2										C10	28
X2F 00135		SHIM: CRANKCASE COVER, .005 IN. THK C30A (11568) (AS REQUIRED)	EA												C9	35

(1) SMR CODE	(2) FEDERAL STOCK NUMBER	(3) DESCRIPTION Reference Number & Mfr Code	(4) UNIT OF ISSUE	(5) QTY INC IN UNIT PACK	(6) QTY INC IN UNIT	(7) 30-DAY DS MAINT ALLOWANCE			(8) 30-DAY GS MAINT ALLOWANCE			(9) 1-YR ALW PER 100 EQUIP CNTGCTY	(10) DEPOT MAINT ALW- PER 100 EQUIP	(11) ILLUS- TRATION	
						(a)	(b)	(c)	(a)	(b)	(c)			(a)	(b)
						1-20	21-50	51-100	1-20	21-50	51-100			FIG NO.	ITEM NO.
X2F 00136	4310-900-2340	SHIM: CRANKCASE COVER, .010 IN. THK C308 (11568) (AS REQUIRED)	EA	1	1									C9	35
X2F 00137		GASKET: CRANKCASE COVER, .030 IN. THK C30 (11568)	EA	1	1									C9	34
P F 00138	4130-900-2328	GASKET: CYLINDER FLANGE A29 (11568)	EA	1	3	*	2	2	2	2	3	30	30	C10	27
X20 00139		GASKET: CYLINDER HEAD, HIGH PRESSURE C31 (11568)	EA	1	1									C10	24
P O 00140	4310-901-0359	GASKET: CYLINDER HEAD, LOW PRESSURE B31 (11568)	EA	1	2	*	*	2	*	*	2	10	20	C10	29
X20 00141		HEAD, CYLINDER: HIGH PRESSURE C1 (11568)	EA	1	1									C10	20
X20 00142		HEAD CYLINDER: LOW PRESSURE B1A (11568)	EA	1	2									C10	9
00143		5002 - CRANKSHAFT													
P F 00144	3110-926-1379	CONE AND ROLLERS, TAPERED ROLLER BEARING: CRANKSHAFT L44649 (60038)	EA	1	2	*	2	2	*	2	2	20	20	C9	37
X2F 00145		CRANKSHAFT, COMPRESSOR B5 (11568)	EA	1	1									C9	38
P F 00146	3110-827-8648	CUP, TAPERED ROLLER BEARING: CRANKSHAFT L44610 (60038)	EA	1	2	*	2	2	*	2	2	20	20	C9	36
P F 00147	5330-291-2339	SEAL, PLAIN, ENCASED: OIL CRANKSHA FT 14812M1 (80201)	EA	1	1	*	*	2	*	*	2	10	10	C9	10
00148		5004 - PISTONS, CONNECTING RODS													
X2F 00149		PIN, PISTON: HIGH PRESSURE C21A (11568)	EA	1	1									C9	12

(1) SMR CODE	(2) FEDERAL STOCK NUMBER	(3) DESCRIPTION Reference Number & Mfr Code Usable On Code	(4) UNIT OF ISSUE	(5) QTY INC IN UNIT PACK	(6) QTY INC IN UNIT	(7) 30-DAY DS MAINT ALLOWANCE			(8) 30-DAY GS MAINT ALLOWANCE			(9) 1-YR ALW PER 100 EQUIP CNTGCT	(10) DEPOT MAINT ALW- PER 100 EQUIP	(11) ILLUS- TRATION	
						(a)	(b)	(c)	(a)	(b)	(c)			(a)	(b)
						1-20	21-50	51-100	1-20	21-50	51-100			FIG NO.	ITEM NO.
X2F 00150		PIN, PISTON LOW PRESSURE A21 (11568)	EA	1	2									C9	2
X2F 00151		PISTON, HIGH PRESSURE C4A (11568)	EA	1	1									C9	16
X2F 00152		PISTON, LOW PRESSURE A4A (11568)	EA	1	2									C9	6
X2F 00153		RETAINER, OIL SCOOP: CONNECTING ROD A24-4 (11568)	EA	1	3									C9	19
X2F 00154		RETAINER, PISTON PIN: HIGH PRESSURE PISTON B102 (11568)	EA	1	2									C9	11
X2F 00155		RETAINER, PISTON PIN: LOW PRESSURE PISTON A102 (11568)	EA	1	4									C9	1
P F 00156		RING SET, PISTON: HIGH PRESSURE PISTON ZC10 (11568)	EA	1	1	*	*	2	*	*	2	10	10		
X1 00157		RING, PISTON: BUTT JOINT COMPRESSION C10B (11568)	EA	1	1									C9	14
X1 00158		RING, PISTON: CHROME RAILS WITH EXPANDER C10D (11568)	EA	1	1									C9	15
X1 00159		RING, PISTON: STOP SEAL COMPRESSION C10A (11568)	EA	1	1									C9	13
P F 00160	4310-911-9566	RINK SET, PISTON: LOW PRESSURE PISTON ZA10 (115680)	EA	1	2	*	*	2	*	*	2	10	10		
X1 00161		RING, PISTON: BUTT JOINT COMPRESSION A10B (11568)	EA	1	2									C9	4
X1 00162		RING, PISTON: CHROME RAILS WITH EXPANDER A10D (11568)	EA	1	2									C9	5
X1 00163		RING, PISTON: STEP SEAL, COMPRESSION A10A (11568)	EA	1	2									C9	3
P F 00164	4310-911-2222	ROD, CONNECTING B3 (11568)	EA	1	3	2	2	3	2	2	3	30	30	C9	7

(1) SMR CODE	(2) FEDERAL STOCK NUMBER	(3) DESCRIPTION Reference Number & Mfr Code Usable On Code	(4) UNIT OF ISSUE	(5) QTY INC IN UNIT PACK	(6) QTY INC IN UNIT	(7) 30-DAY DS MAINT ALLOWANCE			(8) 30-DAY GS MAINT ALLOWANCE			(9) 1-YR ALW PER 100 EQUIP CNTGCTY	(10) DEPOT MAINT ALW- PER 100 EQUIP	(11) ILLUS- TRATION	
						(a)	(b)	(c)	(a)	(b)	(c)			(a)	(b)
						1-20	21-50	51-100	1-20	21-50	51-100			FIG NO.	ITEM NO.
X2F 00165		SCOOP, OIL: CONNECTING ROD A24-1 (11568)	EA	1	1									C9	25
X2F 00166		SCOOP, OIL; CONNECTING ROD A24-2 (11568)	EA	1	1									C9	21
X2F 00167		SCOOP, OIL: CONNECTING ROD A24-3 (11568)	EA	1	1									C9	18
F 00168		SCREW, CAP, HEXAGON HEAD: CONNECTING ROD 1/4-28 X 1 1/2 M780 (11568)	EA	1	6									C9	20
00169		5005 - VALVES													
X20 00170		CAP, VALVE CHAMBER: HIGH PRESSURE C28A (11568)	EA	1	2									C10	14
X20 00171		CAP, VALVE CHAMBER: LOW PRESSURE B28A (11568)	EA	1	2									C10	1
P O 00172	4310-900-2318	GASKET: VALVE CHAMBER CAP B75 (11568)	EA	1	4	*	*	2	*	*	2	10	20	C10	15
X20 00173		RETAINER, INTAKE VALVE B23 (11568)	EA	1	2									C10	2
X20 00174		RETAINER, VALVE B26A (11568)	EA	1	4									C10	16
P O 00175	410-911-6608	VALVE ASSEMBLY, EXHAUST Z122A (11568)	EA	1	3	2	2	3	2	2	3	30	30		
X1 00176		CAGE, EXHAUST VALVE U69A (11568)	EA	1	3									C10	17
X1 00177	4310-893-5124	DISC, COMPRESSOR VALVE U70A (11568)	EA	1	3									C10	5
P O 00178	4310-900-2317	GASKET: EXHAUST VALVE U48 (11568)	EA	1	6	*	*	2	*	*	2	10	30	C10	8
O 00179	5305-156-2357	SCREW, MACHINE: CAGE MTG, NO. 8-32 THD SIZE, 7/16 IN. LG U81 (11568)	EA	1	3									C10	3

(1) SMR CODE	(2) FEDERAL STOCK NUMBER	(3) DESCRIPTION Reference Number & Mfr Code Usable On Code	(4) UNIT OF ISSUE	(5) QTY INC IN UNIT PACK	(6) QTY INC IN UNIT	(7) 30-DAY DS MAINT ALLOWANCE			(8) 30-DAY GS MAINT ALLOWANCE			(9) 1-YR ALW PER 100 EQUIP CNTG	(10) DEPOT MAINT ALW- PER 100 EQUIP	(11) ILLUS- TRATION	
						(a)	(b)	(c)	(a)	(b)	(c)			(a)	(b)
						1-20	21-50	51-100	1-20	21-50	51-100			FIG NO.	ITEM NO.
X1 00180		SEAT, EXHAUST VALVE U68A (11568)	EA	1	3									C10	18
P O 00181	4310-893-5126	SPRING, COMPRESSOR VALVE U71 (11568)	EA	1	3	*	2	2	*	2	2	15	15	C10	6
P O 00182	4310-911-6607	VALVE ASSEMBLY, INTAKE: HIGH PRESSURE Z184 (79150)	EA	1	1	*	*	2	*	*	2	10	10		
X1 00183		CAGE, INTAKE VALVE U67A (11568)	EA	1	1									C10	7
X1 00184		DISC, COMPRESSOR VALVE U70A (11568)	EA	1	1									C10	5
P O 00185	4310-900-2317	GASKET: INTAKE VALVE U48 (11568) (INITIALLY LISTED AS INDEX NO. 00178)	EA											C10	8
O 00186	5305-156-2357	SCREW, MACHINE: INTAKE VALVE SEAT, NO. 8-32 THD SIZE, 7/16 IN. LG U81 (11568)	EA	1	1									C10	3
X1 00187		SEAT, INTAKE VALVE U66A (11568)	EA	1	1									C10	4
P O 00188	4310-893-5126	SPRING, COMPRESSOR VALVE U71 (11568) (INITIALLY LISTED AS INDEX NO. 00181)	EA											C10	6
P O 00189	4310-911-6609	VALVE ASSEMBLY, INTAKE: LOW PRESSURE Z121A (11568)	EA	1	2	*	2	2	*	2	2	20	20		
X1 00190		CAGE, INTAKE VALVE U67A (11568)	EA	1	2									C10	7
X1 00191	4310-893-5124	DISC, COMPRESSOR VALVE U70A (11568)	EA	1	2									C10	5
P O 00192	4310-900-2317	GASKET: INTAKE VALVE U48 (11568) (INITIALLY LISTED AS INDEX NO. 00178)	EA		6									C10	8

(1) SMR CODE	(2) FEDERAL STOCK NUMBER	(3) DESCRIPTION Reference Number & Mfr Code Usable On Code		(4) UNIT OF ISSUE	(5) QTY INC IN UNIT PACK	(6) QTY INC IN UNIT	(7) 30-DAY DS MAINT ALLOWANCE			(8) 30-DAY GS MAINT ALLOWANCE			(9) 1-YR ALW PER 100 EQUIP CNTGCTY	(10) DEPOT MAINT ALW- PER 100 EQUIP	(11) ILLUS- TRATION		
							(a)	(b)	(c)	(a)	(b)	(c)			(a)	(b)	
																	1-20
O 00193	5305-156-2357	SCREW, MACHINE: INTAKE VALVE SEAT, NO. 8-32 THD SIZE 7/16 IN. LG U81 (11568)		EA	1	2										C10	3
X1 00194		SEAT, INTAKE VALVE U66A (11568)		EA	1	2										C10	4
P O 00195	4310-893-5126	SPRING, COMPRESSOR VALVE U71 (11568) (INITIALLY LISTED AS INDEX NO. 00181)		EA		2										C10	6
00196		5006 - LUBRICATION SYSTEM															
O 00197	4730-018-4201	CAP, PIPE: OIL DRAIN, 3/8 IN. PIPE		EA	1	1										C9	27
X2F 00198		CHAMBER, BREATHER: CRANKCASE A100 (11568)		EA	1	1										C9	31
X20 00199		ELEMENT, CRANKCASE BREATHER A100-3 (11568)		EA	1	1										C9	29
X20 00200		GAGE, OIL LEVEL 0712-000017 (24981)		EA	1	1										C9	17
P F 00201	4310-900-2337	GASKET: CRANKCASE BREATHER C30 (11568)		EA	1	1	*	*	2	*	*	2	10	10		C9	32
X2F 00202		GASKET: HAND HOLE PLATE A33 (11568)		EA	1	1										C9	22
O 00203	4730-208-1218	NIPPLE, PIPE: OIL DRAIN, 3/8 IN. PIPE, 6 IN. LG		EA	1	1										C9	26
X2F 00204		PLATE: HAND HOLE A15 (11568)		EA	1	1										C9	23
O 00205	4730-278-3390	PLUG, PIPE: OIL FILL, 3/8 IN. M485 (11568)		EA	1	1										C9	39
F 00206	5305-639-8115	SCREW, CAP, HEXAGON HEAD: BREATHER MTG, 1/4-20 THD SIZE, 3/4 IN. LG M696 (11568)		EA	1	4										C9	30

(1) SMR CODE	(2) FEDERAL STOCK NUMBER	(3) DESCRIPTION Reference Number & Mfr Code	(4) UNIT OF ISSUE	(5) QTY INC IN UNIT PACK	(6) QTY INC IN UNIT	(7) 30-DAY DS MAINT ALLOWANCE			(8) 30-DAY GS MAINT ALLOWANCE			(9) 1-YR ALW PER 100 EQUIP CNTGCTY	(10) DEPOT MAINT ALW- PER 100 EQUIP	(11) ILLUS- TRATION	
						(a)	(b)	(c)	(a)	(b)	(c)			(a)	(b)
						1-20	21-50	51-100	1-20	21-50	51-100			FIG NO.	ITEM NO.
F 00207	5305-527-4486	SCREW, MACHINE: HAND HOLE PLATE, 1/4-20 THD SIZE, 3/8 IN. LG AN5150416-6 (11568)	EA	1	4									C9	24
00208		5007 - COMPRESSOR DRIVE													
P O 00209	3030-251-3941	BELTS, V, MATCHED SET 4L580-2 (81300) (2 BELTS PER SET)	EA	1	1	2	2	3	2	2	3	30	30	C8	1
X20 00210		FLYWHEEL: COMPRESSOR NR4-7AL (11568)	EA	1	1									C9	8
X20 00211		GUARD ASSEMBLY, BELT Z318 (11568)	EA	1	1										
X20 00212	4310-874-0350	BRACKET, BELT GUARD Z247-4 (11568)	EA	1	1									C11	11
X20 00213	4310-874-0350	BRACKET: BELT GUARD Z247-2 (11568)	EA	1	1									C11	6
X20 00214		BRACKET: BELT GUARD M809 (11568)	EA	1	1									C11	4
X20 00215	4310-837-1377	GUARD, BELT M501 (11568)	EA	1	1									C11	5
O 00216	5310-176-8114	NUT, PLAIN, HEXAGON: BRACKET, 5/16-18 THD SIZE AN340-516 (88041)	EA	1	3									C11	1
O 00217	5310-194-7307	WASHER, FLAT: BRACKET MTG, 5/16 IN. SCREW SIZE MS15795-12 (96906)	EA	1	3									C11	3
O 00218	5310-010-3320	WASHER, LOCK: BRACKET MTG, 5/16 IN. SCREW SIZE MS35338-7 (96906)	EA	1	3									C11	2
O 00219	5315-050-5795	KEY, MACHINE: FLYWHEEL MTG, 1/4 IN. SQ. 1 1/2 IN. LG 48 (11568)	EA	1	1									C9	28

(1) SMR CODE	(2) FEDERAL STOCK NUMBER	(3) DESCRIPTION Reference Number & Mfr Code Usable On Code	(4) UNIT OF ISSUE	(5) QTY INC IN UNIT	(6) QTY INC IN UNIT	(7) 30-DAY DS MAINT ALLOWANCE			(8) 30-DAY GS MAINT ALLOWANCE			(9) 1-YR ALW PER 100 EQUIP CNTG	(10) DEPOT MAINT ALW- PER 100 EQUIP	(11) ILLUS- TRATION	
						(a)	(b)	(c)	(a)	(b)	(c)			(a)	(b)
						1-20	21-50	51-100	1-20	21-50	51-100			FIG NO.	ITEM NO.
O 00220	5310-011-3739	NUT, PLAIN, HEXAGON; BELT GUARD MTG, 1/4-20 THD SIZE M907A (11568)	EA	1	1									C11	7
O 00221	5305-639-8115	SCREW," CAP, HEXAGON HEAD BELT GUARD MTG, 1/4-20 THD SIZE 3/4 IN. LG M696 (11568)	EA	1	2									C11	9
O 00222	5305-012-5843	SETSCREW: FLYWHEEL MTG, 3/8-16 THD SIZE, 3/8 IN. LG M568 (11568)	EA	1	1									C9	9
O 00223	5310-010-3339	WASHER, FLAT: BELT GUARD MTG, 1/4 IN. SCREW SIZE M905A (11568)	EA	1	2									C11	10
O 00224	5310-012-1753	WASHER, LOCK: BELT BRACKET MTG, 1/4 IN. SCREW SIZE M919A (11568)	EA	1	4									C11	8
00225		5008 - AIR INTAKE													
X20 00226		MUFFLER ASSEMBLY: COMPRESSOR INTAKE Z129C (1156)	EA	1	2									C10	
P O 00227	4310-911-6281	FILTER ELEMENT, INTAKE: FRONT B22A (11568)	EA	1	2	2	2	4	2	2	4	50	50	C10	12
P O 00228	4310-911-6282	FILTER ELEMENT, INTAKE: REAR B22B (11568)	EA	1	2	2	2	4	2	2	4	50	50	C10	11
X1 00229		BODY, INTAKE: AIR FILTER B57A (11568)	EA	1	2									C10	10
00230		5009 - UNLOADER SYSTEM COMPONENTS													
P O 00231	4310-870-5911	VALVE, HIGH PRESSURE: INTERSTAGE SAFETY Z67-75 (75336)	EA	1	1	*	*	2	*	*	2	10	10	C10	13

(1) SMR CODE	(2) FEDERAL STOCK NUMBER	(3) DESCRIPTION Reference Number & Mfr Code	(4) UNIT OF ISSUE	(5) QTY INC IN UNIT PACK	(6) QTY INC IN UNIT	(7) 30-DAY DS MAINT ALLOWANCE			(8) 30-DAY GS MAINT ALLOWANCE			(9) 1-YR ALW PER 100 EQUIP CNTGCTY	(10) DEPOT MAINT ALW- PER 100 EQUIP	(11) ILLUS- TRATION	
						(a)	(b)	(c)	(a)	(b)	(c)			(a)	(b)
						1-20	21-50	51-100	1-20	21-50	51-100			FIG NO.	ITEM NO.
P O 00232	4820-811-8636	VALVE, SAFETY RELIEF 206-200 (75336)	EA	1	1	*	*	2	*	*	2	10	10	C8	12
00233		5010 - COMPRESSOR COOLING													
X20 00234		AFTERCOOLER ASSEMBLY: COMPRESSOR A15 (11568)	EA	1	1									C10	23
O 00235	4730-050-4118	ELBOW PIPE TO TUBE: INTERCOOLER LINES, 1/2 IN. TUBE. 3/8 IN. PIPE, 90 DEGREE M515 (11568)	EA	1	4									C10	21
X20 00236		INTERCOOLER ASSEMBLY: COMPRESSOR A12 (11568)	EA	1	1									C10	30
O 00237	4730-237-1918	NUT TUBE COUPLING: INTERCOOLER COMPRESSION 1/2 IN. TUBE M594 (11568)	EA	1	4									C10	22
00238		5014 - AIR RECEIVER													
O 00239	4730-818-6896	ELBOW, PIPE: CHECK VALVE LINE, 1/2 IN. 90 DEGREE, STREET M982B (11568)	EA	1	1									C8	23
O 00241	4730-426-8352	ELBOW, PIPE TO TUBE: CHECK VALVE TO INTERCOOLER LINE 5/8 IN. TUBE, 1/2 IN. PIPE, 90 DEGREE M808 (11568)	EA	1	1									C8	26
O 00242	4730-042-9452	NIPPLE, PIPE. CHECK VALVE LINE, 1/2 IN. CLOSE M1027B (11568)	EA	1	2									C8	24
X1 00243		RECEIVER, AIR: 60 GALLON P2761B (11568)	EA	1	1									C8	22
O 00244	4730-287-0022	PLUG, PIPE: AIR RECEIVER, 1 1/2 IN. M569 (11568)	EA	1	2									C8	21
X20 00245		TUBE RELEASE VALVE 44-7 (11568)	EA	1	1									C8	11

(1) SMR CODE	(2) FEDERAL STOCK NUMBER	(3) DESCRIPTION Reference Number & Mfr Code	(4) UNIT OF ISSUE	(5) QTY INC IN UNIT PACK	(6) QTY INC IN UNIT	(7) 30-DAY DS MAINT ALLOWANCE			(8) 30-DAY GS MAINT ALLOWANCE			(9) 1-YR ALW PER 100 EQUIP CNTGCTY	(10) DEPOT MAINT ALW- PER 100 EQUIP	(11) ILLUS- TRATION	
						(a)	(b)	(c)	(a)	(b)	(c)			(a)	(b)
						1-20	21-50	51-100	1-20	21-50	51-100			FIG NO.	ITEM NO.
P O 00246	4310-532-7791	VALVE, CHECK COMPRESSOR Z220B (11568)	EA	1	1	*	*	2	*	*	2	10	10	C8	25
X1 00247		BODY : CHECK VALVE M449B (11568)	EA	1	1									C12	7
X1 00248		CAP: CHECK VALVE M450A (11568)	EA	1	1									C12	1
X1 00249		DISC: CHECK VALVE H41P (11568)	EA	1	1									C12	5
O 00250	5310-176-8142	NUT, PLAIN, HEXAGON: DISC MTG, BRA SS, 1/4-20 THD SIZE AN33584 (88044)	EA	1	1									C12	3
X1 00251		PLUNGER: CHECK VALVE M454 (11568)	EA	1	1									C12	4
O 00252	5305-290-3051	SCREW, MACHINE: DISC MTG, BRASS, 1/4-20 THD SIZE, 5/8 IN. LG AN515UB416-10 (88044)	EA	1	1									C12	6
P O 00253	4310-875-4108	SPRING: CHECK VALVE M453A (11568)	EA	1	1	2	2	3	2	2	3	30	30	C12	2
00254		5015 - AIR DISCHARGE SYSTEM													
O 00255	4730-202-6669	BUSHING, PIPE: VALVE TO AIR HOSE, 1/2 TO 1/4 IN. PIPE M554 (11568)	EA	1	1									C8	14
X20 00256	4310-874-3181	COCK, DRAIN: AIR RECEIVER M629 (11568)	EA	1	1									C8	20
O 00257	4730-092-9452	NIPPLE, PIPE: GLOBE VALVE TO TANK, 1/2 IN. CLOSE M10217B (11568)	EA	1	1									C8	16
P O 00258	4820-274-7389	VALVE, GLOBE: HOSE LINE 592-14 (86107)	EA	1	1	*	*	2	*	*	2	10	10	C8	15

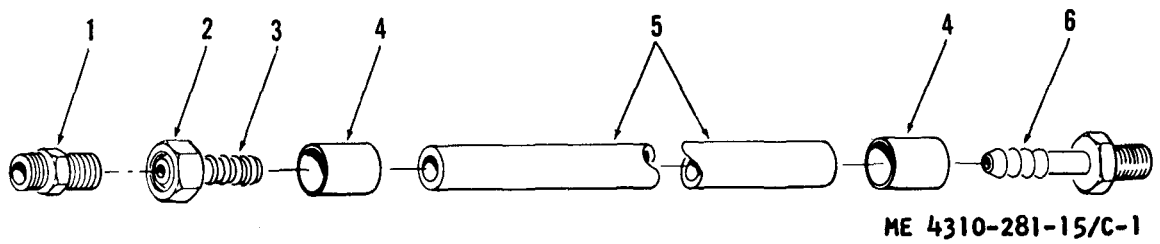
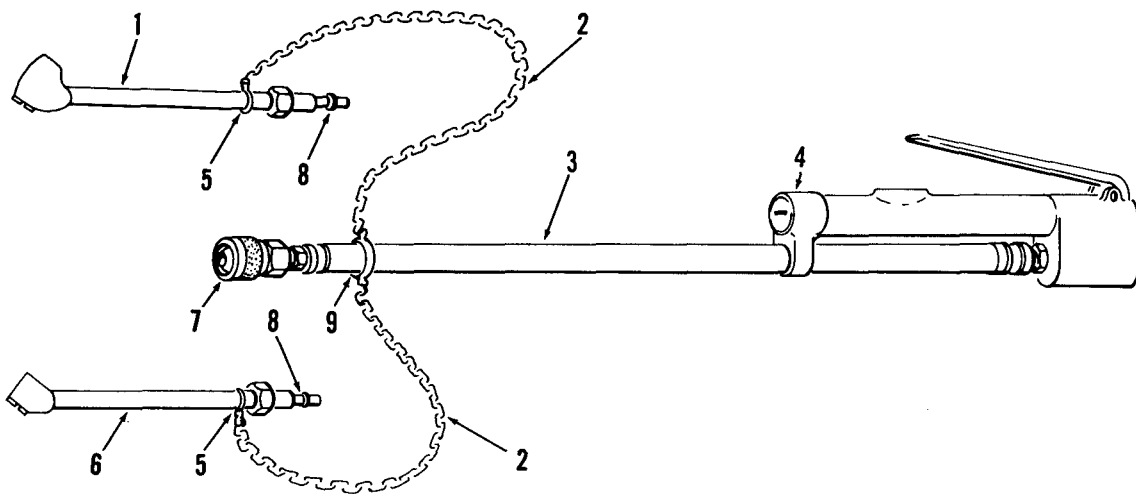


FIGURE NO. C-1 AIR HOSE

LEGEND TO PARTS, FIGURE C-1

ITEM NO.	FUNCT GROUP	ITEM NAME
1	2202	CÓUPLING
2	2202	NUT
3	2202	STEM
4	2202	FERRULE
5	2202	HOSE
6	2202	ADAPTER

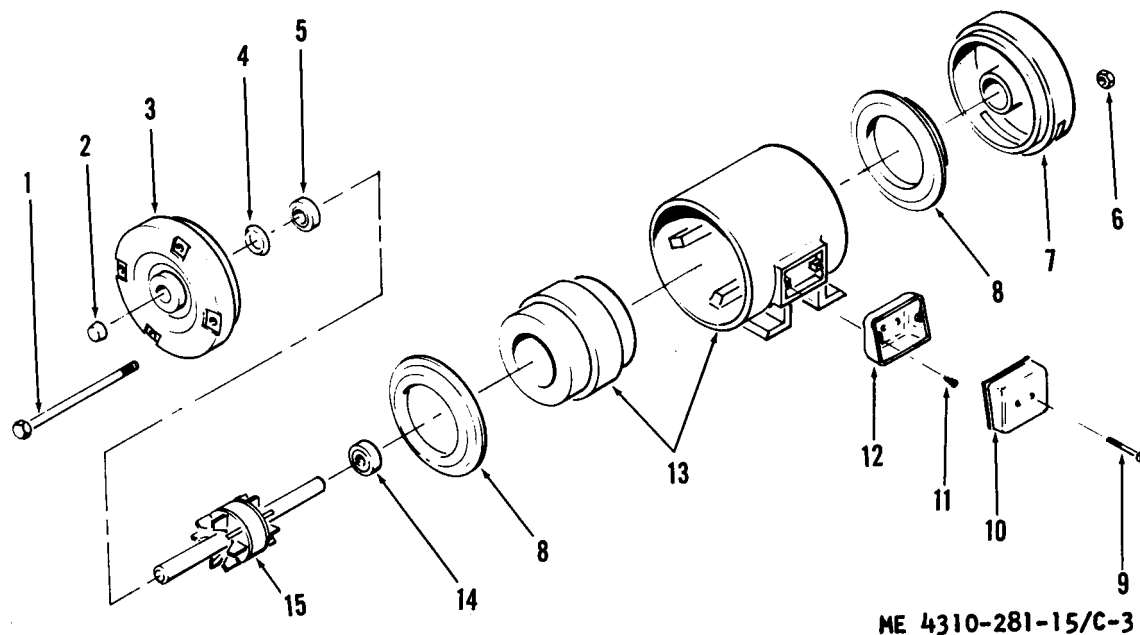


ME 4310-281-15/C-2

FIGURE NO. C-2 INFLATOR GAGE

LEGEND TO PARTS, FIGURE C-2

ITEM NO.	FUNCT GROUP	ITEM NAME
1	2202	PROBE
2	2202	CHAIN
3	2202	HOSE
4	2202	INFLATOR-GAGE
5	2202	KEY RING
6	2202	GAGE
7	2202	COUPLER
8	2202	PLUG
9	2202	KEY RING



ME 4310-281-15/C-3

FIGURE NO. C-3 ELECTRIC MOTOR (A)

LEGEND TO PARTS, FIGURE C-3

ITEM NO.	FUNCT GROUP	ITEM NAME	ITEM NO.	FUNCT GROUP	ITEM NAME
1	4005	BOLT	9	4014	SCREW
2	4005	CAP	10	4014	COVER
3	4005	END BELL	11	4014	SCREW
4	4005	WASHER	12	4014	BOX
5	4005	BEARING	13	4002	FRAME AY
6	4005	NUT	14	4005	BEARING
7	5005	END BELL	15	4001	ROTOR AY
8	4004	BAFFLE			

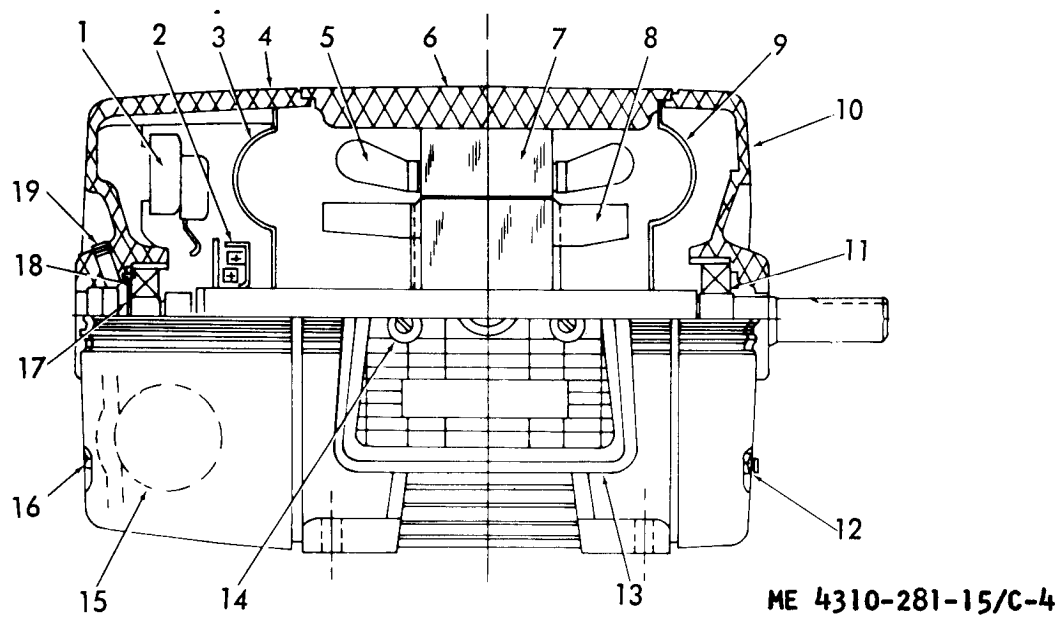
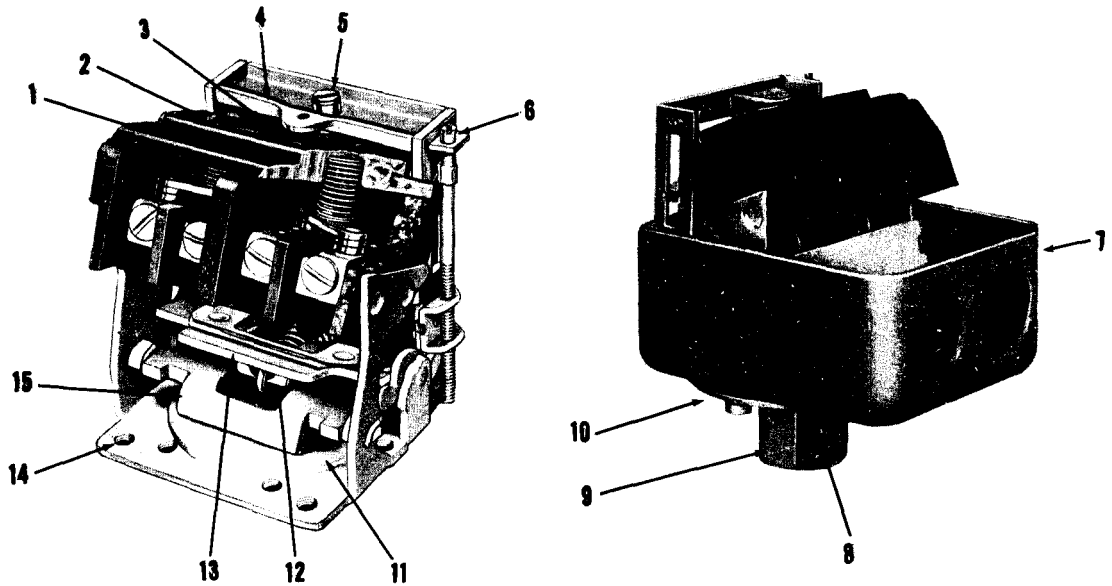


FIGURE NO. C-4 ELECTRIC MOTOR (B)

LEGEND TO PARTS, FIGURE C-4

ITEM NO.	FUNCT GROUP	ITEM NAME	ITEM NO.	FUNCT GROUP	ITEM NCEM
1	4006	SWITCH	11	4005	BEARING
2	4006	MECHANISM	12	4005	NUT
3	4004	BAFFLE	13	4014	BOX
4	4005	END BELL	14	4014	SCREW
5	4002	WINDING	15	4006	CAPACITOR
6	4002	FRAME	16	4005	BOLT
7	4002	CORE	17	4005	WASHER
8	4001	ROTOR AY	18	4005	BEARING
9	4004	BAFFLE	19	4005	PLUG
10	4005	END BELL			



ME 4310-281-15/C-5

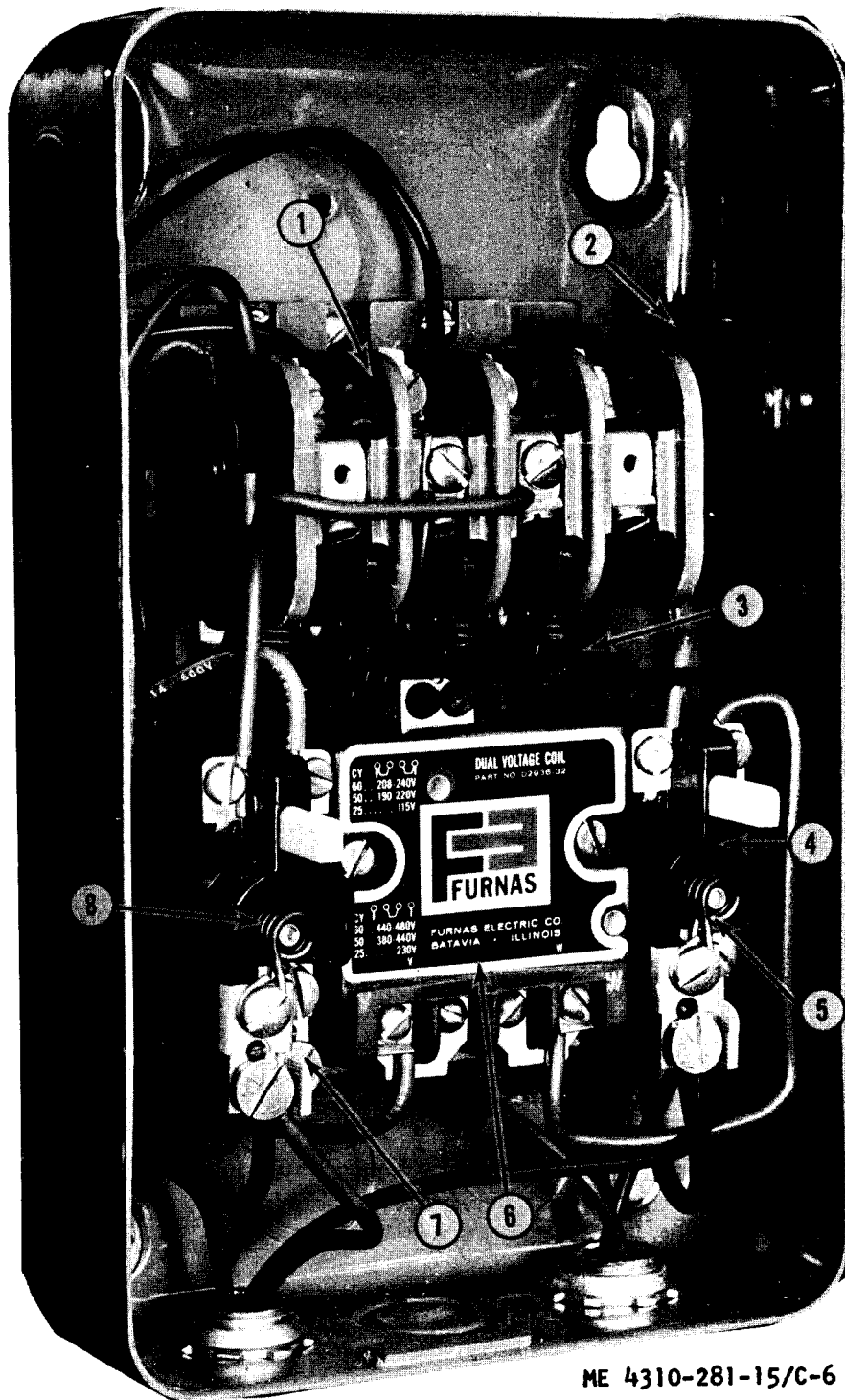
FIGURE NO. C-5 PRESSURE SWITCH

LEGEND TO PARTS, FIGURE C-5

ITEM NO.	FUNCT GROUP	ITEM NAME	ITEM NO.	FUNCT GROUP	ITEM NAME
1	4010	CONTACT BOARD	9	4010	DIAPHRAGM
2	4010	EQUALIZER	10	4010	DIAPHRAGM
3	4010	SPRING	11	4010	STIRRUP
4	4010	BAR	12	4010	SPRING
5	4010	SCREW	13	4010	TOGGLE BAR
6	4010	SCREW	14	4010	FRAME
7	4010	COVER	15	4010	LEVER
8	4010	SPRING			

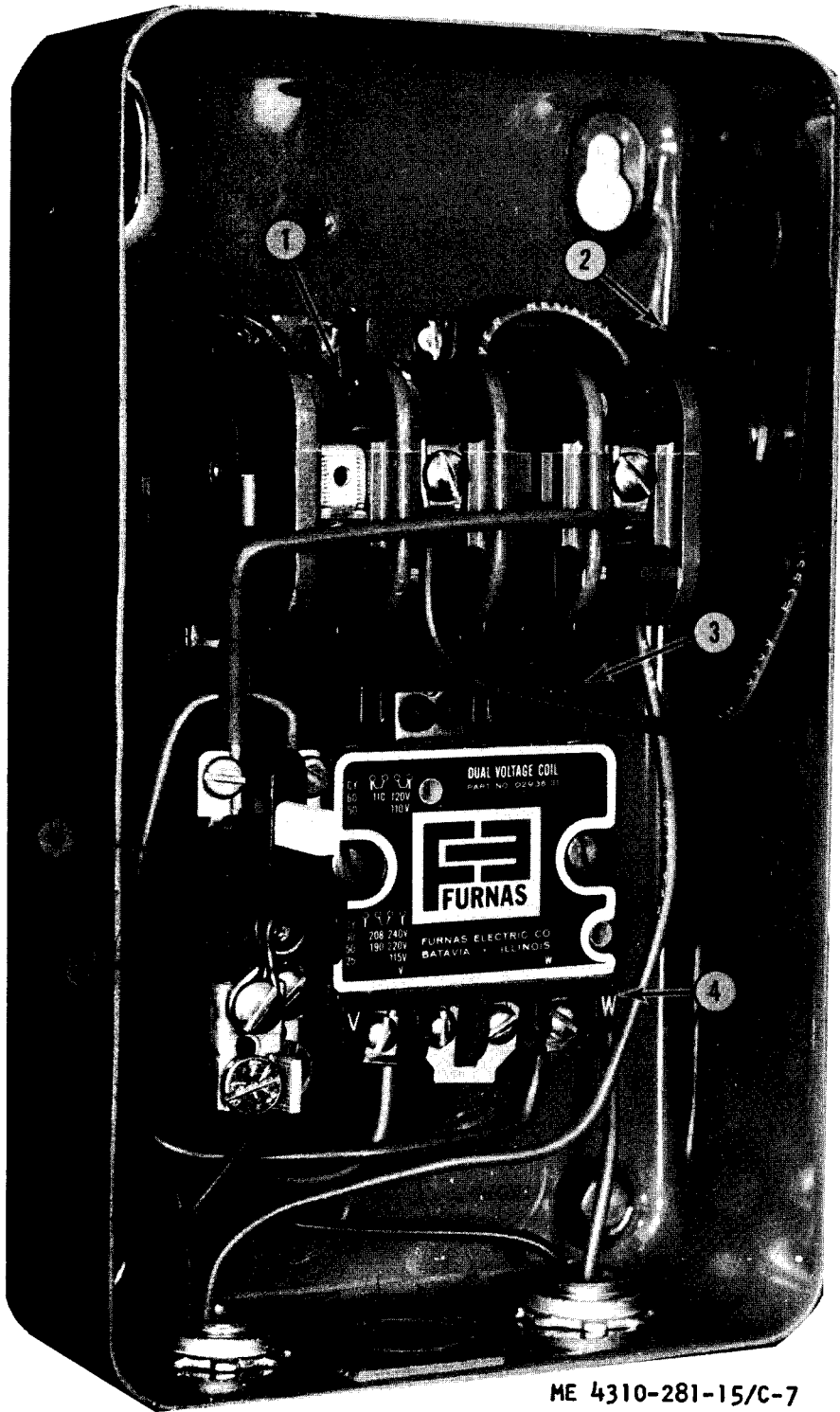
LEGEND TO PARTS, FIGURE C-6

ITEM NO.	FUNCT GROUP	ITEM NAME
1	4010	CONTACT BOARD
2	4012	SWITCH
3	4010	ARM AY
4	4010	RELAY
5	4010	HEATNG ELEMENT
6	4010	MAGNT-ARMATURE
7	4010	RELAY
8	4010	HEATER



ME 4310-281-15/C-6

FIGURE NO. C-6 MAGNETIC STARTER (A)



ME 4310-281-15/C-7

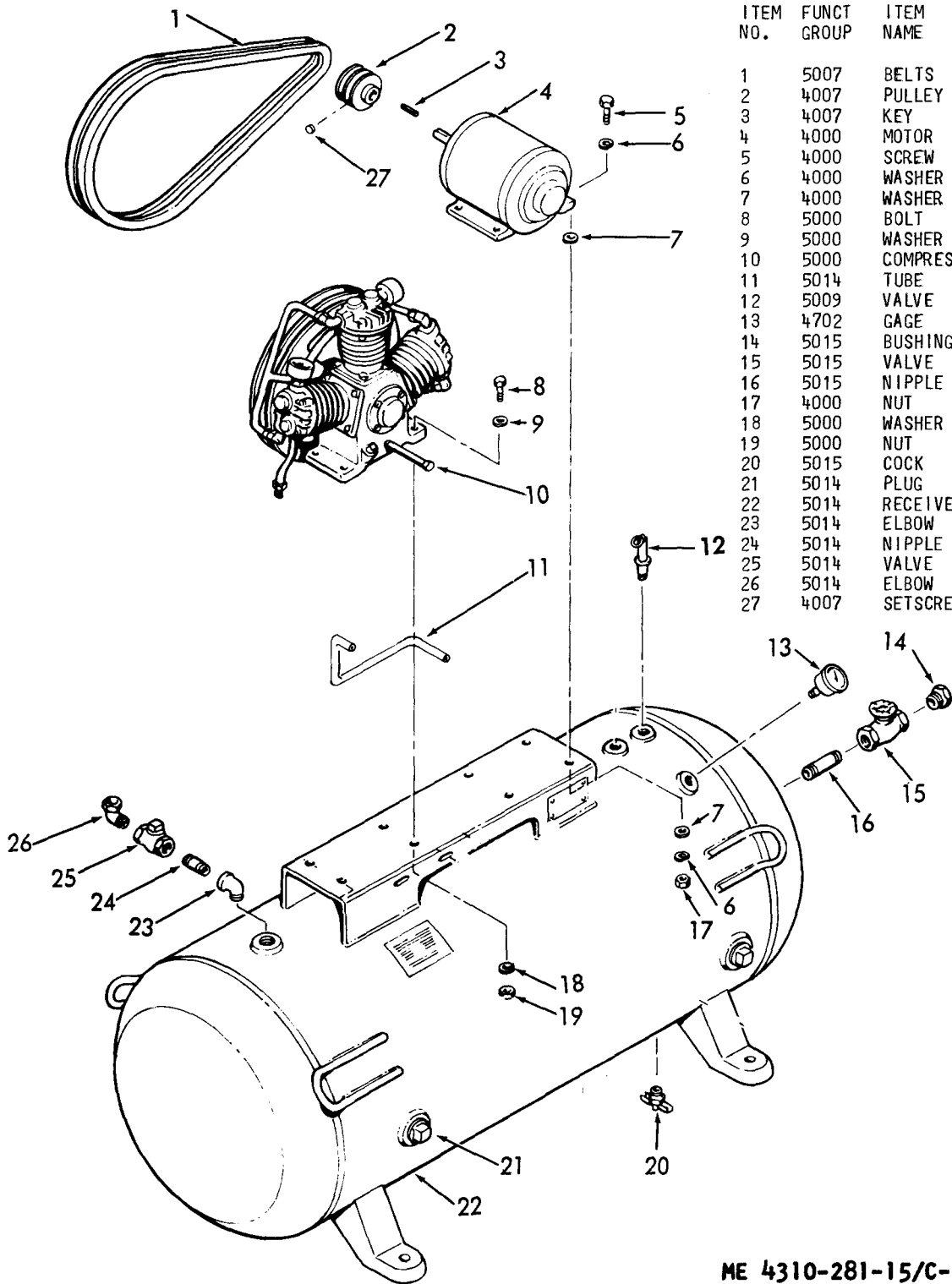
FIGURE NO. C-7 MAGNETIC STARTER (B)

LEGEND TO PARTS, FIGURE C-7

ITEM NO.	FUNCT GROUP	ITEM NAME
1	4010	CONTACT BOARD
2	4012	SWITCH
3	4010	ARM AY
4	4010	MAGNT-ARMATURE
5	4010	ELEMENT
6	4010	RELAY

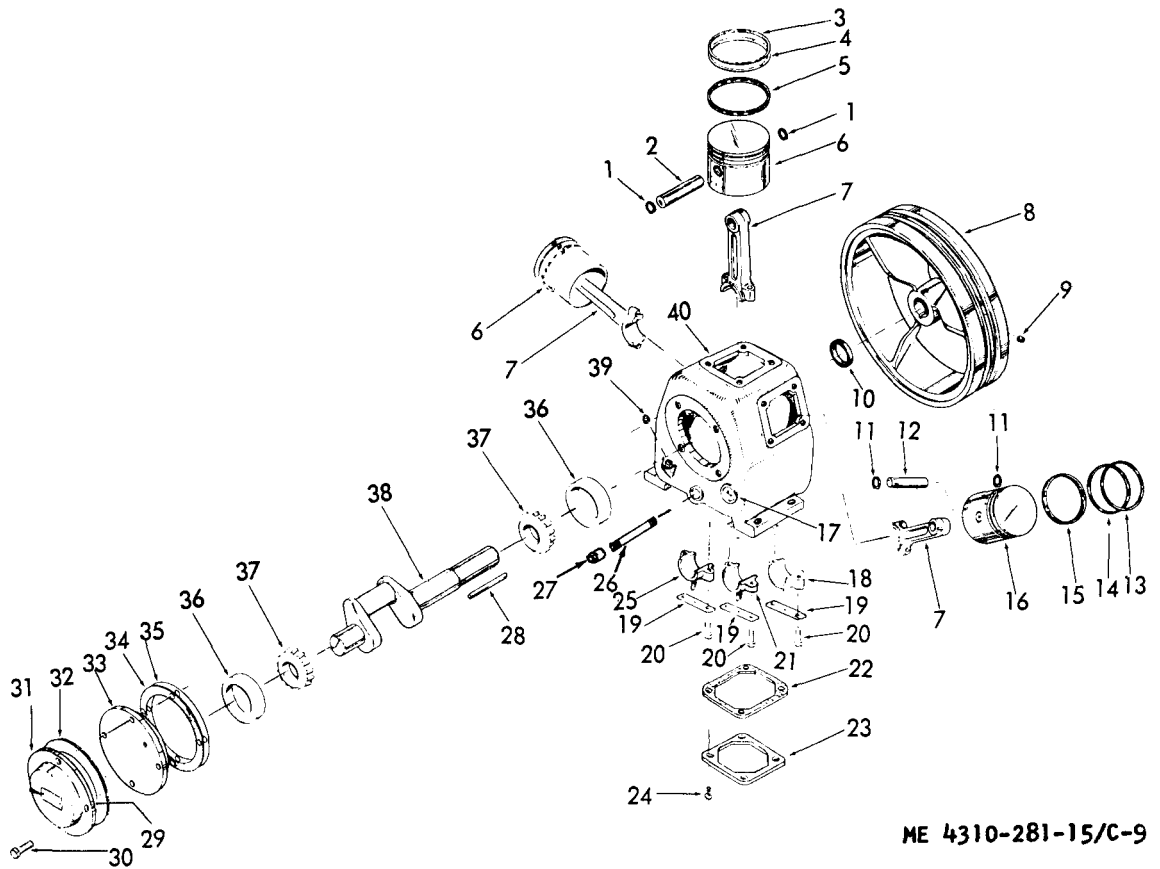
LEGEND TO PARTS, FIGURE C-8

ITEM NO.	FUNCT GROUP	ITEM NAME
1	5007	BELTS
2	4007	PULLEY
3	4007	KEY
4	4000	MOTOR
5	4000	SCREW
6	4000	WASHER
7	4000	WASHER
8	5000	BOLT
9	5000	WASHER
10	5000	COMPRESSOR AY
11	5014	TUBE
12	5009	VALVE
13	4702	GAGE
14	5015	BUSHING
15	5015	VALVE
16	5015	NIPPLE
17	4000	NUT
18	5000	WASHER
19	5000	NUT
20	5015	COCK
21	5014	PLUG
22	5014	RECEIVER
23	5014	ELBOW
24	5014	NIPPLE
25	5014	VALVE
26	5014	ELBOW
27	4007	SETSCREW



ME 4310-281-15/C-8

FIGURE NO. C-8 COMPRESSOR, MOTOR AND TANK



ME 4310-281-15/C-9

FIGURE NO. C-9 COMPRESSOR

LEGEND TO PARTS, FIGURE C-9

ITEM NO.	FUNCT GROUP	ITEM NAME	ITEM NO.	FUNCT GROUP	ITEM NAME	ITEM NO.	FUNCT GROUP	ITEM NAME
1	5004	RETAINER	15	5004	RING	28	5007	KEY
2	5004	PIN	16	5004	PISTON	29	5006	ELEMENT
3	5004	RING	17	5006	GAGE	30	5006	SCREW
4	5004	RING	18	5004	SCOOP	31	5006	CHAMBER
5	5004	RING	19	5004	RETAINER	32	5006	GASKET
6	5004	PISTON	20	5004	SCREW	33	5001	COVER
7	5004	ROD	21	5004	SCOOP	34	5001	GASKET
8	5007	FLYWHEEL	22	5006	GASKET	35	5001	GASKET
9	5007	SETSCREW	23	5006	PLATE	36	5002	CUP
10	5002	SEAL	24	5006	SCREW	37	5002	CONE-ROLLERS
11	5004	RETAINER	25	5004	SCOOP	38	5002	CRANKSHAFT
12	5004	PIN	26	5006	NIPPLE	39	5006	PLUG
13	5004	RING	27	5006	CAP	40	5001	CRANKCASE
14	5004	RING						

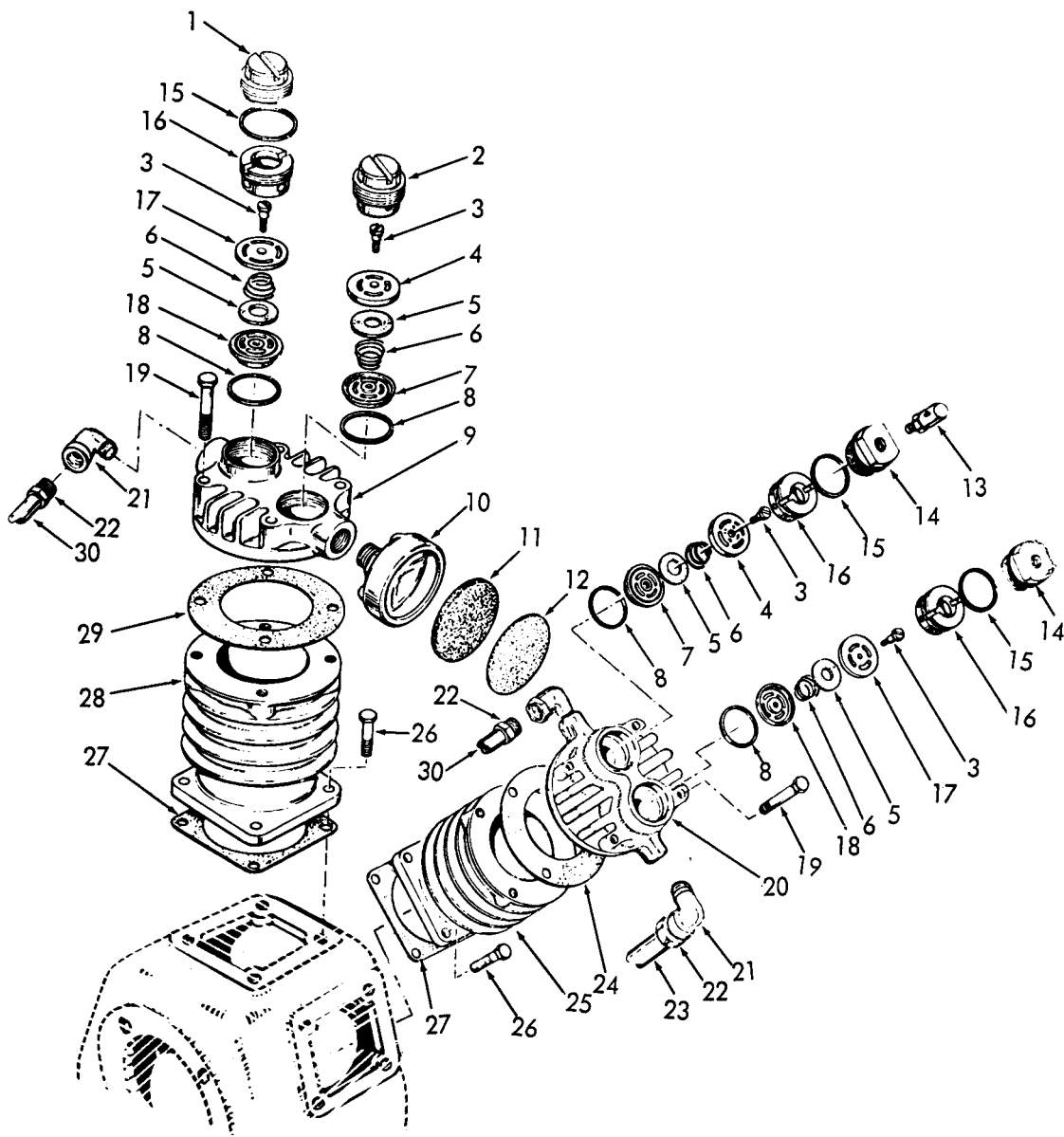
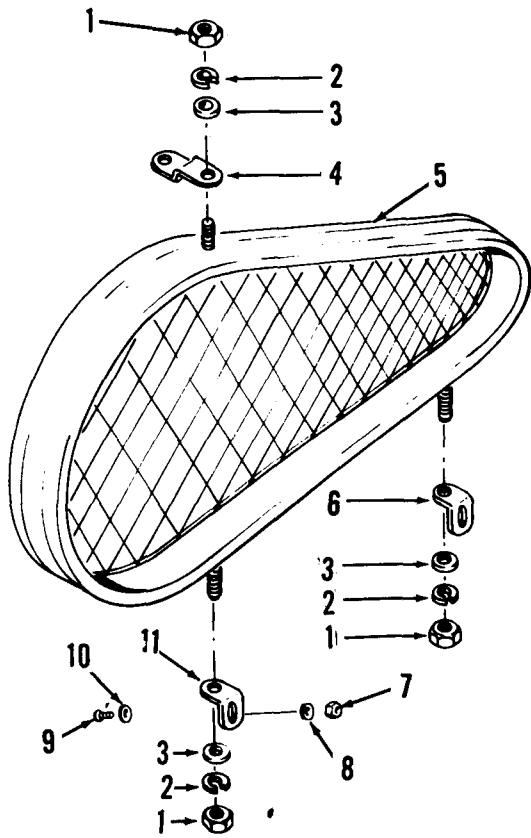


FIGURE No. C-10 COMPRESSOR VALVES

ME 4310-281-15/C-10

LEGEND TO PARTS, FIGURE C-10

ITEM NO.	FUNCT GROUP	ITEM NAME	ITEM NO.	FUNCT GROUP	ITEM NAME	ITEM NO.	FUNCT GROUP	ITEM NAME
1	5005	CAP	11	5008	FILTER ELEMENT	21	5010	ELBOW
2	5005	RETAINER	12	5008	FILTER ELEMENT	22	5010	NUT
3	5005	SCREW	13	5009	VALVE	23	5010	AFTERCOOLER AY
4	5005	SEAT	14	5005	CAP	24	5001	GASKET
5	5005	DISC	15	5005	GASKET	25	5001	CYLINDER
6	5005	SPRING	16	5005	RETAINER	26	5001	BOLT
7	5005	CAGE	17	5005	CAGE	27	5001	GASKET
8	5005	GASKET	18	5005	SEAT	28	5001	CYLINDER
9	5001	HEAD	19	5001	BOLT	29	5001	GASKET
10	5008	BODY	20	5001	HEAD	30	5010	INTERCOOLER AY

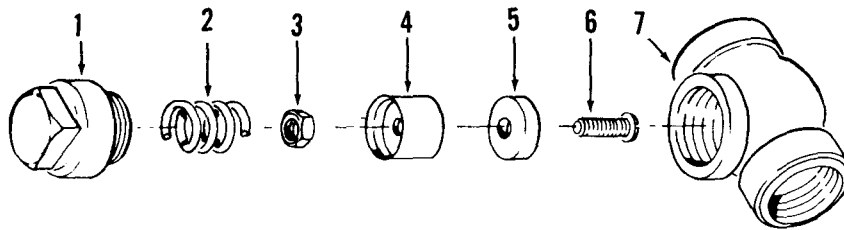


ME 4310-281-15/C-11

FIGURE No. C-11 BELT GUARD

LEGEND TO PARTS, FIGURE C-11

ITEM NO.	FUNCT GROUP	ITEM NAME	ITEM NO.	FUNCT GROUP	ITEM NAME
1	5007	NUT	7	5007	NUT
2	5007	WASHER	8	5007	WASHER
3	5007	WASHER	9	5007	SCREW
4	5007	BRACKET	10	5007	WASHER
5	5007	GUARD	11	5007	BRACKET
6	5007	BRACKET			



ME 4310-281-15/C-12

FIGURE No. C-12 CHECK VALVE

LEGEND TO PARTS, FIGURE C-12

ITEM NO.	FUNCT GROUP	ITEM NAME
1	5014	CAP
2	5014	SPRING
3	5014	NUT
4	5014	PLUNGER
5	5014	DISC
6	5014	SCREW
7	5014	BODY

**Section VII. INDEX-FEDERAL STOCK NUMBER AND REFERENCE NUMBER
CROSS-REFERENCE TO INDEX NUMBER**

<u>REFERENCE No.</u>	<u>MFG CODE</u>	<u>INDEX No.</u>		<u>MFG CODE</u>	<u>INDEX No.</u>
AN335B4	88044	00250	MS15795-12	96906	00217
AN340-516	88044	00216	M535336-7	96906	00218
AN519C416-0	11568	00207	M10278	11568	00242
AN519UB416-10	88044	00252			00257
AN535-2-4	11568	00023	M3413	72219	00016
A10A	11568	00163	M4498	11568	00247
A10B	11568	00161	M450A	11568	00248
A10U	11568	00162	M453A	11568	00253
A100	11568	00198	M454	11568	00251
A100-3	11568	00199	M456	11568	00029
A102	11568	00155	M457	11568	00129
A12	11568	00236	M485	11568	00205
A15	11568	00204	M498	11568	00068
A21	11568	00150	M501	11568	00215
A24-1	11568	00165	M515	11568	00235
A24-2	11568	00166	M5196	11568	00120
A24-3	11568	00167	M554	11568	00255
A24-4	11568	00153	M568	11568	00069
A29	11568	00138			00222
A33	11568	00202	M569	11568	00244
A4A	11568	00152	M594	11568	00237
A45	11568	00234	M629	11568	00256
A6A	11568	00134	M696	11568	00076
B1A	11568	00142			00206
B102	11568	00154			00221
B22A	11568	00227	M739	11568	00022
B22B	11568	00228	M780	11568	00168
B23	11568	00173	M808	11568	00241
B26A	11568	00174	M809	11568	00214
B28A	11568	00171	M905A	11568	00104
B3	11568	00164			00223
B31	11568	00140	M907A	11568	00075
B5	11568	00145			00220
B57A	11568	00229	M909A	11568	00028
B75	11568	00172	M911A	11568	00127
B9	11568	00132	M917H	11568	00031
CAW	11568	00124	M919A	11568	00105
C1	11568	00141			00224
C10A	11568	00159	M935A	11568	00125
C10B	11568	00157	M982B	11568	00239
C10U	11568	00158	NR4-TAL	11568	00210
C14B	11568	00131	P2761B	11568	00243
C1439	72219	00019	SE5-88	11568	00030
C21A	11568	00149	T8	11568	00067
C28A	11568	00170	U48	11568	00178
C30	11568	00137			00185
		00201			00192
C31	11568	00139	U66A	11568	00187
C4A	11568	00151			00194
C6B	11568	00133	U67A	11568	00183
DU	53477	00017			00190
D10037-1	23826	00102	U68A	11568	00180
D10456-1	23826	00100	U69A	11568	00176
D1360	23826	00096	U70A	11568	00177
D16577-1	23826	00080			00184
		00086			00191
D1673-1	23826	00090	U71	11568	00181
D274-1	23826	00093			00188
D276-1	23826	00094			00195
D317-2	23826	00103	U81	11568	00179
D323-1	23826	00098			00186
D357-1	23826	00101			00193
D467-1	23826	00099	ZA10	11568	00160
D50912-13	23826	00079	ZC10	11568	00156
		00085	Z121A	11568	00189
D50937-10	23826	00078	Z122A	11568	00175
		00084	Z129C	11568	00226
D7878-1	23826	00092	Z184	79150	00182
D9078-1	23826	00095	Z220B	11568	00246
D9096-1	23826	00097	Z247-2	11568	00213
D9935-1	23826	00089	Z247-4	11568	00212
D9943-10	23826	00091	Z318	11568	00211
G1500	81348	00003	Z538	11568	00014
H01	23826	00088	Z67-75	75336	00231
H24	23826	00073	0712-000017	24981	00200
H30	23826	00072	103022-105	23452	00055
H35	23826	00074			00056
H41P	11568	00249	103023-101	23452	00038
H43	23826	00071	103031-104	23452	00053
J2807	72219	00020	103056-106	23452	00054
L44610	60038	00146	104026-104	23452	00035
L44649	60038	00144	105501-914	23452	00039

Section V I I. INDEX-FEDERAL STOCK NUMBER AND REFERENCE NUMBER
CROSS-REFERENCE TO INDEX NUMBER

<u>REFERENCE No.</u>	<u>MFG CODE</u>	<u>INDEX No.</u>
108339-814	23452	00034
108550-902	23452	00033
110000-101	23452	00042
		00043
110002-103	23452	00060
		00061
110004-101	23452	00059
110034-902	23452	00064
110043-101	23452	00112
		00113
110076-101	23452	00044
110202-901	23452	00110
		00111
110204-101	23452	00050
110204-108	23452	00051
110209-901	23452	00065
110229-106	23452	00114
		00115
11613	78394	00018
14CA32BCX26	23826	00077
14DA12BAX26	23826	00083
141430-901	23452	00037
147430-100	23452	00040
14812M1	80201	00147
1506	94894	00006
1507	94894	00004
1508	94894	00010
1509	94894	00011
20A25-73	73559	00107
		00108
2HP184FR	23452	00026
206-200	75336	00232
275092-104	23452	00046
		00047
275095-101	23452	00048
275095-105	23452	00049
275150-518	23452	00116
		00117
275462	23452	00063
275514-110	23452	00057
		00058
292068-101	23452	00052
30A	11568	00135
4L580-2	81300	00209
4100121101	23452	00027
44-7	11568	00245
48	11568	00219
480b11A	23826	00081
		00087
480b12A	23826	00082
5004	94894	00012
506	94894	00009
506-32	94894	00008
592-14	86107	00258
61F1-71S	94894	00005
6362	53477	00015
729	94894	00007
		00013

Section VII. INDEX- FEDERAL STOCK NUMBER AND REFERENCE NUMBER
CROSSREFERENCE TO INDEX NUMBER

<u>STOCK NUMBER</u>	<u>INDEX NUMBER</u>	<u>STOCK NUMBER</u>	<u>INDEX NUMBER</u>
3020-837-1270	00068	5310-011-3739	00075
3030-251-3941	00209		00220
		5310-011-4604	00105
3110-827-8648	00146	5310-012-0375	00057
3110-840-5983	00048		00058
3110-926-1379	00144	5310-012-0376	00125
3110-937-3853	00046	5310-012-1753	00224
	00047	5310-018-7076	00030
4310-019-4189	00073	5310-176-8141	00216
4310-378-9681	00072	5310-176-8142	00250
4310-532-7791	00246	5310-144-7307	00217
4310-837-1377	00215	5310-514-6674	00127
4310-870-5411	00231		
4310-873-1767	00014	5310-638-3899	00028
4310-874-0350	00212	5315-050-5795	00219
	UU213	5315-526-9637	00067
4310-874-3181	00256	5330-241-2339	00147
4310-875-4108	00253	5340-805-0825	00102
4310-893-5124	00177	5330-241-8921	00107
	00191		00108
4310-893-5126	00181	5330-501-0059	00088
	00188	5330-530-4936	00099
	00195	5330-756-9452	00101
	00178	5330-772-6081	00092
4310-900-2317	00185	5345-910-4717	00081
	00192		00087
4310-900-2318	00172	6105-849-2300	00026
4310-900-2328	00138	6110-802-6784	00074
4310-900-2337	00201	6110-820-0708	00094
4310-900-2339	00135	6110-887-5001	00100
4310-900-2340	00136	6110-887-5005	00103
4310-901-0359	00140	6110-891-0905	00077
4310-911-2222	00164	6685-425-2873	00120
4310-911-6281	00227	6685-910-8359	00006
4310-911-6282	00228		
4310-911-6607	00182		
4310-911-6608	00175		
4310-911-6609	00189		
4310-911-9566	00160		
4310-911-9571	00196		
4310-994-8886	00071		
4730-018-4201	uu197		
4730-042-4452	UU242		
4730-050-4118	U0235		
4730-092-4452	00257		
4730-202-6669	00255		
4730-208-1218	00203		
4730-237-1918	UU237		
4730-278-3390	00205		
4730-287-0022	uo244		
4730-426-8352	00241		
4730-595-1721	00015		
4730-818-6896	00239		
4820-274-7389	00258		
4820-844-8636	00232		
4910-030-2365	00003		
4910-806-8185	00009		
5305-010-2728	00069		
5305-012-5843	00222		
5305-071-2091	00116		
	00117		
5305-156-2357	00179		
	00186		
	00193		
5305-186-7448	00029		
5305-253-5612	U0023		
5305-290-3051	00252		
5305-527-4486	00207		
5305-639-8115	00076		
	00206		
	00221		
5305-808-3109	00098		
5305-988-1723	00114		
	00115		
5306-206-5613	00129		
5306-298-4781	00123		
5306-638-1459	00130		
5310-010-3320	00218		
5310-010-3321	00031		
5310-010-3331	00126		
5310-010-3339	00104		
	00223		

By Order of the Secretary of the Army:

Official:

KENNETH G. WICKHAM,
Major General, United States Army,
The Adjutant General.

W. C. Westmoreland,
General, United States Army,
Chief of Staff.

DISTRIBUTION:

To be distributed in accordance with DA Form 12-25, Sec I (qty rqr
Block #6) requirements for Organizational maintenance, Air Compressor: 5 CFM.

TM 5-4310-281-15

COMPRESSOR, RECIPROCATING, AIR, RECEIVER MOUNTED—1968